

INDUSTRIAL HARDWARE

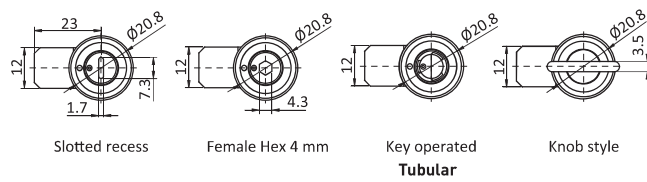
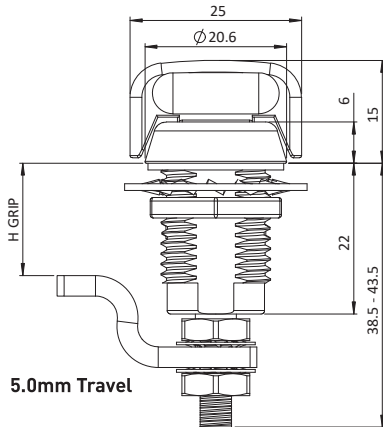
CHAPTER 2: **COMPRESSION LATCHES**



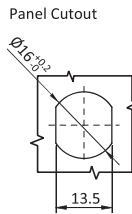
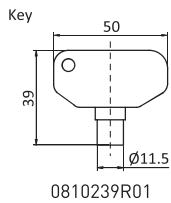
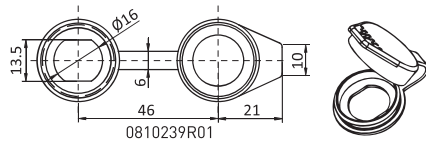
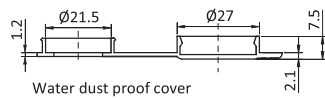
SMALL COMPRESSION LATCHES	50
LARGE COMPRESSION LATCHES	51-54
T-HANDLE COMPRESSION LATCHES - SHORT SHAFT	54
LARGE COMPRESSION LATCHES	55
T-HANDLE COMPRESSION LATCHES - LONG SHAFT	56
WINGKNOB COMPRESSION LATCHES	56
SQUARE FACE COMPRESSION LATCHES	57-58
HANDLE COMPRESSION LATCHES	59-62
T-HANDLE COMPRESSION LATCHES	63
HANDLE COMPRESSION LATCHES	64-65
TRIGGER LATCHES	66-67
OVER-CENTER DRAW LATCHES	68-70
DRAW LATCHES	71
OVER-CENTER DRAW LATCHES	72

SMALL COMPRESSION LATCHES

DESCRIPTION	For easy, secure, and compressive latching and locking of doors and flaps.
MATERIAL	Housing and cylinder: Die-cast zinc Cam: Mild steel
SURFACE	Housing and cylinder: Black powder coated Cam: Zinc plated
SPECIALS	Right and left IP65 / NEMA 4



Optional Components:

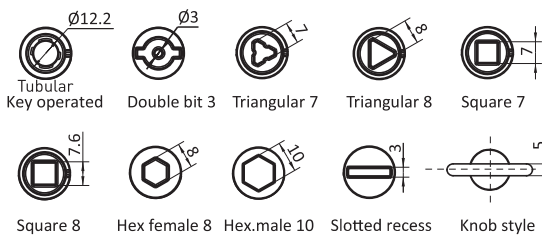
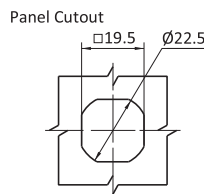
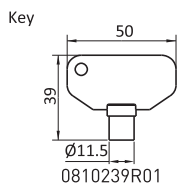
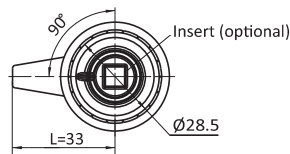
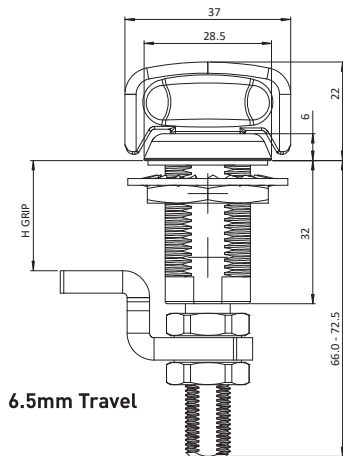


Cylinder Style	H Grip Range [mm]							
	3.2 - 6.4 mm	6.4 - 9.5 mm	9.5 - 12.7 mm	12.7 - 15.9 mm	15.9 - 19.0 mm	19.0 - 22.2 mm	22.2 - 25.4 mm	25.4 - 28.6 mm
Slotted Recess	0810203	0810204	0810205	0810206	0810207	0810208	0810209	0810210
Female Hex 4mm	0810211	0810212	0810213	0810214	0810215	0810216	0810217	0810218
Knob Style	0810219	0810220	0810221	0810222	0810223	0810224	0810225	0810226
Tubular Key	0810227	0810228	0810229	0810230	0810231	0810232	0810233	0810234

Chapter 5 and 9 for accessories

LARGE COMPRESSION LATCHES

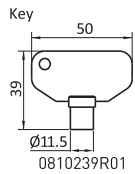
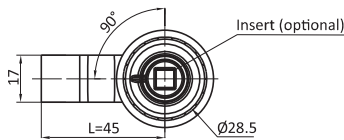
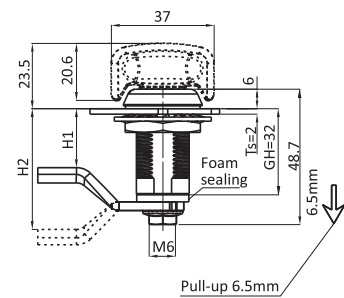
DESCRIPTION	For easy, secure, and compressive latching and locking of doors and flaps.
MATERIAL	Housing and cylinder: Die-cast zinc Cam: Mild steel
SURFACE	Housing and cylinder: Black powder coated Cam: Zinc plated
SPECIALS	Right and left IP65 / NEMA 4



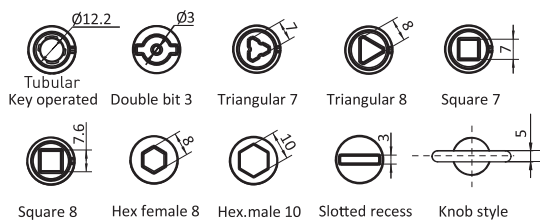
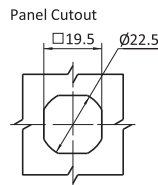
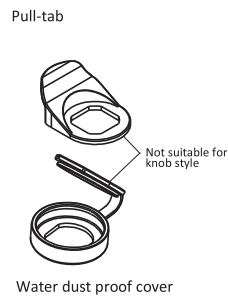
Cam Style	H Grip Range [mm]	Tubular Key Operated	Double Bit 3mm	Triangular 7mm	Triangular 8mm	Square 7mm	Square 8mm	Slotted Recess	Hex Female 8mm	Hex Male 10mm	Knob Style
Reversed	11.4 - 27.2	0810237	0810240	0810243	0810355	0810358	0811039	0810361	0810364	0810367	0810370
	25.4 - 41.1	0810238	0810241	0810244	0810356	0810359	0811040	0810362	0810365	0810368	0810371
Straight	38.9 - 54.6	0810239	0810242	0810245	0810357	0810360	0811041	0810363	0810366	0810369	0810372
Offset	52.6 - 68.3	0810238	0810241	0810244	0810356	0810359	0811040	0810362	0810365	0810368	0810371
	66.3 - 76.2	0810237	0810240	0810243	0810355	0810358	0811039	0810361	0810364	0810367	0810370

LARGE COMPRESSION LATCHES

DESCRIPTION	For easy, secure, and compressive latching and locking of doors and flaps.
MATERIAL	Housing and cylinder: Die-cast zinc Cam: mild steel
SURFACE	Housing and cylinder: Black powder coated Cam: zinc plated
SPECIALS	Right and left



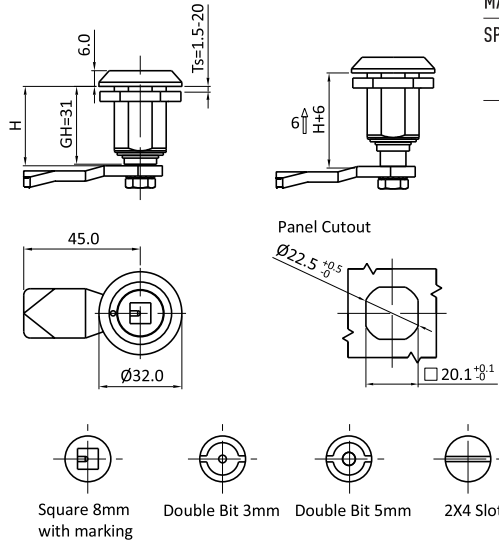
Optional components:



Large Compression Latches	Cylinder Style	Part #
	Tubular Key	0810488
	Double Bit w. 4mm Pin	0810489
	Triangle 7 mm	0810490
	Triangle 8 mm	0810491
	Square 7 mm	0810492
	Square 8 mm	0810493
	Slotted Recess	0810494
	Female Hex 8 mm	0810495
	Male Hex 10 mm	0810496
	Knob Style	0810497

Compatible cams see pages 47, 211-219
 Chapter 5 and 9 for accessories

LARGE COMPRESSION LATCHES



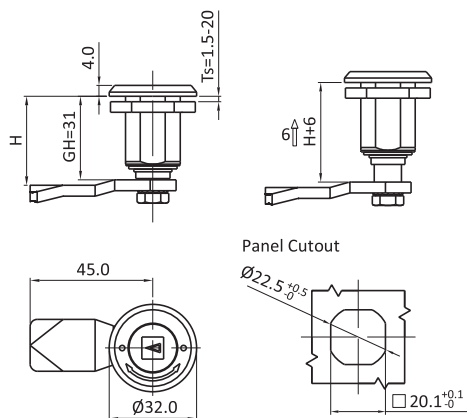
DESCRIPTION	For easy, secure, and compressive latching and locking of doors and flaps.
MATERIAL	316 SS
SPECIALS	Right and Left IP65 / NEMA 4 Spring and Seal



Large Compression Latches	Cylinder Style	Part #
	Square 8mm	0813126
	Double bit 3mm	0813128
	Double bit 5mm	0813129
	Slot 2 x 4 mm	0813127

Compatible cams see pages 47, 211-219
 Chapter 5 and 9 for accessories

LARGE COMPRESSION LATCHES



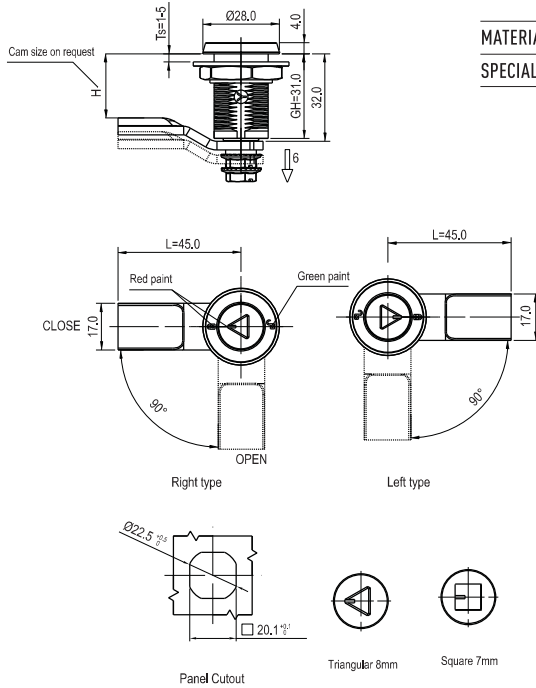
DESCRIPTION	For easy, secure, and compressive latching and locking of doors and flaps.
MATERIAL	316 SS
SPECIALS	Right and Left IP65 / NEMA 4 Spring and Seal Arrowhead and red-green marking



Large Compression Latches	Cylinder Style	Left	Right
	Square 8mm	0813130	0813131

Compatible cams see pages 47, 211-219
 Chapter 5 and 9 for accessories

LARGE COMPRESSION LATCHES



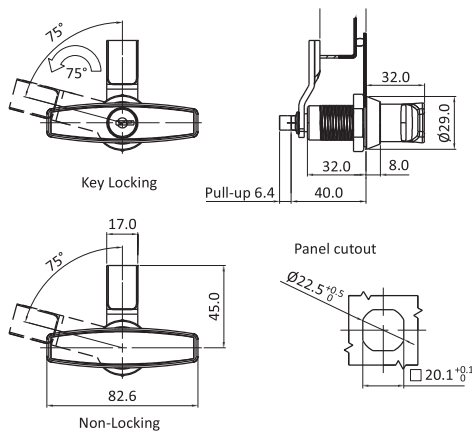
DESCRIPTION	For easy, secure, and compressive latching and locking of doors and flaps.
MATERIAL	316 SS
SPECIALS	Right and Left



Large Compression Latches	Cylinder Style	Left	Right
	Triangular 8mm	0813060	0813061
	Square 7mm	0813058	0813059

Compatible cams see pages 47, 211-219
 Chapter 5 and 9 for accessories

T-HANDLE COMPRESSION LATCHES - SHORT SHAFT



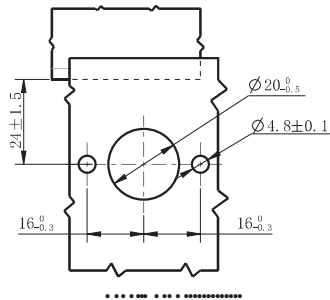
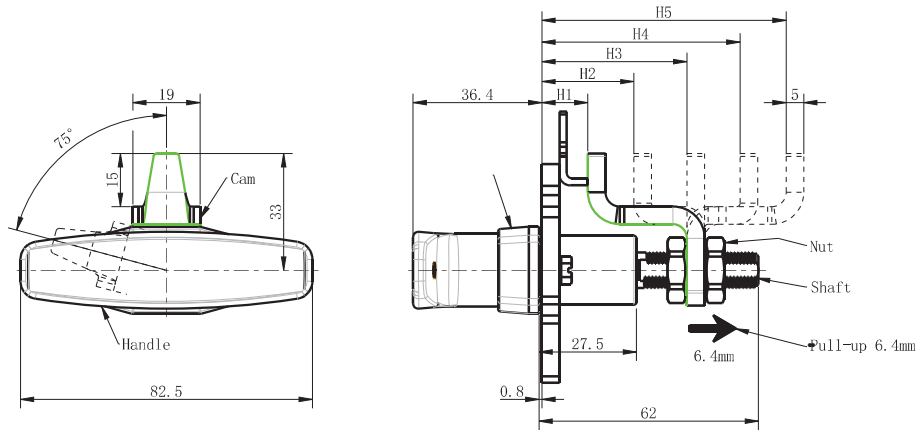
DESCRIPTION	For easy, secure, and compressive latching and locking of doors and flaps.
MATERIAL	Handle and Housing: Die cast zinc Shaft: Mild steel
SURFACE	Handle and Housing: Black powder coated Shaft: Zinc plated



T-Handle Compression Latches - Short Shaft	FH751 Key locking	Non-locking
	0850142	0850143

LARGE COMPRESSION LATCHES

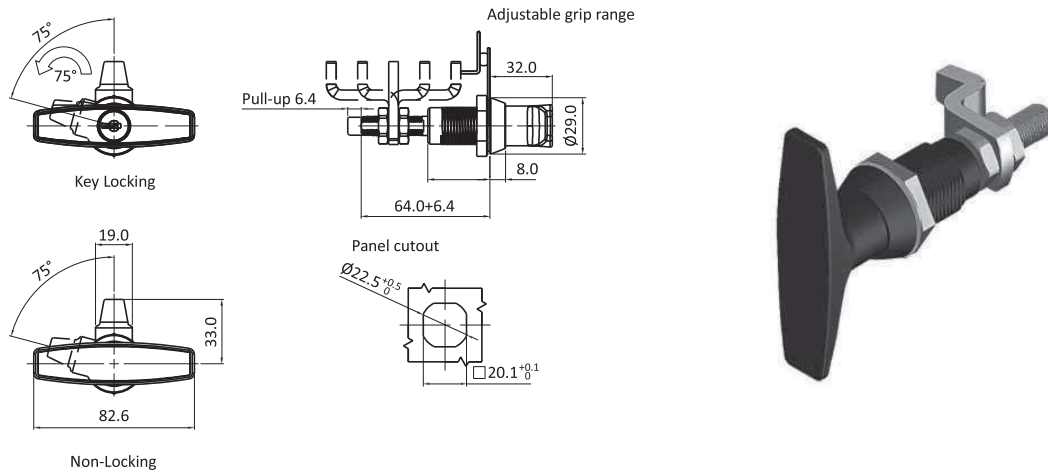
DESCRIPTION	For easy, secure, and compressive latching and locking of doors and flaps.
MATERIAL	Handle and Housing: Die cast zinc Shaft: Mild steel
SURFACE	Handle and Housing: Black powder coated Shaft: Zinc plated



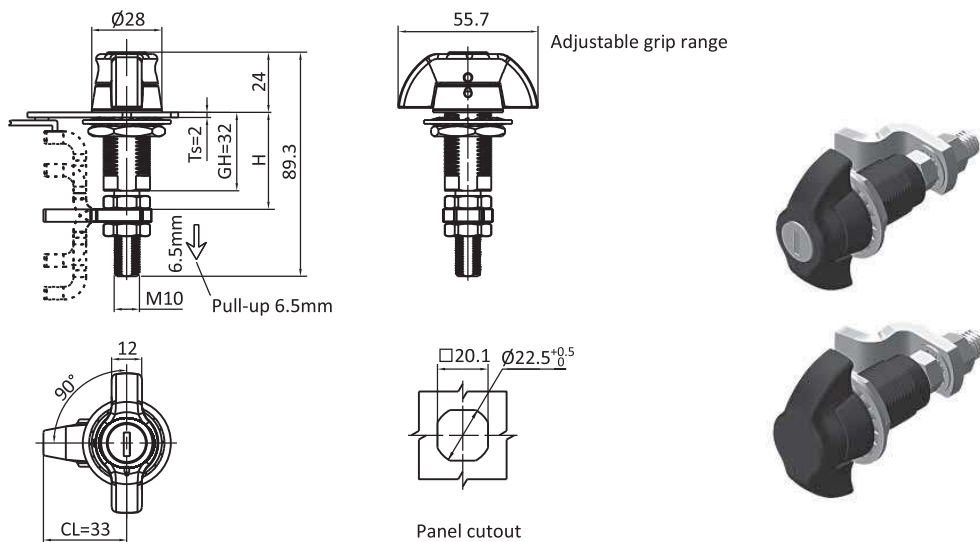
Cam Style	Grip Range (mm)	Key Locking (Cylinder type needs to be specified)	
		Non-Locking	Key Locking
Reversed	11.4 - 27.2	0850297	0850298
	25.4 - 41.1	0850297S01	0850298S01
Straight	38.9 - 54.6	0850297S02	0850298S02
	52.6 - 68.3	0810238S01	0850298S01
Offset	66.3 - 76.2	0850297	0850298

T-HANDLE COMPRESSION LATCHES - LONG SHAFT

DESCRIPTION	For easy, secure, and compressive latching and locking of doors and flaps.
MATERIAL	Handle and Housing: Die cast zinc Shaft: Mild steel
SURFACE	Handle and Housing: Black powder coated Shaft: Zinc plated



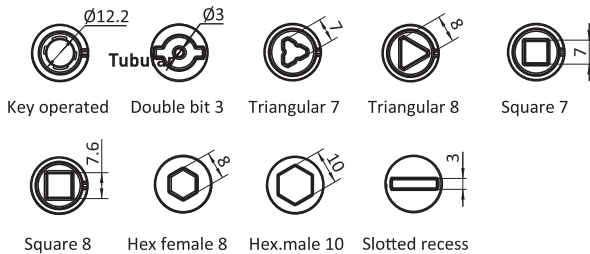
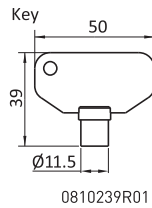
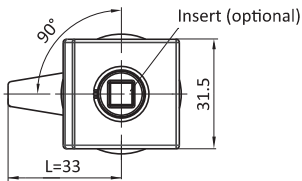
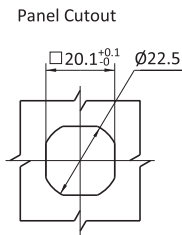
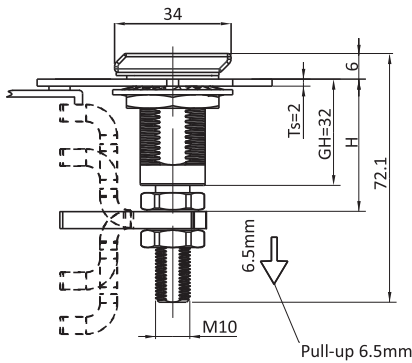
WINGKNOB COMPRESSION LATCHES



Cam Orientation	Grip Range		T-HANDLE		WING KNOB	
	Minimum	Maximum	FH751 Key locking	Non-locking	FH333 Key locking	Non-locking
Reversed Cam	11.4	27.2	0850144	0850147	0813099	0813102
	25.4	41.1	0850145	0850148	0813100	0813103
Straight Cam	38.9	54.6	0850146	0850149	0813101	0813104
Offset Cam	52.6	68.3	0850145	0850148	0813100	0813103
	66.3	76.2	0850144	0850147	0813099	0813102

SQUARE FACE COMPRESSION LATCHES

DESCRIPTION	For easy, secure, and compressive latching and locking of doors and flaps.
MATERIAL	Housing and cylinder: Die-cast zinc Cam: Mild steel
SURFACE	Housing and cylinder: Black powder coated Cam: Zinc plated
SPECIALS	Right and left IP65 / NEMA 4

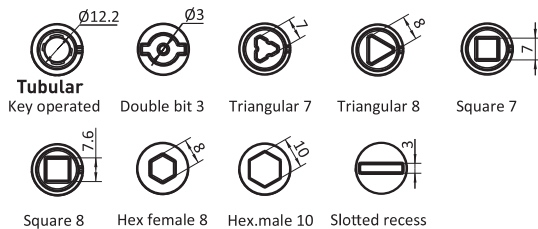
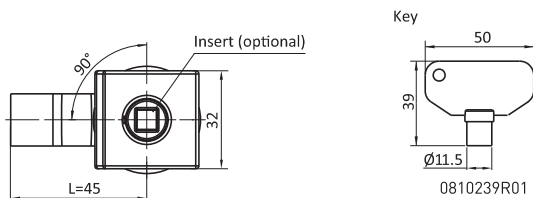
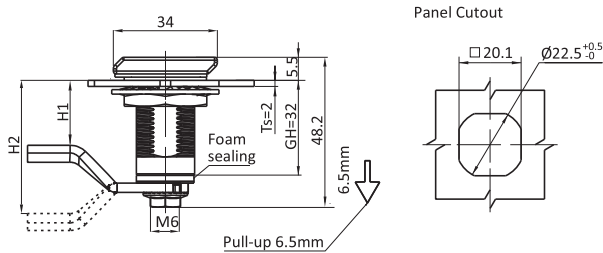


Shaft Style	Cam Style	Grip Range (mm)	Tubular Key Operated	Double Bit 3mm	Triangular 7mm	Triangular 8mm	Square 7mm	Square 8mm	Slotted Recess	Hex Female 8mm	Hex Male 10mm
Long Shaft	Reversed	11.4 - 27.2	0813072	0813073	0813074	0813075	0813076	0813077	0813078	0813079	0813080
		25.4 - 41.1	0813081	0813082	0813083	0813084	0813085	0813086	0813087	0813088	0813089
	Straight	38.9 - 54.6	0813090	0813091	0813092	0813093	0813094	0813095	0813096	0813097	0813098
		52.6 - 68.3	0813081	0813082	0813083	0813084	0813085	0813086	0813087	0813088	0813089
Offset		66.3 - 76.2	0813072	0813073	0813074	0813075	0813076	0813077	0813078	0813079	0813080



SQUARE FACE COMPRESSION LATCHES

DESCRIPTION	For easy, secure, and compressive latching and locking of doors and flaps.
MATERIAL	Housing and cylinder: Die-cast zinc Cam and shaft: Mild steel
SURFACE	Housing and cylinder: Black powder coated Cam and shaft: Zinc plated
SPECIALS	Right and left IP65 / NEMA 4



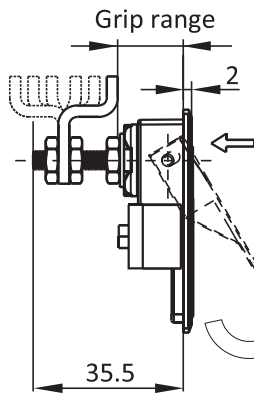
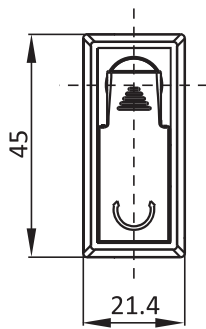
Shaft Style	Cylinder Style	Part #
Fixed H Dimension	Tubular Key operated	0813117
	Double bit 3mm	0813118
	Triangular bit 7mm	0813119
	Triangular bit 8mm	0813120
	Square 7mm	0813121
	Square 8mm	0813122
	Slotted recess	0813123
	Hex female 8mm	0813124
	Hex female 10mm	0813125

Compatible cams see pages 47, 211-219

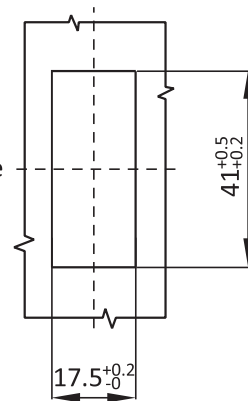
HANDLE COMPRESSION LATCHES

DESCRIPTION	For easy, secure, and compressive latching and locking of doors and flaps.
MATERIAL	Housing and cylinder: Die-cast zinc Cam: Mild steel
SURFACE	Housing and cylinder: Black powder coated / chrome plated Cam: Zinc plated

Small size



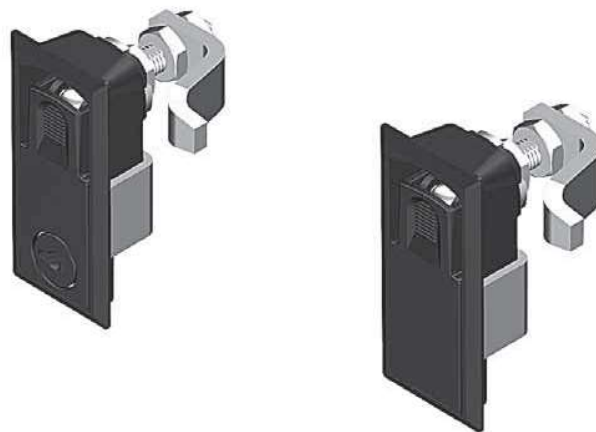
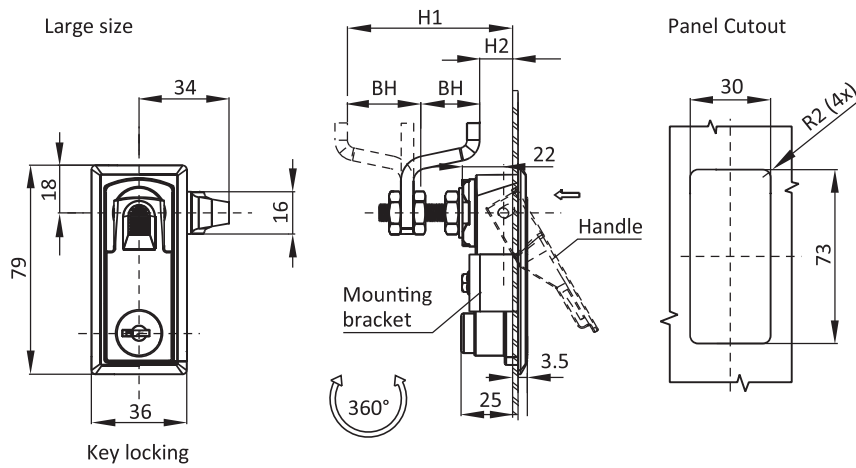
Panel Cutout



Cylinder Style	Cam forward Min - Max [mm]	Cam reversed Min - Max [mm]	Die-cast Zinc, black powder coated	Die-cast Zinc, chrome plated
Non-Locking	4.5 - 10.5	34.5 - 40.5	0813318	0813319
	10.5 - 16.5	28.5 - 34.5	0813320	0813321
	16.5 - 22.5	22.5 - 28.5	0813322	0813323

HANDLE COMPRESSION LATCHES

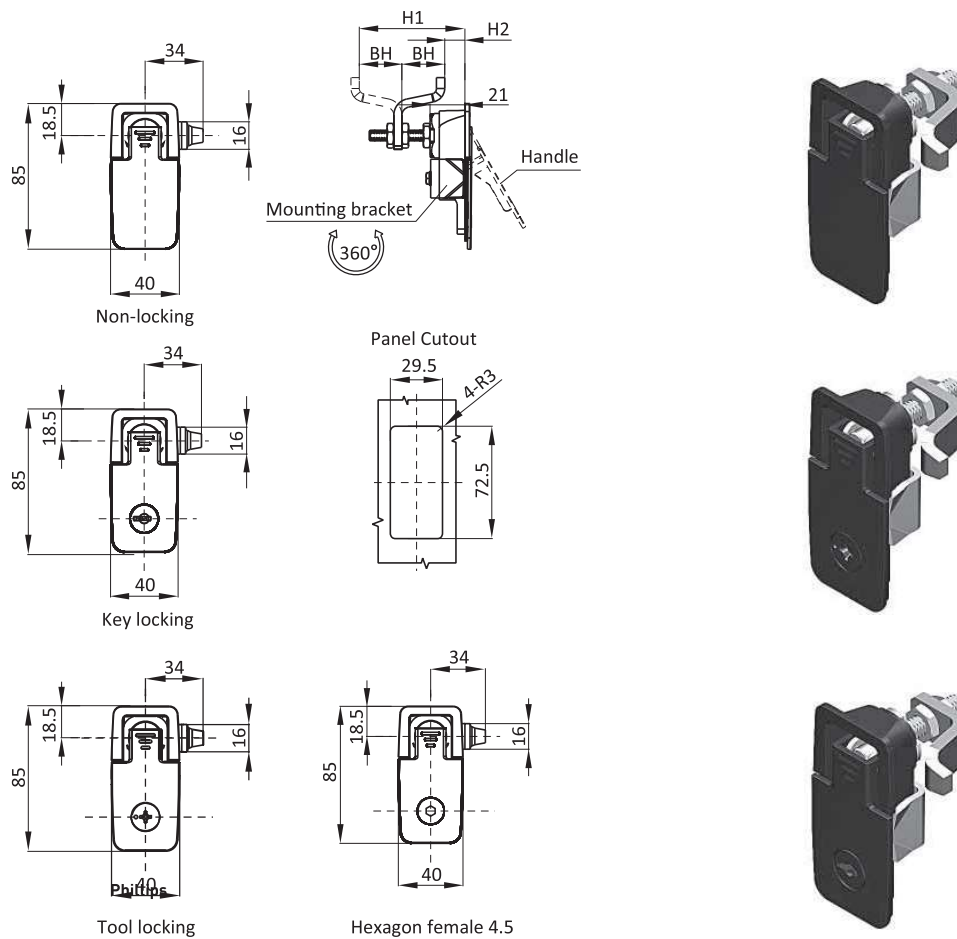
DESCRIPTION	For easy, secure, and compressive latching and locking of doors and flaps.
MATERIAL	Housing and cylinder: Die-cast zinc Cam: Mild steel
SURFACE	Housing and cylinder: Black powder coated / chrome plated Cam: Zinc plated



Cylinder Style	Cam forward		Die-cast Zinc, black powder coated		Die-cast Zinc, chrome plated	
	Min	Max [mm]	Min	Max	Min	Max
Non-Locking		6 - 16	56	66	0811050	0811051
		16 - 26	46	56	0811052	0811053
		26 - 36	36	46	0811054	0811055
Key locking FH751		6 - 16	56	66	0811056	0811057
		16 - 26	46	56	0811058	0811059
		26 - 36	36	46	0811060	0811061
Tool locking		6 - 16	56	66	0811062	0811063
		16 - 26	46	56	0811064	0811065
		26 - 36	36	46	0811066	0811067

HANDLE COMPRESSION LATCHES

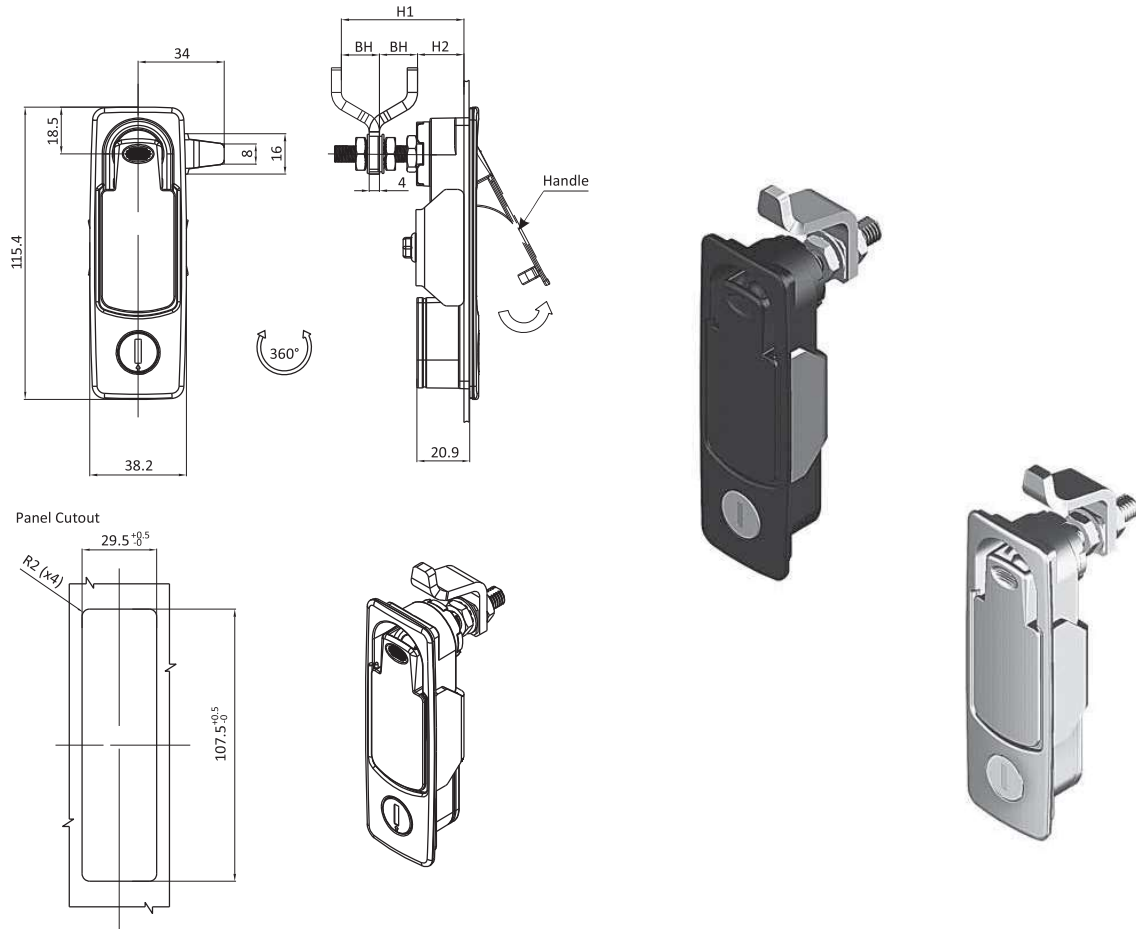
DESCRIPTION	For easy, secure, and compressive latching and locking of doors and flaps.
MATERIAL	Housing and cylinder: Die-cast zinc Cam: Mild steel
SURFACE	Housing and cylinder: Black powder coated / chrome plated Cam: Zinc plated



Cylinder Style	Cam forward Min - Max [mm]		Cam reversed Min - Max [mm]		Die-cast Zinc, black powder coated	Die-cast Zinc, chrome plated
	6 - 16	16 - 26	56 - 66	46 - 56		
Non-Locking	6 - 16	16 - 26	56 - 66	46 - 56	0810039	0810048
	16 - 26	26 - 36	46 - 56	36 - 46	0810040	0810010
	26 - 36	36 - 46	36 - 46	36 - 46	0810041	0810011
Key locking FH751	6 - 16	16 - 26	56 - 66	46 - 56	0810042	0810012
	16 - 26	26 - 36	46 - 56	36 - 46	0810043	0810049
	26 - 36	36 - 46	36 - 46	36 - 46	0810044	0810050
Phillips locking	6 - 16	16 - 26	56 - 66	46 - 56	0810045	0810051
	16 - 26	26 - 36	46 - 56	36 - 46	0810046	0810052
	26 - 36	36 - 46	36 - 46	36 - 46	0810047	0810053
Hexagon female 4.5	6 - 16	16 - 26	56 - 66	46 - 56	0811044	0811047
	16 - 26	26 - 36	46 - 56	36 - 46	0811045	0811048
	26 - 36	36 - 46	36 - 46	36 - 46	0811046	0811049
	16 - 24	46 - 66	46 - 66		0810046S01	

HANDLE COMPRESSION LATCHES

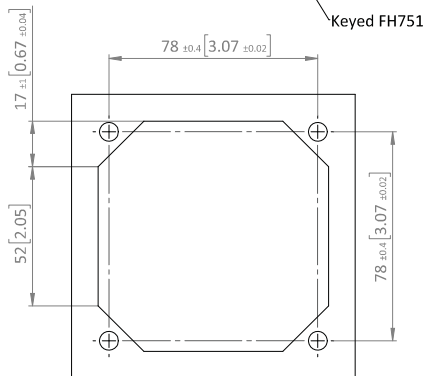
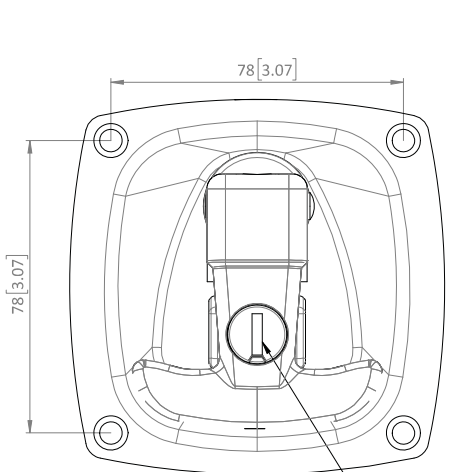
DESCRIPTION	For easy, secure, and compressive latching and locking of doors and flaps.
MATERIAL	Housing, handle, and trigger: Die-cast zinc Cam: Mild steel
SURFACE	Housing, handle, and trigger: Black powder coated / chrome plated Cam: Zinc plated



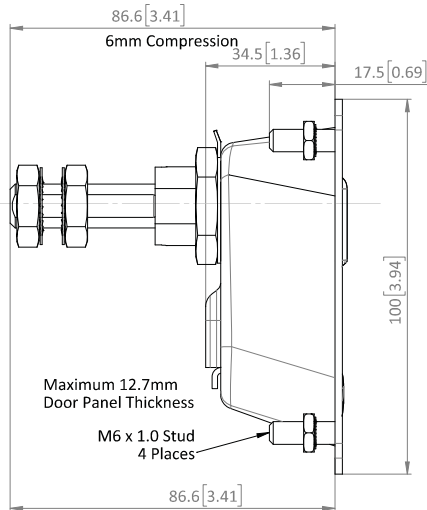
Cylinder Style	Cam forward Min - Max (mm)	Cam reversed Min - Max (mm)	Die-cast Zinc, black powder coated	Die-cast Zinc, chrome plated
	6 - 16	56 - 66	0811068	0811071
FH1245 Key locking	1 - 11	15 - 30	0811069	0811072
	1 - 11	15 - 30	0811070	0811073

T-HANDLE COMPRESSION LATCHES

DESCRIPTION	For easy, secure, and compressive latching and locking of doors and flaps.
MATERIAL	Housing, handle, and trigger: Die-cast zinc Cam: Mild steel
SURFACE	Housing, handle, and trigger: Black powder coated Cam: Zinc plated



PANEL CUTOUT

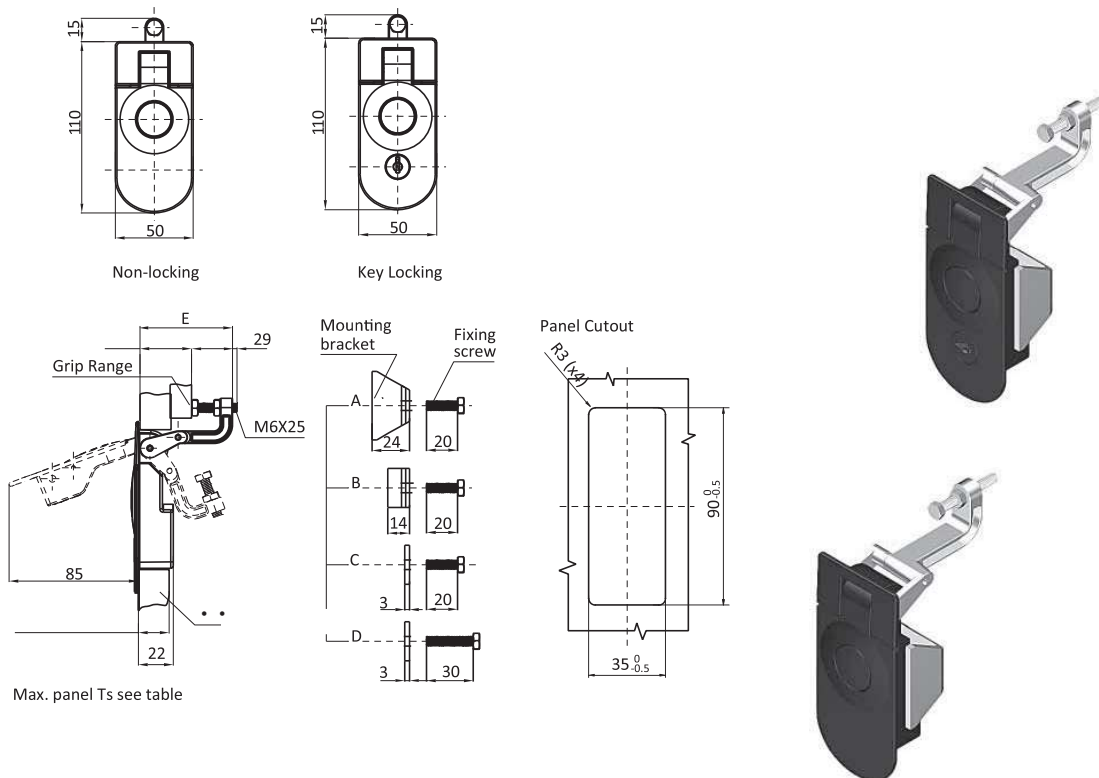


CAM
 Specify grip range

FH751 Key Locking
0810054

HANDLE COMPRESSION LATCHES

DESCRIPTION	For easy, secure, and compressive latching and locking of doors and flaps. Panel thickness must be 1 - 11 mm.
MATERIAL	Housing, handle, and trigger: Die-cast zinc Bolt: Mild steel
SURFACE	Housing, handle, and trigger: Black powder coated Bolt: Zinc plated

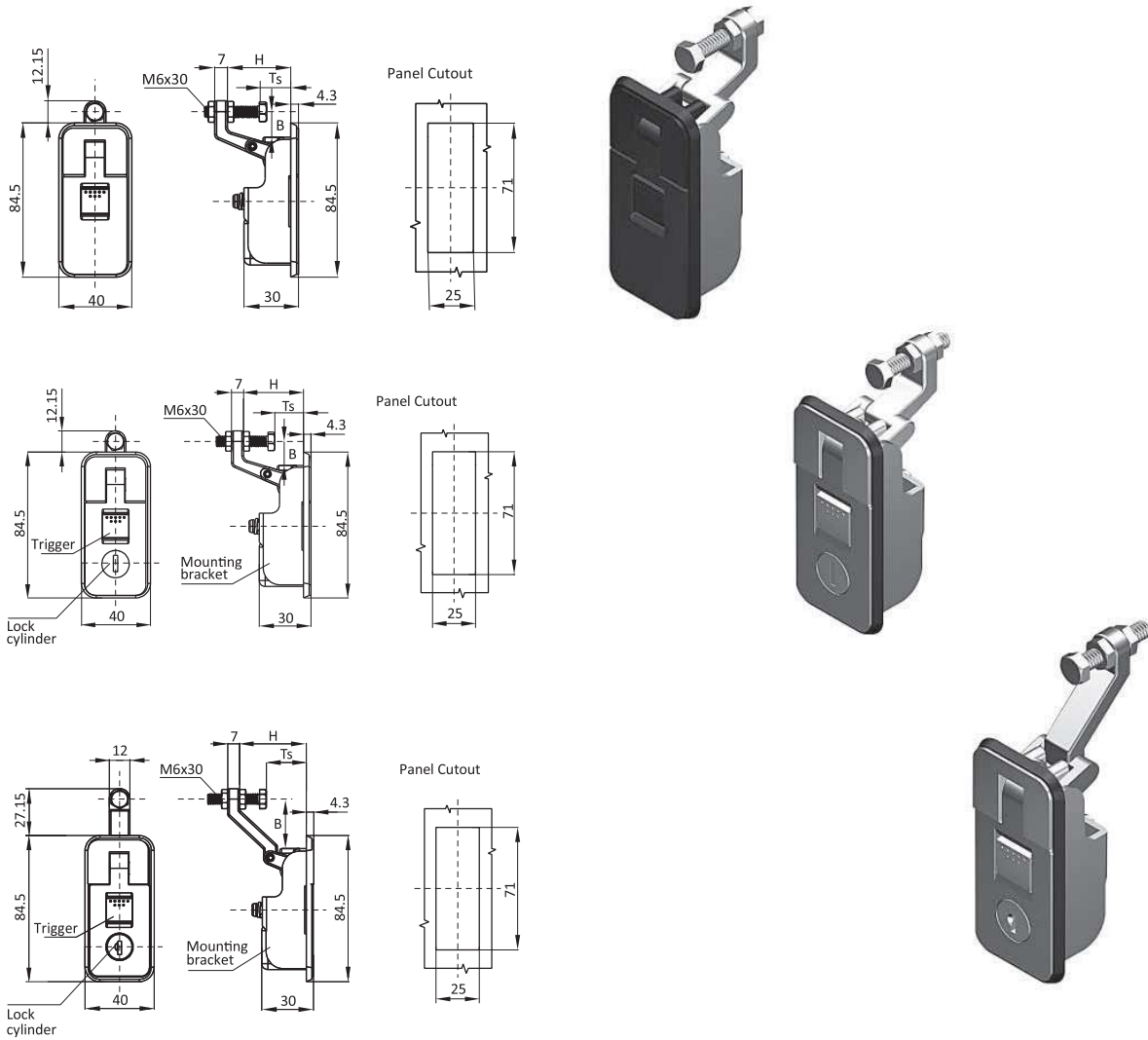


Max. panel Ts see table

Mounting Bracke	Panel Thickness Min - Max [mm]	Grip Range Min - Max [mm]	E [mm]	Non Locking	FH751 Key Locking with Shutter	FH751 Key Locking	Phillips Drive
A	1 - 11	1 - 14	29	0810072	0813001	0810076	0813003
B	11 - 21	1 - 14	29	0813004	0813005	0813006	0813007
A	1 - 11	14 - 29	44	0810073	0813009	0810077	0813011
B	11 - 21	14 - 29	44	0813012	0813013	0813014	0813015
C	21 - 31	14 - 29	44	0813016	0813017	0813018	0813019
A	1 - 11	29 - 45	60	0810074	0813021	0810088	0813023
B	11 - 21	29 - 45	60	0813024	0813025	0813026	0813027
C	21 - 31	29 - 45	60	0813028	0813029	0813030	0813031
D	31 - 41	29 - 45	60	0813032	0813033	0813034	0813035
A	1 - 11	45 - 57	72	0810075	0813037	0810089	0813039
B	11 - 21	45 - 57	72	0813040	0813041	0813042	0813043
C	21 - 31	45 - 57	72	0813044	0813045	0813046	0813047
D	31 - 41	45 - 57	72	0813048	0813049	0813050	0813051

HANDLE COMPRESSION LATCHES

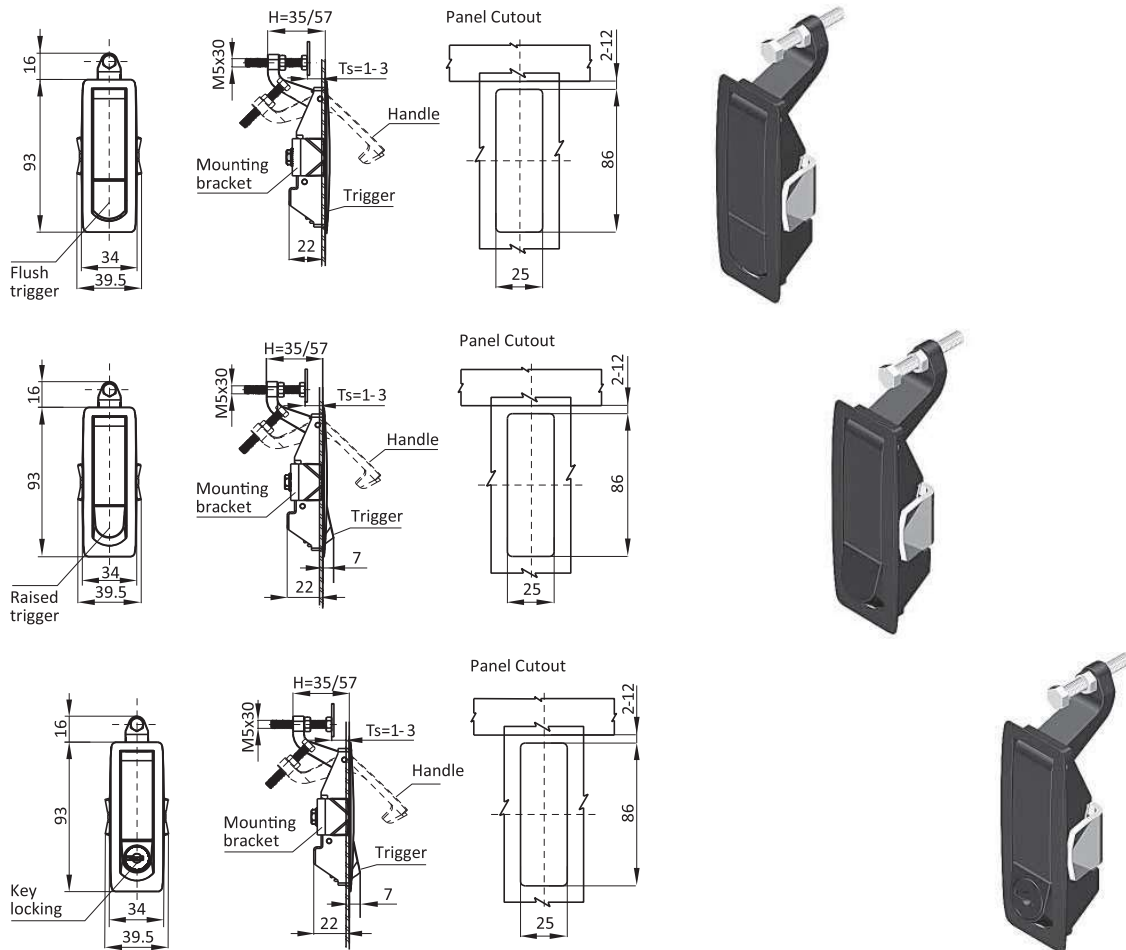
DESCRIPTION	For easy, secure, and compressive latching and locking of doors and flaps.
MATERIAL	Housing and handle: Die-cast zinc Bolt and trigger: Mild steel
SURFACE	Housing and handle: Black powder coated Bolt and trigger: Zinc plated



Grip Range [mm]	Lock Style	Die-cast Zinc, black powder coated	Die-cast Zinc, chrome plated
		0810498	0810499
1 - 25	Non-locking	0810498	0810499
	Key locking w. shutter [CH751]	0810500	0810501
15 - 30	Non-locking	0810502	0810503
	Key locking w. shutter [CH751]	0810504	0810505

TRIGGER LATCHES

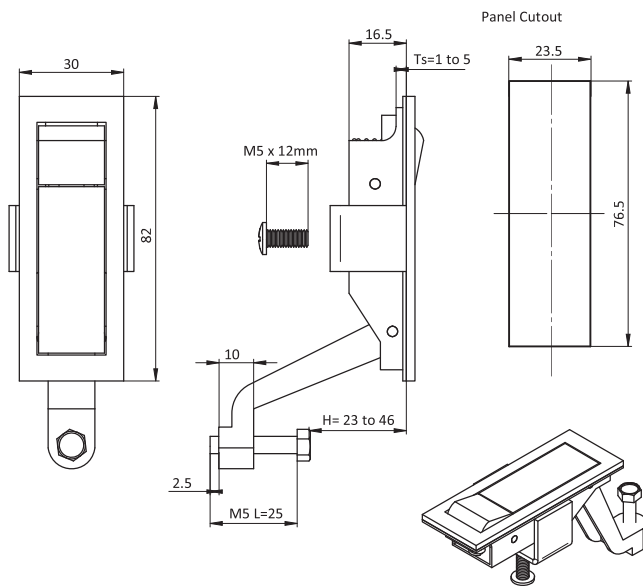
DESCRIPTION	For easy, secure, and compressive latching and locking of doors and flaps.
MATERIAL	Housing, handle, and trigger: Die-cast zinc Bolt: Mild steel
SURFACE	Housing, handle, and trigger: Black powder coated / chrome plated Bolt: Zinc plated



Trigger Latches	Trigger Style	Die-cast Zinc, black powder coated	Die-cast Zinc, chrome plated	NEMA 4 black powder coated
Short arm Grip range 1 - 24 mm	Non-locking raised trigger	0810056	0810060	0850240
	Non-locking flush trigger	0810057	0810061	0850241
	FH751 key locking	0810058	0810062	0850242
	Phillips Drive	0811074	0811076	0850243
	FH751 key locking with shutter	0810059	0810063	0850244
	Hexagon female 4.5mm	0811075	0811077	0850245
Long arm Grip range 23 - 46 mm	Non-locking raised trigger	0810064	0810068	0850246
	Non-locking flush trigger	0810065	0810069	0850247
	FH751 key locking	0810066	0810070	0850248
	Phillips Drive	0811078	0811080	0850249
	FH751 key locking with shutter	0810067	0810071	0850250
	Hexagon female 4.5mm	0811079	0811081	0850251

TRIGGER LATCHES

DESCRIPTION	For easy, secure, and compressive latching and locking of doors and flaps.
MATERIAL	304 SS / die-cast zinc
SURFACE	Black powder coated / Chrome plated

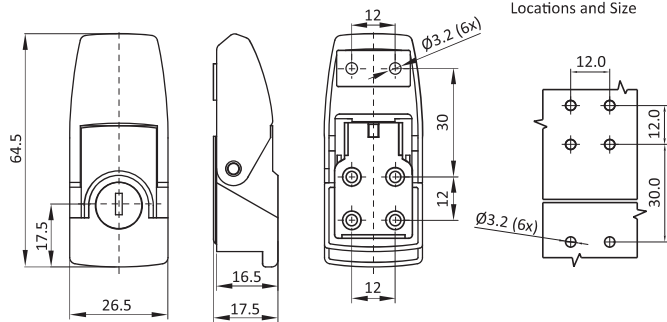


Trigger Latch	Grip Range [mm]	Version	Part #
	23 - 46	Die-cast zinc, chrome plated	0810093
	23 - 46	304 SS	0810093E
	23 - 46	Die-cast zinc, black powder coated	0810093S01
	35 - 58	Die-cast zinc, black powder coated	0810093S03

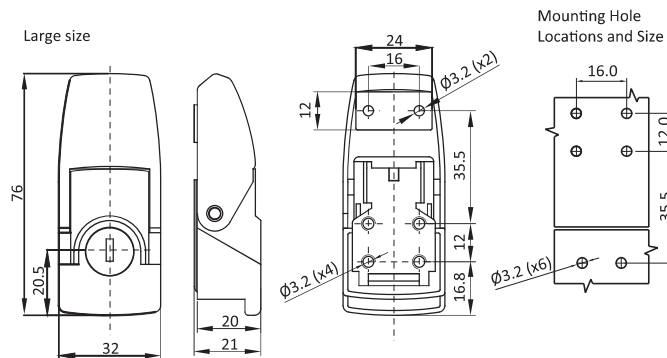
OVER-CENTER DRAW LATCHES

DESCRIPTION	For easy, secure, and compressive latching and locking of doors and flaps.
MATERIAL	Die-cast zinc
SURFACE	Black powder coated / chrome plated

Small size



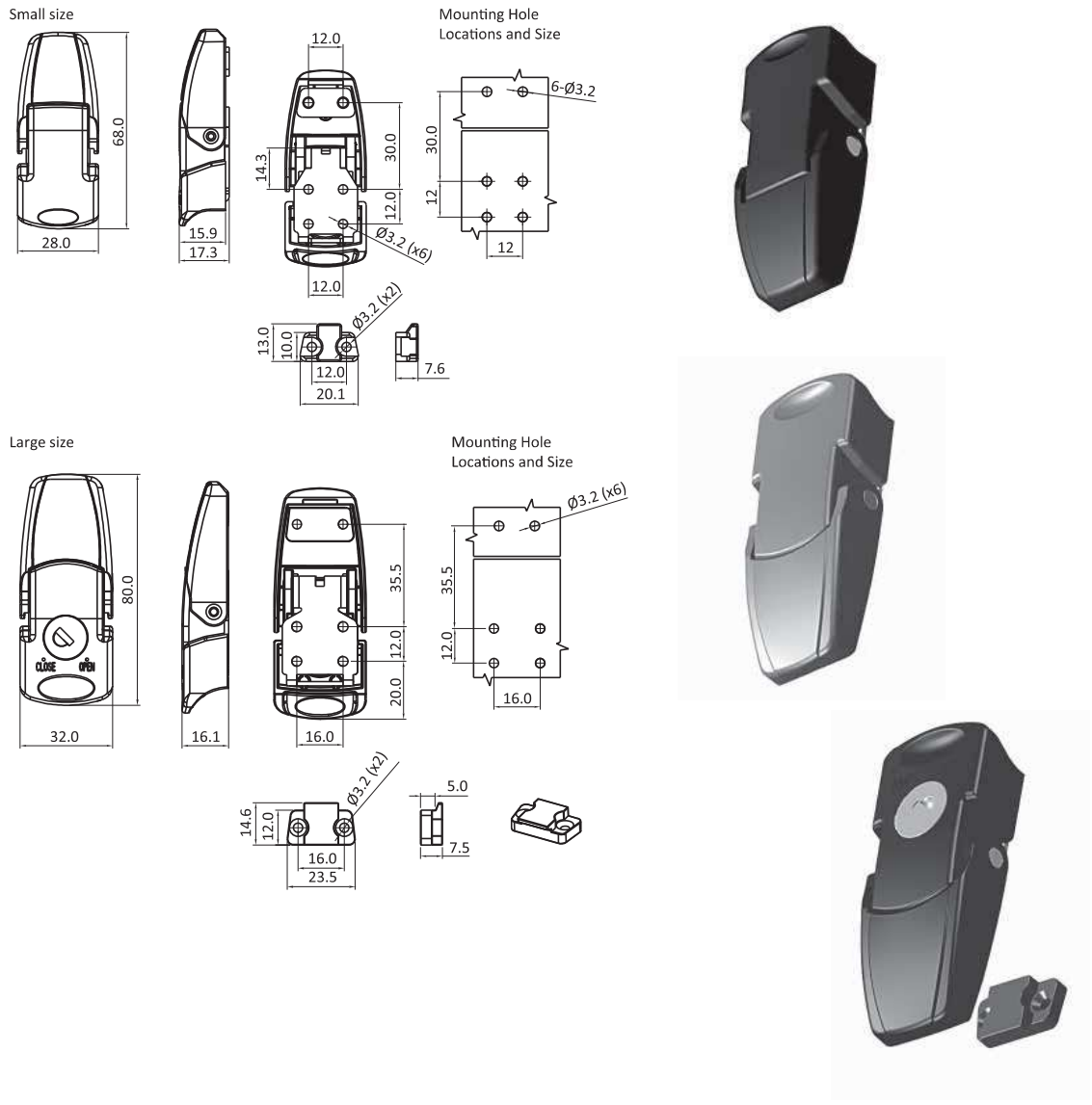
Large size



Over-Center Draw Latches	Lock Style	Die-cast Zinc, black powder coated	Die-cast Zinc, chrome plated
Small	Non-locking	0813070	0813071
	Key Locking (D200)	0813066	0813067
Large	Non-locking	0813068	0813069
	Key locking (D200)	0813489	0813065

OVER-CENTER DRAW LATCHES

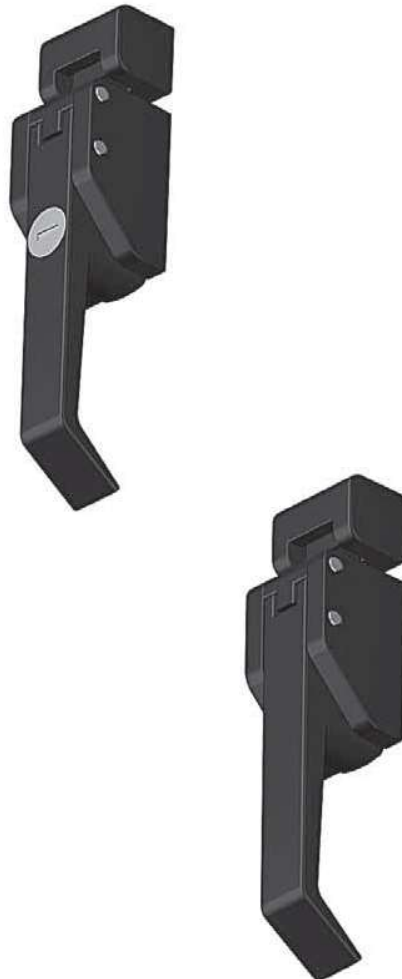
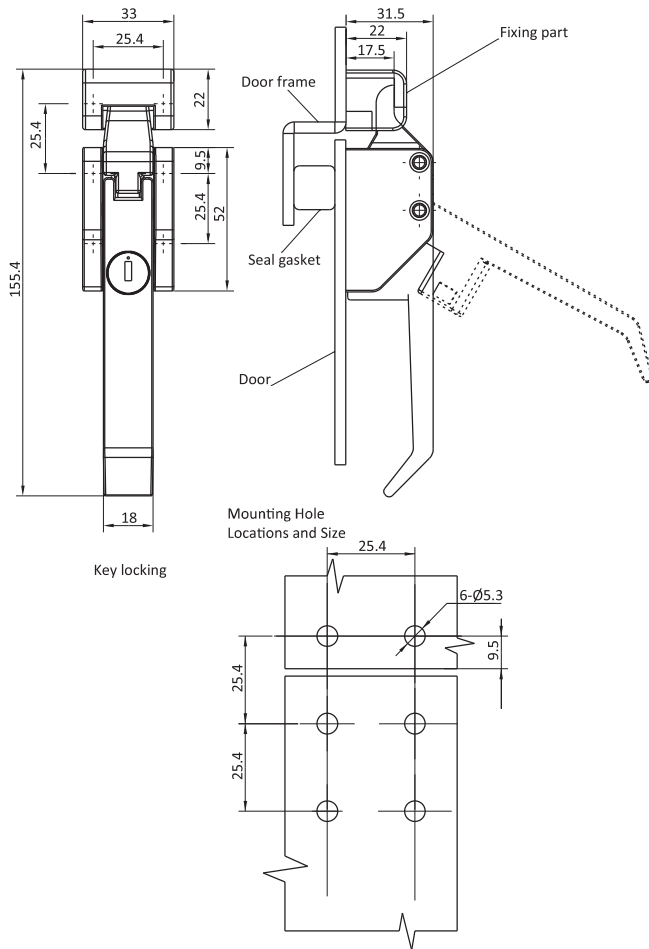
DESCRIPTION	For easy, secure, and compressive latching and locking of doors and flaps.
MATERIAL	Die-cast zinc
SURFACE	Black powder coated / chrome plated



Over-Center Draw Latches	Lock Style	Die-cast Zinc, black powder coated	Die-cast Zinc, chrome plated
Small	Non-locking	0810100	0810102
	Key locking FH200	0810096	0810098
Large	Non-locking	0810099	0810101
	Key locking FH200	0810095	0810097

OVER-CENTER DRAW LATCHES

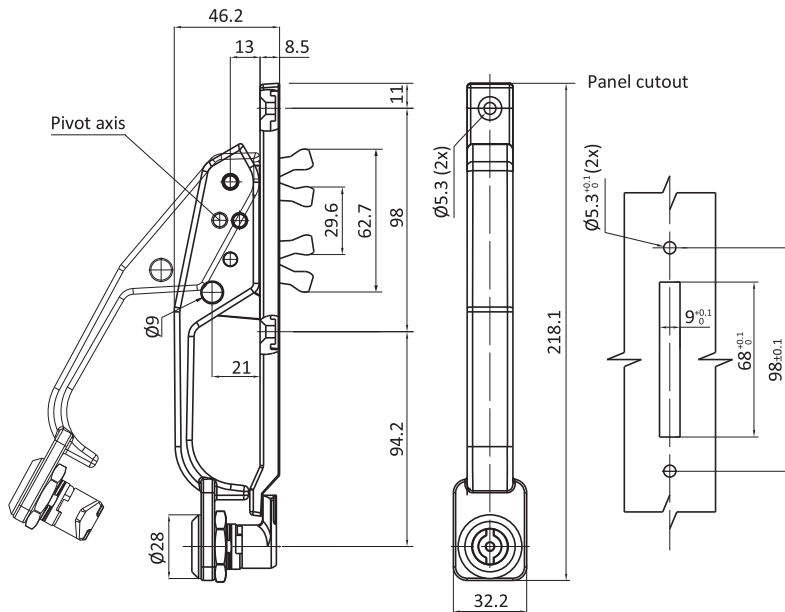
DESCRIPTION	For easy, secure, and compressive latching and locking of doors and flaps.
MATERIAL	Die-cast zinc / 316 SS
SURFACE	Black powder coated / Chrome plated



Screw Hole	Lock Style	Die-cast Zinc, black powder coated	Die-cast Zinc, chrome plated	316 SS
M5 x 0.8	FH751 locking	0810433	0810435	0810434
	Non-locking	0810430	0810432	0810431
10 - 32UNC	FH751 locking	0813052	0813053	0813054
	Non-locking	0813055	0813056	0813057

DRAW LATCHES

DESCRIPTION	For easy and secure latching and locking of doors and flaps. Wide range of cams and accessories.
MATERIAL	Die-cast zinc
SURFACE	Black Powder Coat / Black E-Coat / RAL 7012 Powder Coat
SPECIALS	Double Bit 4mm Insert



Push To Close Quarter Turn Locks

Die-cast Zinc,
black powder coated

0810121

Die-cast Zinc,
black E-coated

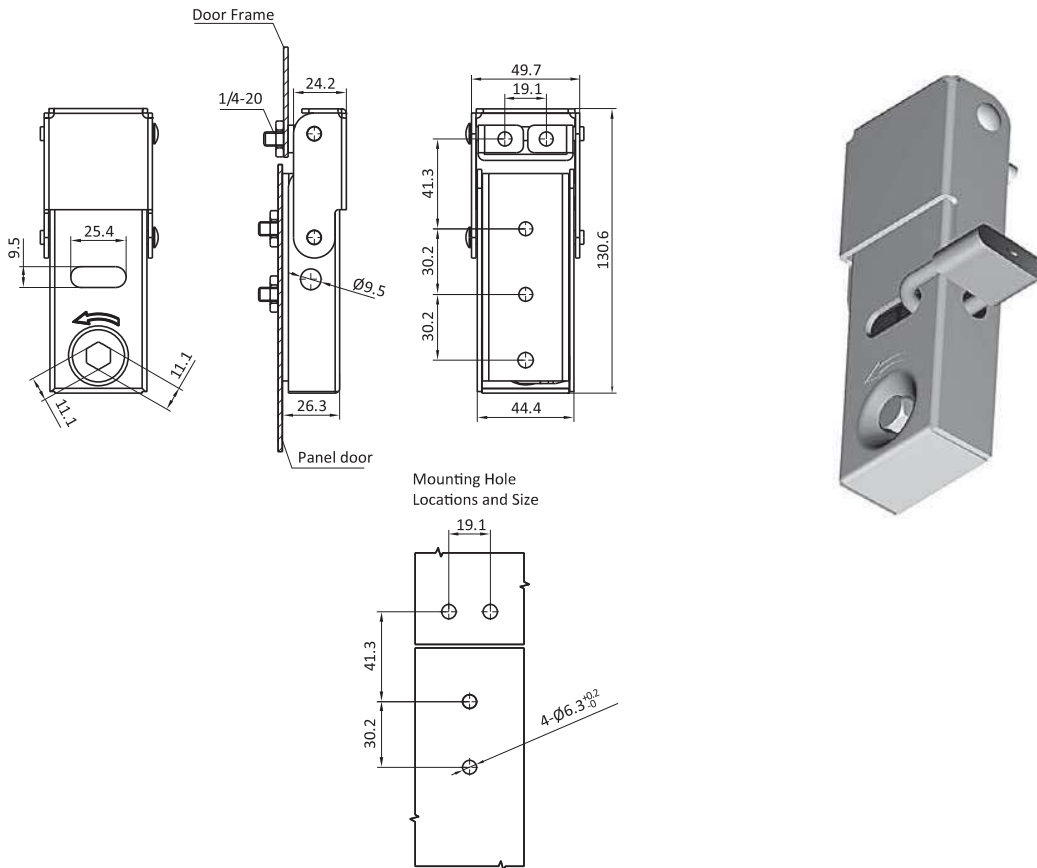
0810122

Die-cast Zinc,
RAL 7012 powder coated

0811037

OVER-CENTER DRAW LATCHES

DESCRIPTION	For easy, secure, and compressive latching and locking of doors and flaps.
MATERIAL	304 / 316 SS / Mild Steel
SURFACE	Zinc plated
SPECIALS	Pad lock compatible



Over-Center Draw Latches	Material	Part #
	316 SS	0813062
	304 SS	0813063
	Mild Steel	0813064