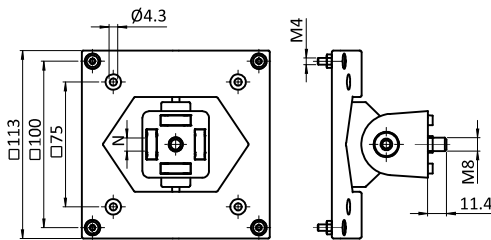




MONITORHALTER

MONITOR MOUNT

Ausführung	schwenkbar	Model	Swivelling
Beschreibung	zur beweglichen Befestigung von Flachbildschirmen an Profilkonstruktionen, VESA MIS-D 75/100 kompatibel, horizontal und vertikal zum Blickbereich ausrichtbar	Description	To fix flat screens to aluminum profile structures, VESA MIS-D 75/100 compatible, can be adjusted horizontally and vertically for optimum visibility
Material	Monitorhalter: Kunststoff PA, glasfaserverstärkt Gelenkhälfte: Kunststoff PA, glaskugelverstärkt Nutfixierung: Kunststoff PA, glasfaserverstärkt Befestigungsmaterial: Stahl	Material	Monitor bracket: Plastic PA, glass fiber reinforced Articulation piece: Plastic PA, glass fiber reinforced Centering piece: Plastic PA, glass fiber reinforced Mounting material: Steel
Farbe	Monitorhalter: schwarz Gelenkhälfte: grau Nutfixierung: blank	Color	Monitor bracket: Black Articulation piece: Gray Centering piece: Plain
Liefereinheit	10 Stück	Pack Quantity	10 pieces
Extras	weitere Farben, weitere Größen auf Anfrage	Specials	Other colors, other sizes on request



Monitorhalter Monitor Mount	F [N]	N	Gewicht [g] Weight [g]	Teil-Nr. Part #
	110	- / 8 / 10	200.0	061SM7510040

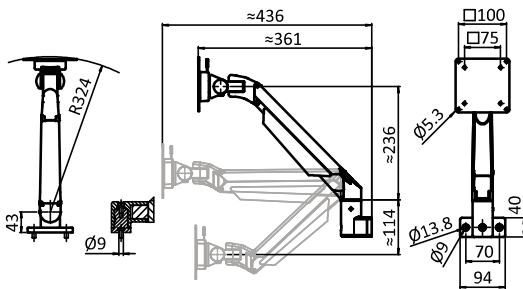
**MONITORHALTER 4 ACHSEN, HÖHENVERSTELLBAR****MONITOR SUPPORT 4-AXIS, HEIGHT ADJUSTABLE**

Ausführung	4 Achsen	Model	4-axis
Beschreibung	einsatzfertiger Monitorhalter mit beigelegter Befestigungsplatte inkl. Flansch zur Befestigung an vertikalen oder horizontalen Profilen; 360° drehbar (vertikal); für Monitore mit genormtem VESA-Anschluss (VESA 75 und 100); einstellbare Last 2 – 10 kg	Description	<i>Ready-to use monitor support with flanged fixation plate for attaching on vertical or horizontal aluminum profiles; (vertically) pivotable 360°; for monitors with standard VESA connection (VESA 75 and 100); adjustable load 2 – 10 kg</i>
Material	Befestigungsplatte VESA, abnehmbar: Stahl / Kunststoff Monitorhalter: Aluminiumdruckguss Abdeckung Kabelführung: Kunststoff Lagerscheiben und -hülsen: Kunststoff Montage-Flansch: Aluminiumdruckguss Montage-Adapter: Aluminiumdruckguss Schrauben: Stahl	Material	<i>Mounting plate VESA, removable: Steel / Plastic Monitor mount: Die-cast aluminum Cable management cover: Plastic Bearing shims and bushes: Plastic Mounting flange: Die-cast aluminum Mounting adapter: Die-cast aluminum Screws: Steel</i>
Farbe	Befestigungsplatte VESA, abnehmbar: alufarbig / schwarz Monitorhalter: alufarbig Abdeckung Kabelführung: schwarz Lagerscheiben und -hülsen: schwarz Montage-Flansch: alufarbig Montage-Adapter: alufarbig	Color	<i>Mounting plate VESA, removable: Alu color / black Monitor mount: Alu color Cable management cover: Black Bearing shims and bushes: Black Mounting flange: Alu color Mounting adapter: alu color</i>
Oberfläche	Befestigungsplatte VESA, abnehmbar: lackiert Monitorhalter: lackiert Montage-Flansch: lackiert Montage-Adapter: lackiert Schrauben: verzinkt	Surface	<i>Mounting plate VESA, removable: Lacquered Monitor mount: Lacquered Mounting flange: Lacquered Mounting adapter: Lacquered Screws: Zinc plated</i>
Set	1 Befestigungsplatte VESA inklusive 4 Schrauben – M4 × 12, Kreuzschlitz 1 Monitorhalter 4 Achsen inklusive Abdeckung Kabelführung 1 Montage-Flansch 1 Montageschraube DIN 6912 – M8 × 25 1 Montage-Adapter 2 Montageschrauben DIN 6912 – M8 × 16 1 Sechskantschlüssel, SW 3 1 Sechskantschlüssel, SW 4	Set	<i>1 mounting plate VESA with 4 screws – M4 × 12, Phillips 1 monitor support 4-axis with cable management cover 1 mounting flange 1 mounting screw DIN 6912 – M8 × 25 1 mounting adapter 2 mounting screws DIN 6912 – M8 × 16 1 hexagon key, SW 3 1 hexagon key, SW 4</i>
Liefereinheit	1 Stück	Pack Quantity	1 piece



MONITORHALTER 4 ACHSEN, HÖHENVERSTELLBAR

MONITOR SUPPORT 4-AXIS, HEIGHT ADJUSTABLE



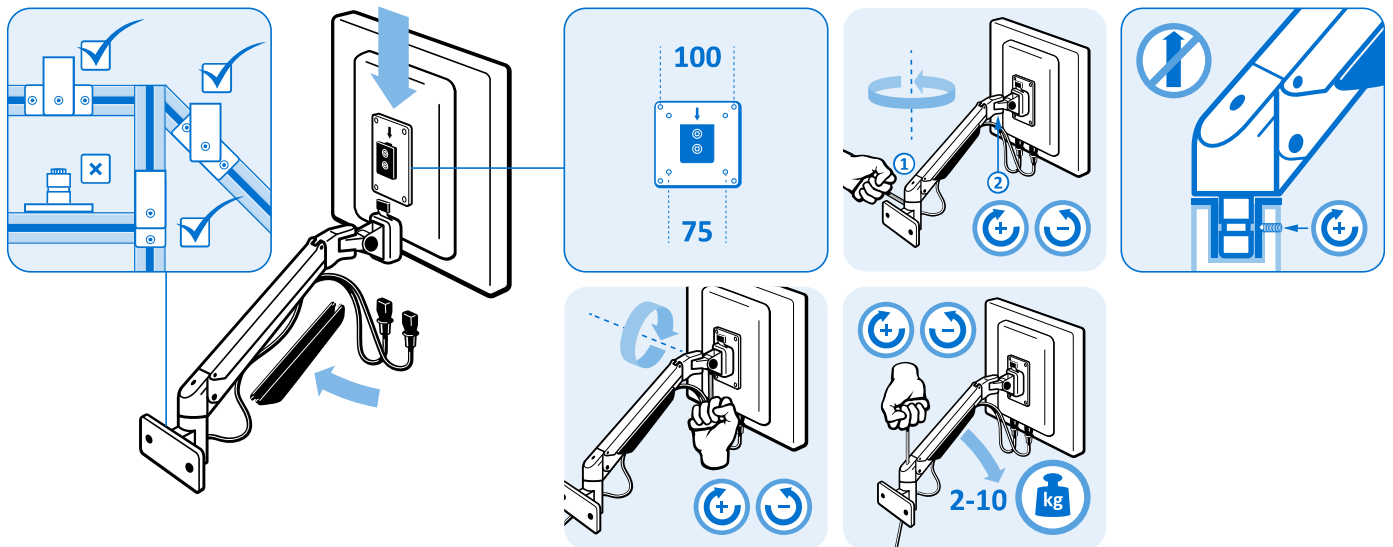
Monitorhalter 4 Achsen, höhenverstellbar
 Monitor Support 4-axis, Height Adjustable

Gewicht [g]
 Weight [g]

Teil-Nr.
 Part #

2200.0

6MHM75100S40



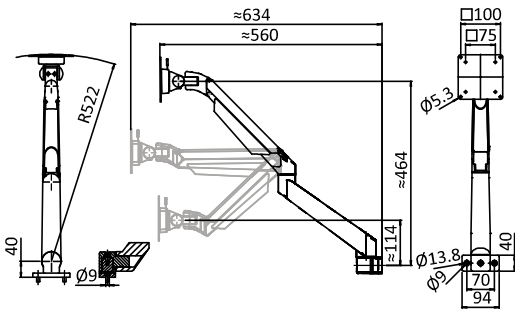
**MONITORHALTER 5 AXSEN, HÖHENVERSTELLBAR****MONITOR SUPPORT 5-AXIS, HEIGHT ADJUSTABLE**

Ausführung	5 Achsen	Model	5-axis
Beschreibung	einsatzfertiger Monitorhalter mit beigelegter Befestigungsplatte inkl. Flansch zur Befestigung an vertikalen oder horizontalen Profilen oder auf Flächen; 360° drehbar (vertikal); für Monitore mit normtem VESA-Anschluss (VESA 75 und 100); einstellbare Last 2 –10 kg	Description	<i>Ready-to use monitor support with flanged fixation plate for attaching on vertical or horizontal aluminum profiles or on plane surfaces; (vertically) pivotable 360°; for monitors with standard VESA connection (VESA 75 and 100); adjustable load 2 – 10 kg</i>
Material	Befestigungsplatte VESA, abnehmbar: Stahl / Kunststoff Monitorhalter: Aluminiumdruckguss Abdeckung Kabelführung: Kunststoff Lagerscheiben und -hülsen: Kunststoff Montage-Flansch: Aluminiumdruckguss Montage-Adapter: Aluminiumdruckguss Schrauben: Stahl	Material	<i>Mounting plate VESA, removable: Steel / Plastic Monitor mount: Die-cast aluminum Cable management cover: Plastic Bearing shims and bushes: Plastic Mounting flange: Die-cast aluminum Mounting adapter: Die-cast aluminum Screws: Steel</i>
Farbe	Befestigungsplatte VESA, abnehmbar: alufarbig / schwarz Monitorhalter: alufarbig Abdeckung Kabelführung: schwarz Lagerscheiben und -hülsen: schwarz Montage-Flansch: alufarbig Montage-Adapter: alufarbig	Color	<i>Mounting plate VESA, removable: Alu color / black Monitor mount: Alu color Cable management cover: Black Bearing shims and bushes: Black Mounting flange: Alu color Mounting adapter: alu color</i>
Oberfläche	Befestigungsplatte VESA, abnehmbar: lackiert Monitorhalter: lackiert Montage-Flansch: lackiert Montage-Adapter: lackiert Schrauben: verzinkt	Surface	<i>Mounting plate VESA, removable: Lacquered Monitor mount: Lacquered Mounting flange: Lacquered Mounting adapter: Lacquered Screws: Zinc plated</i>
Set	1 Befestigungsplatte VESA inklusive 4 Schrauben – M4 × 12, Kreuzschlitz 1 Monitorhalter 5 Achsen inklusive Abdeckung Kabelführung 1 Montage-Flansch 1 Montageschraube DIN 6912 – M8 × 25 1 Montage-Adapter 2 Montageschrauben DIN 6912 – M8 × 16 1 Sechskantschlüssel, SW 3 1 Sechskantschlüssel, SW 4	Set	<i>1 mounting plate VESA with 4 screws – M4 × 12, Phillips 1 monitor support 4-axis with cable management cover 1 mounting flange 1 mounting screw DIN 6912 – M8 × 25 1 mounting adapter 2 mounting screws DIN 6912 – M8 × 16 1 hexagon key, SW 3 1 hexagon key, SW 4</i>
Liefereinheit	1 Stück	Pack Quantity	1 piece



MONITORHALTER 5 ACHSEN, HÖHENVERSTELLBAR

MONITOR SUPPORT 5-AXIS, HEIGHT ADJUSTABLE



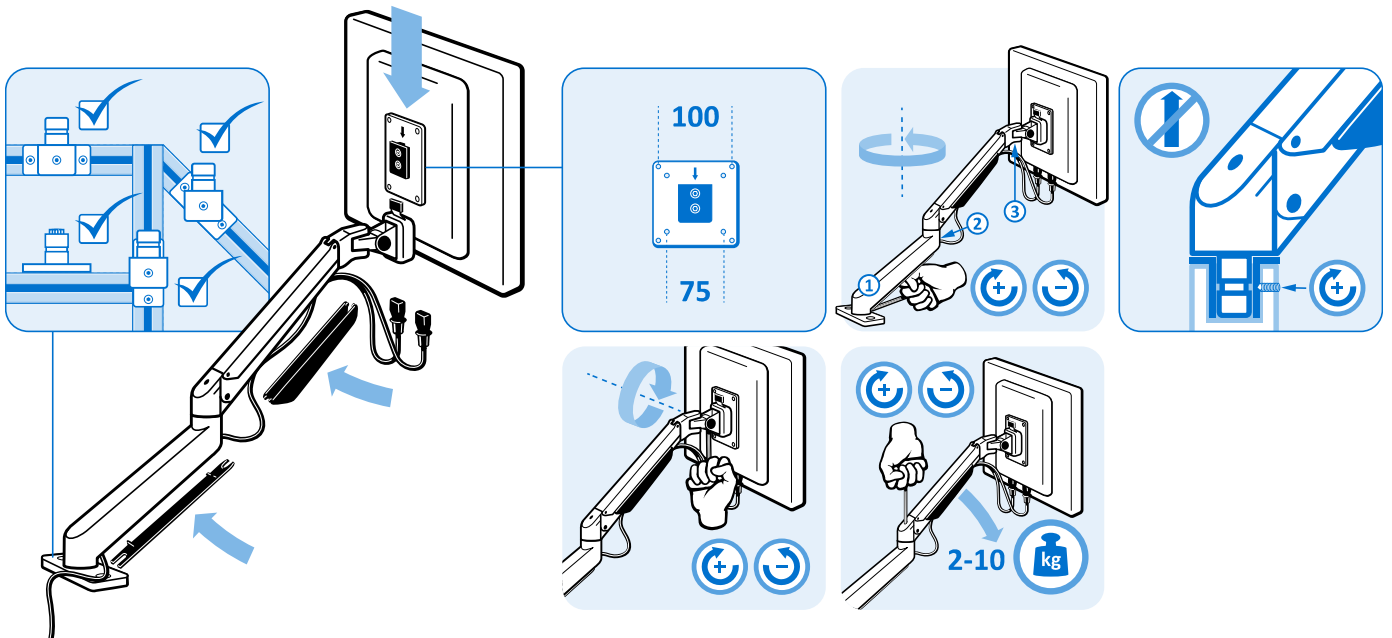
Monitorhalter 5 Achsen, höhenverstellbar
 Monitor Support 5-axis, Height Adjustable

Gewicht [g]
 Weight [g]

Teil-Nr.
 Part #

2930.0

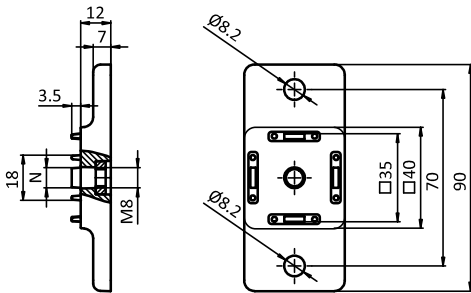
6MHM75100D40



ADAPTERPLATTE 40 HÖHENVERSTELLBAR

ADAPTER PLATE 40 HEIGHT ADJUSTABLE

Ausführung	Aluminiumdruckguss	Model	Die-cast aluminum
Beschreibung	zur rechtwinkligen Verbindung von einem Monitorhalter oder von einem Aluminiumprofil, sowie zum Herstellen einer T-Verbindung zwischen zwei Aluminiumprofilen; durch zugängliche Anschraubbohrungen ist die Position nachträglich verstellbar	Description	To connect a monitor mount or an aluminum profile at right angles, as well to tee connect two aluminum profiles; accessible mounting holes allow to adjust the position later
Material	Adapterplatte: Aluminiumdruckguss Einpressmutter: Stahl	Material	Adapter plate: Die cast aluminum Pressed nut: Steel
Oberfläche	Adapterplatte: alufarbig pulverbeschichtet Einpressmutter: verzinkt	Surface	Adapter plate: Alu color powder coated Pressed nut: Zinc plated
Liefereinheit	10 Stück	Pack Quantity	10 pieces
Hinweis	passender Monitorhalter siehe Seite 575	Tip	Compatible monitor mount see page 575



Adapterplatte 40 höhenverstellbar Adapter Plate 40 Height Adjustable	N	Gewicht [g] Weight [g]	Profil Profile	Teil-Nr. Part #
	8	64.0	I	061SAP40H

FRICION JOINTS FOR SYSTEM ARMS

FATH Friction Joints: Endless possibilities for your assembly workstations



- Fixed friction torque in 6 levels
- Freely adjustable friction torque
- Easy to assemble
- Can be mounted lengthwise, crosswise and on the front
- Finished system arms can be adjust multi-dimensionally

HIGHLIGHTS

Build your swivel arms in individual lengths and designs with **FATH** Friction Joints. The joints feature a permanently set friction torque that is available in 6 levels. Combine the different friction torques to adapt your system arm to your application. Versions with freely adjustable friction torque are also available. You can adjust the friction with a clamping lever or simple tool exactly as your application requires – virtually continuously from light to strong.

The axes of the **FATH** Friction Joints can be positioned both vertically and horizontally. This opens up a wide range of new possibilities for making tools and work materials available in an ergonomic and organized manner. By a simple turning, the finished system arm can be adapted multi-dimensionally to different working positions and workpiece, product or body sizes.

FIXED & FREELY ADJUSTABLE FRICION TORQUES



Flexible installation

FATH Friction Joints can be attached to the profile lengthwise, crosswise or on the front. The sets already contain the installation material for lateral attachment with T-slot nuts in profile slot 8 or 10 as well as for front attachment on a profile piece with an M8 core hole. To reduce a $\varnothing 10.2$ mm core hole to thread size M8, you can use a **FATH** Cutting Bush with Shank 09308801.

For installation on flat surfaces, the supplied slot fixing plates are simply omitted.



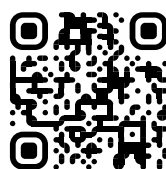
Easy to install and with different versions to suit your needs

Assembling the **FATH** Friction Joints is incredibly easy. The openings for the fixing screws are easily accessible from the outside – simply insert the screws through the joint halves and tighten the profile in the desired position. The mounting holes of the **FATH** Friction Joints are hidden with cover caps.

Optional M8 connection adapter

This stable connection to profiles with slot 8 or slot 10 is ideally suited for the construction of customized solutions. The M8 connection adapter can be attached to the profile both longitudinally and on the front. When using the centering piece, the central M8 screw connection can be secured against twisting. A friction joint half and an assembly set suitable for the profile size are required to install the M8 connection adapter at the end of your system arm.

Available in 7 different versions: with a fixed friction torque of 0.5 Nm, 3 Nm, 6 Nm, 9 Nm, 12 Nm or 15 Nm and with freely adjustable friction torque from light to strong.

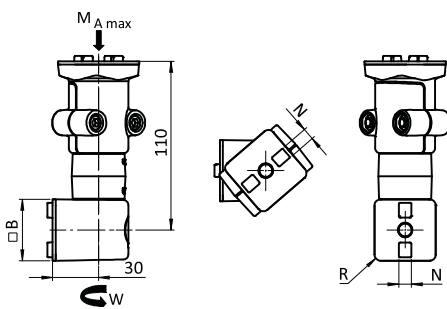


Would you like to learn more about **FATH** Friction Joints?

frictionjoint.fath24.com

END FRICTION JOINT I40L FOR SYSTEM ARM (SET)

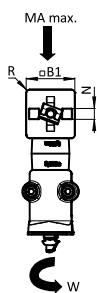
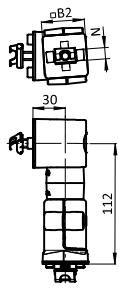
MODEL	40 mm Modular Dimension
DESCRIPTION	Connection joint with friction for the creation of system arms using profile pieces; pivotable 360°; End side can be attached lateral or transverse on the profile slot, friction axis is positioned at right angles to the profile; Friction joint side can be attached lateral, transverse, or on the face of the profile; if attached on the front face, the core hole of the respective profile must be M8 threaded (min. 15 mm deep)
MATERIAL	Housing: Aluminum die-cast Cover ring: Plastic Inserts: Steel Friction shaft: Steel Cover caps: Plastic Screws: Steel Washers: Steel Centering plates: Aluminum die-cast T-slot nuts: Steel
SURFACE	Housing: Laquered Centering plates: Laquered Screws: Zinc plated Washers: Zinc plated T-slot nuts: Zinc plated
COLOR	Housing: Alu color Cover ring: Gray ≈ RAL 7042 Cover caps: Gray ≈ RAL 7042 Centering plates: Alu color
SET	1 end friction joint 1 cover cap, 1 screw DIN EN ISO 4762 (DIN 912) - M8 x 45 (for T-slot nut friction joint side), 1 screw DIN EN ISO 4762 (DIN 912) - M8 x 25 (for T-slot nut end side), 1 screw DIN EN ISO 4762 (DIN 912) - M8 x 50 (for core hole friction joint side), 1 screw DIN EN ISO 4762 (DIN 912) - M8 x 30 (for core hole end side), 2 washers 8-FSt, 2 centering plates, 2 T-slot nuts - slot 8 - M8
PACK QUANTITY	1 set



W [Nm]	MA _{MAX} [Nm]	B [mm]	R [mm]	N	WEIGHT [g]	PROFILE	PART #
0.5	45.0	40	4.0	8	758.6	I	061FAZ40LN08
3	45.0	40	4.0	8	759.6	I	061FAN40LN08
6	45.0	40	4.0	8	761.6	I	061FAS40LN08
9	45.0	40	4.0	8	762.6	I	061FAM40LN08
12	45.0	40	4.0	8	764.6	I	061FAB40LN08
15	45.0	40	4.0	8	765.6	I	061FAL40LN08

END FRICTION JOINT B45-B45L FOR SYSTEM ARM (SET)

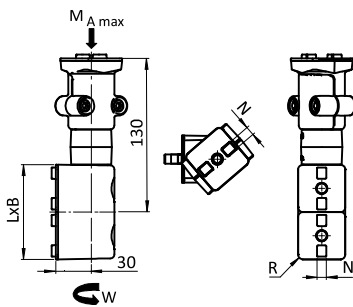
MODEL	45 to 40 mm Modular Dimension
DESCRIPTION	Connection joint with friction for the creation of system arms using profile pieces; pivotable 360°; End side can be attached lateral or transverse on the profile slot, friction axis is positioned at right angles to the profile; Friction joint side can be attached lateral, transverse, or on the face of the profile; if attached on the front face, the core hole of the respective profile must be M8 threaded (min. 20 mm deep)
MATERIAL	Housing: Aluminum die-cast Cover ring: Plastic Inserts: Steel Friction shaft: Steel Cover caps: Plastic Screws: Steel Washers: Steel Centering plates: Aluminum die-cast T-slot nuts: Steel
SURFACE	Housing: Laquered Centering plates: Laquered Screws: Zinc plated Washers: Zinc plated T-slot nuts: Zinc plated
COLOR	Housing: Alu color Cover ring: Gray ≈ RAL 7042 Cover caps: Gray ≈ RAL 7042 Centering plates: Alu color
SET	1 end friction joint 1 cover cap, 1 screw DIN EN ISO 4762 (DIN 912) - M8 x 45 (for T-slot nut friction joint side), 1 screw DIN EN ISO 4762 (DIN 912) - M8 x 25 (for T-slot nut end side), 1 screw DIN EN ISO 4762 (DIN 912) - M8 x 50 (for core hole friction joint side), 1 screw DIN EN ISO 4762 (DIN 912) - M8 x 30 (for core hole end side), 2 washers 8-FSt, 1 centering plate - slot 10 - 45 x 45, 1 centering plate - slot 10 - 40 x 40, 2 T-slot nuts - slot 10 - M8
PACK QUANTITY	1 set



W [Nm]	MA _{MAX} [Nm]	R [mm]	N	B1 [mm]	B2 [mm]	WEIGHT [g]	PROFILE	PART #
0.5	45.0	3.0	10	45	40	761.2	B	061FAZ4540LN10
3.0	45.0	3.0	10	45	40	771.7	B	061FAN4540LN10
6.0	45.0	3.0	10	45	40	773.2	B	061FAS4540LN10
9.0	45.0	3.0	10	45	40	774.6	B	061FAM4540LN10
12.0	45.0	3.0	10	45	40	776.1	B	061FAB4540LN10
15	45.0	3.0	10	45	40	777.6	B	061FAL4540LN10

END FRICTION JOINT I80L FOR SYSTEM ARM (SET)

MODEL	40 mm Modular Dimension
DESCRIPTION	Connection joint with friction for the creation of system arms using profile pieces; pivotable 360°; End side can be attached lateral or transverse on the profile slot, friction axis is positioned at right angles to the profile; Friction joint side can be attached lateral, transverse, or on the face of the profile; if attached on the front face, the core hole of the respective profile must be M8 threaded (min. 15 mm deep)
MATERIAL	Housing: Aluminum die-cast Cover ring: Plastic Inserts: Steel Friction shaft: Steel Cover caps: Plastic Screws: Steel Washers: Steel Centering plates: Aluminum die-cast T-slot nuts: Steel
SURFACE	Housing: Laquered Centering plates: Laquered Screws: Zinc plated Washers: Zinc plated T-slot nuts: Zinc plated
COLOR	Housing: Alu color Cover ring: Gray ≈ RAL 7042 Cover caps: Gray ≈ RAL 7042 Centering plates: Alu color
SET	1 end friction joint 2 cover caps, 2 screws DIN EN ISO 4762 (DIN 912) - M8 x 45 (for T-slot nut friction joint side), 2 screws DIN EN ISO 4762 (DIN 912) - M8 x 25 (for T-slot nut end side), 1 screw DIN EN ISO 4762 (DIN 912) - M8 x 50 (for core hole friction joint side), 1 screw DIN EN ISO 4762 (DIN 912) - M8 x 30 (for core hole end side), 3 washers 8-FSt, 3 centering plates, 3 T-slot nuts - slot 8 - M8
PACK QUANTITY	1 set



W [Nm]	MA _{MAX} [Nm]	R [mm]	N	L X B [mm]	WEIGHT [g]	PROFILE	PART #
0.5	70.0	4.0	8	80 x 40	1049.5	I	061FAZ80LN08
3	70.0	4.0	8	80 x 40	1051.5	I	061FAN80LN08
6	70.0	4.0	8	80 x 40	1052.5	I	061FAS80LN08
9	70.0	4.0	8	80 x 40	1054.5	I	061FAM80LN08
12	70.0	4.0	8	80 x 40	1055.5	I	061FAB80LN08
15	70.0	4.0	8	80 x 40	1057.5	I	061FAL80LN08

MONITOR MOUNT ZN WITH LOCKING LEVER (SET)

MODEL	Swivelling
DESCRIPTION	To fix flat screens to aluminum profile structures, VESA MIS-D 75/100 compatible, can be adjusted horizontally or vertically for optimum visibility, can be fixed with % locking lever at any angle; with separate locating pins for slot 8 and slot 10
MATERIAL	Monitor mounting plate: Plastic PA, glas fiber reinforced Pivot joint: Zinc die-cast % locking lever: Plastic PA, glas fiber reinforced
SURFACE	Pivot joint: Laquered
COLOR	Monitor mounting plate: Black Pivot joint: Alu colored Locking lever: Black
SET 1	1 monitor mounting plate 1 assembly set for monitor: 4 cylinder head screws M4 x 12, 4 washers 1 pivot joint 40 with locking lever 1 assembly set for profile: 1 screw M8 x 25 (frontal), 1 screw M8 x 16 (lateral), 2 locating pins
SET 2	1 monitor mounting plate 1 assembly set for monitor: 4 cylinder head screws M4 x 12, 4 washers 1 pivot joint 45 with locking lever 1 assembly set for profile: 1 screw M8 x 25 (frontal), 1 screw M8 x 16 (lateral), 2 locating pins
PACK QUANTITY	1 set
SPECIALS	Other colors on request
TIP	Cutting bush for the reduction of the Ø 10.2 mm core hole to thread size M8 see 09308801



SET	N	OPENING ANGLE	WEIGHT [g]	PART #
Set 1	- / 8 / 10	192°	434.0	061SM7510040FS03
Set 2	- / 8 / 10	190°	481.0	061SM7510045FS01