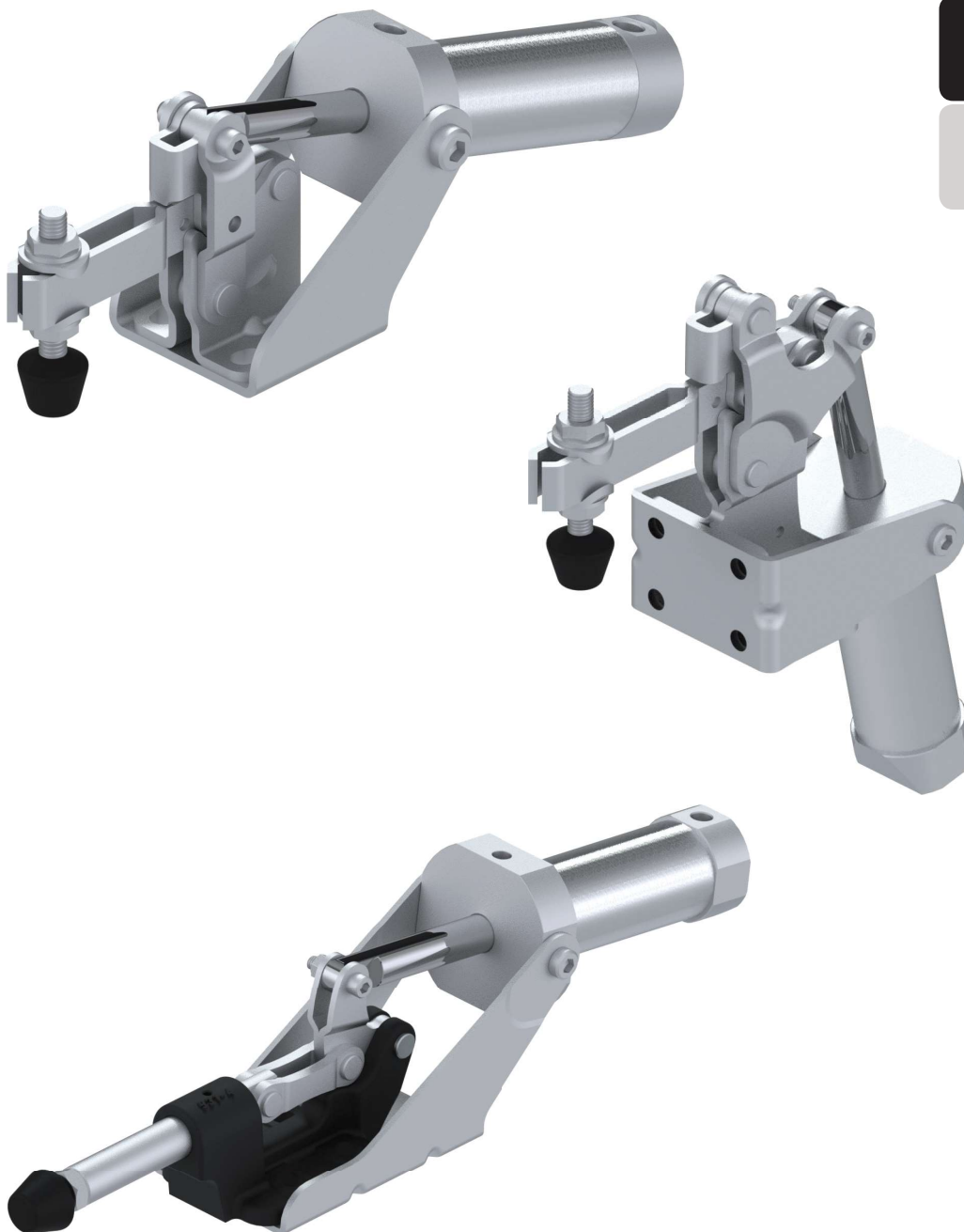


CONTENT OVERVIEW



Manual Toggle Clamps 1

Pneumatic Toggle Clamps 2

Accessories 3

TOGGLE CLAMP WITH HORIZONTAL BASE

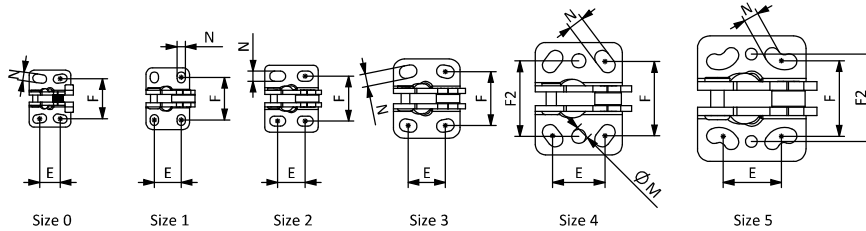
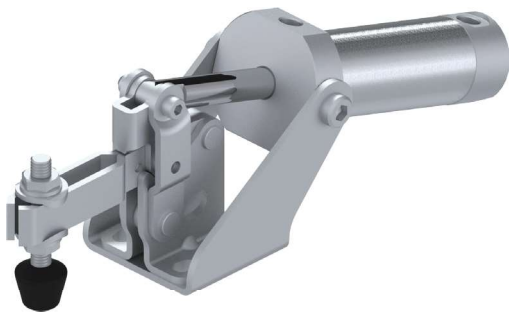
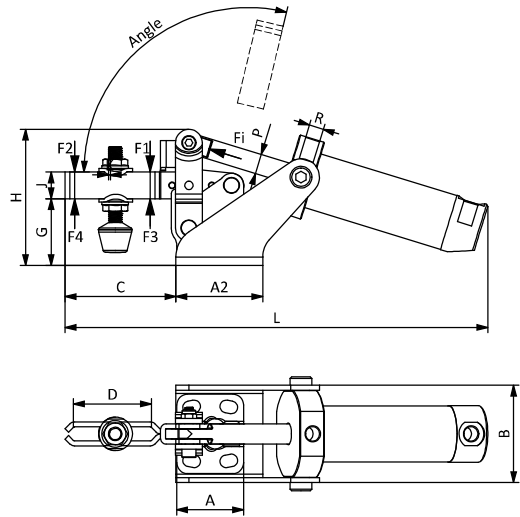
Description For easy and secure fixation of workpieces; operated by compressed air; double acting magnetic cylinders with air cushion
Base position: horizontal

Material Clamp mechanism: Steel
Cylinder: Aluminum / Stainless steel
Rivets: Stainless steel SS304
Clamping rubber: Silicone free NR

Surface Clamp mechanism: Zinc plated
Cylinder: Anodized / Brushed

Color Clamping rubber: Black

Pack Quantity 1 piece



Size	A [mm]	A2 [mm]	B [mm]	C [mm]	D [mm]	E [mm]	F [mm]	F2 [mm]	G [mm]	H [mm]	J [mm]	K [mm]	L [mm]	M [mm]	N [mm]	X1 [mm]	X2 [mm]	P [mm]	R [mm]	Cylinder
1 Ø16	26	34	44	42	26	16	24 - 27	25,5	25	52	10	M5	185	Ø5	5 x 6,5	16	32	Ø6	M5	Ø16
1 Ø20	26	34	44	44	26	16	24 - 27	25,5	25	52	10	M5	192	Ø5	5 x 6,5	16	32	Ø8	G1/8	Ø20
2	32	42	51	60	42	13 - 20	27	27	29	61	13	M6	225	Ø4	6 x 9,5	18	48	Ø10	G1/8	Ø25
3	40	52	58	66,5	42	19 - 25	31,5-32,5	32,3	40	81,5	16	M8	253,5	Ø5	7,5 x 10,5	25	52	Ø12	G1/8	Ø32
4	52	95	77	98,5	67	28 - 34,5	40-48,5	45,2	50	104	20	M10	323	Ø5	9 x 14,5	32	80	Ø16	G1/8	Ø40
5	65	134	92	124	88	24,5 - 45	44,5 - 52	52	62	128	25	M12	399	Ø6	9 x 19,5	36	101	Ø20	G1/8	Ø50

Size	F1 [N]	F2 [N]	F3 [N]	F4 [N]	Fi [N]	Vn (dm³)	Angle (± 5°) [°]	Weight 6 bar [g]	Pressure [bar]	Part #
1 Ø16	600	400	1000	680	120	0,09	95	275	6	041TCPH116V
1 Ø20	750	500	1000	680	190	0,14	95	360	6	041TCPH120V
2	1200	700	1400	925	300	0,25	95	535	6	041TCPH2V
3	2000	1400	2500	1560	500	0,51	95	860	6	041TCPH3V
4	3000	2000	3300	2200	750	1,04	95	1690	6	041TCPH4V
5	4500	2500	5000	3000	1100	2	95	3090	6	041TCPH5V

F1 - F2 : Exerting force, F3 - F4 : Holding capacity, Fi : Applied force

Vn: air consumption per double stroke in dm³ at 6 bar.

TOGGLE CLAMP WITH SIDE BASE

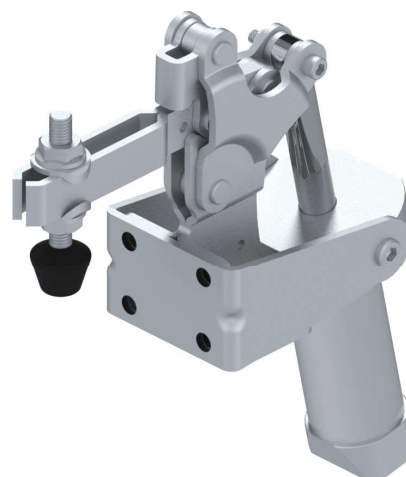
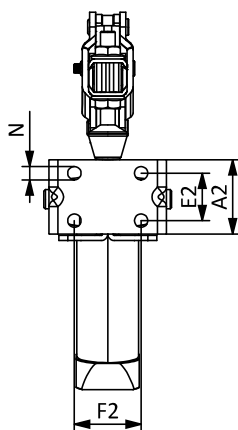
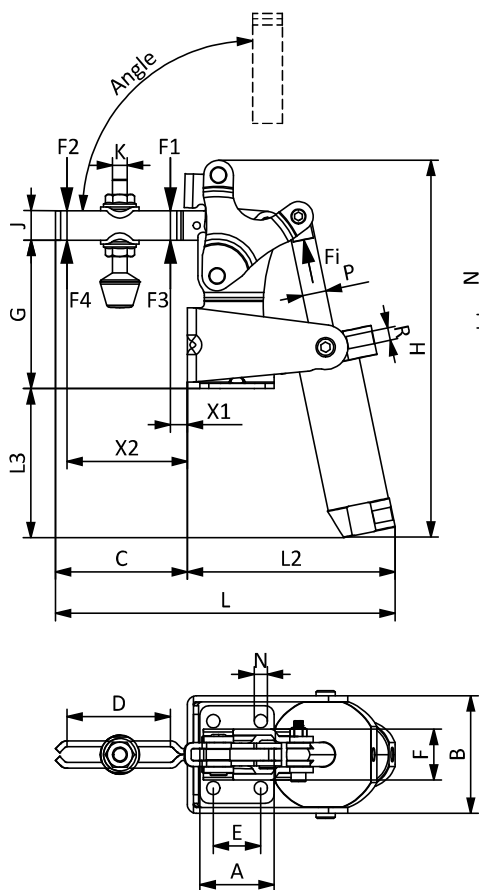
Description For easy and secure fixation of workpieces; operated by compressed air; double acting magnetic cylinders with air cushion
Base position: side

Material Clamp mechanism: Steel
Cylinder: Aluminum / Stainless steel
Rivets: Stainless steel SS304
Clamping rubber: Silicone free NR

Surface Clamp mechanism: Zinc plated
Cylinder: Anodized / Brushed

Color Clamping rubber: Black

Pack Quantity 1 piece



2

Size	A [mm]	A2 [mm]	B [mm]	C [mm]	D [mm]	E [mm]	E2 [mm]	F [mm]	F2 [mm]	G [mm]	H [mm]	J [mm]	K [mm]	L [mm]	L2 [mm]	L3 [mm]	N [mm]	X1 [mm]	X2 [mm]	P [mm]	R [mm]	Cylinder
2	26	26	51	54	42	12,5	12,5	25 - 29	25 - 29	65	180	13	M6	146	92	82	6 x 8	12	42	Ø10	G1/8	Ø25
3	32	32	60	57	42	16	16	23,5 - 27,5	23,5 - 27,5	70,5	210	16	M8	164	106	98	7 x 9	15	42	Ø12	G1/8	Ø32
4	50	50	79	89	67	32	32	45	45	100	255	20	M10	230	141	101	9	22	70	Ø16	G1/8	Ø40
5	65	65	91	113	94	41,5	41,5	57	57	130	311	25	M12	286	172	114	11	25	91	Ø20	G1/8	Ø50

Size	F1 [N]	F2 [N]	F3 [N]	F4 [N]	Fi [N]	Vn (dm³)	Angle (± 5°) [°]	Weight 6 bar [g]	Pressure [bar]	Part #
2	1200	700	1400	925	300	0,25	90	570	6	041TCPS2V
3	2000	1400	2500	1560	500	0,51	90	910	6	041TCPS3V
4	3000	2000	3300	2200	750	1,04	90	1945	6	041TCPS4V
5	4500	2500	5000	3000	1100	2	90	3678	6	041TCPS5V

F1 - F2 : Exerting force, F3 - F4 : Holding capacity, Fi : Applied force

Vn : air consumption per double stroke in dm³ at 6 bar

PUSH-PULL TOGGLE CLAMP

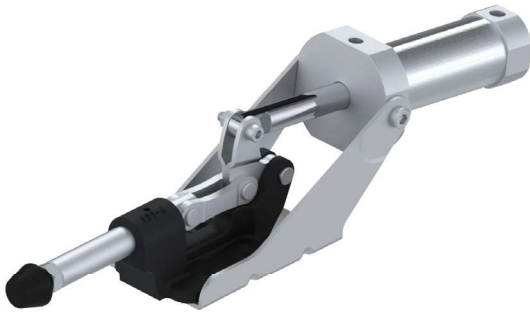
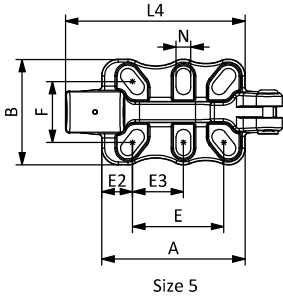
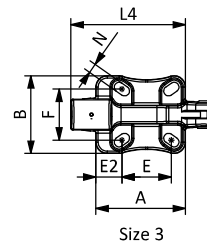
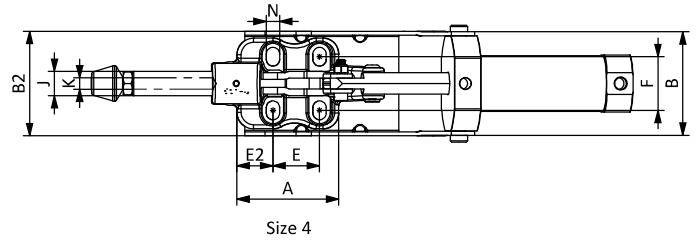
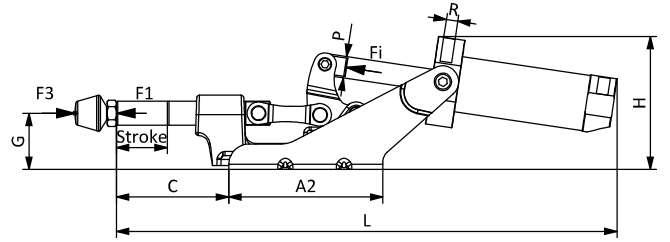
Description For easy and secure fixation of workpieces with pushing force; operated by compressed air; double acting magnetic cylinders with air cushion
Base position: horizontal

Material Clamp mechanism: Cast steel (EN-GJS-600-3) / Steel
Cylinder: Aluminum / Stainless steel
Rivets: Stainless steel SS304
Clamping rubber: Silicone free NR

Surface Clamp mechanism: Powder coated / Zinc plated
Cylinder: Anodized / Brushed

Color Clamp body: Black
Clamping rubber: Black

Pack Quantity 1 piece



Size	A [mm]	A2 [mm]	B [mm]	B2 [mm]	C [mm]	E [mm]	E2 [mm]	F [mm]	G [mm]	H [mm]	J [mm]	K [mm]	L [mm]	N [mm]	P [mm]	R [mm]	Cylinder
3 Ø14	67	100	58	68	70	32,5 - 41	17,5 - 21,5	35 - 41	35	79	14	M8	312	7 x 12	Ø12	G1/8	Ø32
4 Ø18	76	115	77	78	84	34,5	27	36 - 44	42	100	18	M10	372	10 x 14	Ø16	G1/8	Ø40

Size	F1 [N]	F3 [N]	Fi [N]	Vn [dm³]	Stroke [mm]	Weight [g]	Pressure [bar]	Part #
3 Ø14	2500	4000	500	0,51	23	1250	6	041PCPHH314S
4 Ø18	4500	8800	750	1,04	33	2140	6	041PCPHH418S

F1: Exerting force, F3 : Holding capacity, Fi: Applied force

Vn: air consumption per double stroke in dm³ at 6 bar.