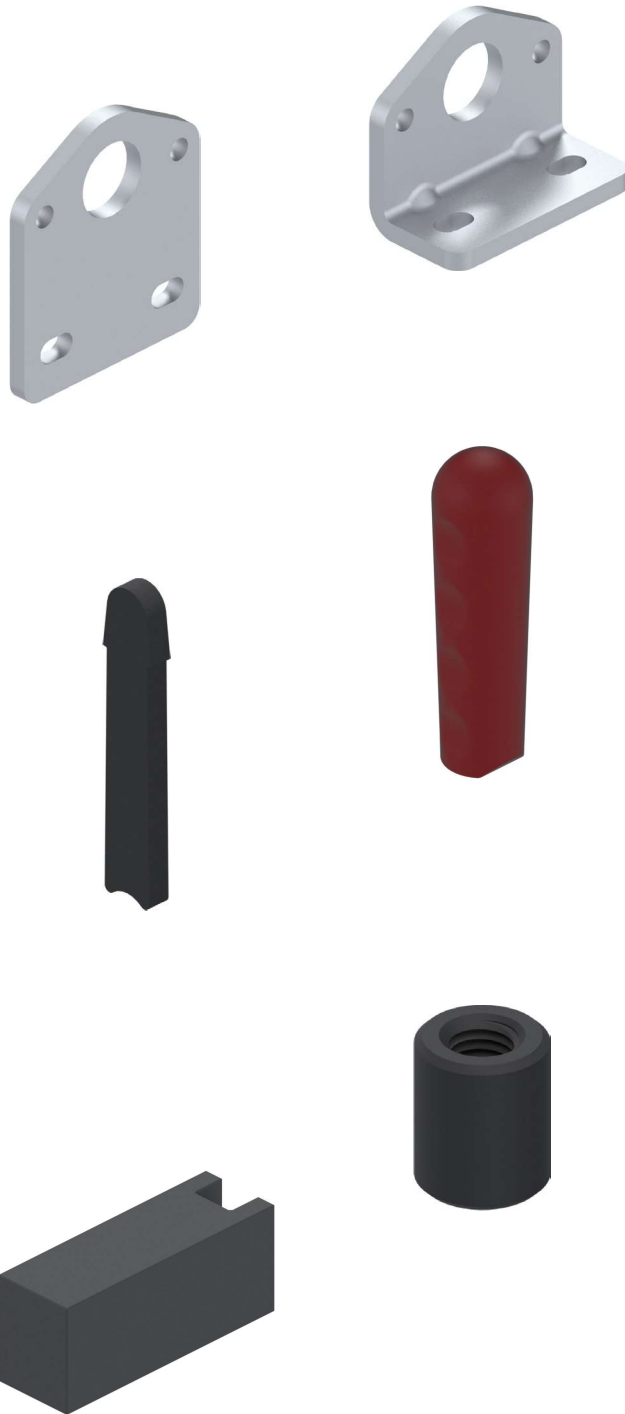


CONTENT OVERVIEW



Manual Toggle Clamps 1

Pneumatic Toggle Clamps 2

Accessories 3



HANDLE BAR

Description Handle bar for Modular toggle clamps

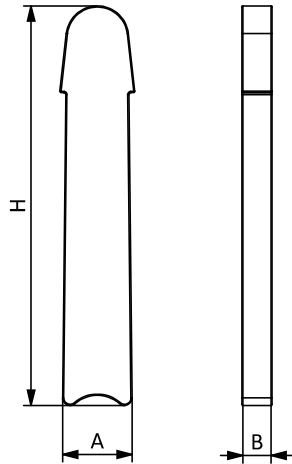
Material Steel

Surface Black passivated

Color Black

Pack Quantity 1 piece

Tip Compatible handles see page 38
Compatible toggle clamps see page 20 et sq.



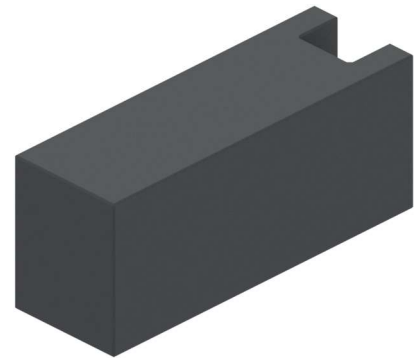
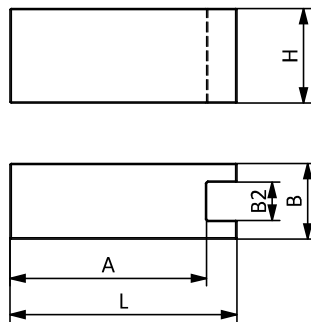
3

Size	A [mm]	B [mm]	H [mm]	Part #
2	11	5	66	041TCAM2AS
4	18	8	105	041TCAM4AS
6	18	10	114	041TCAM6AS



CLAMPING ARM

Description Clamping arm for Modular toggle clamps
Material Steel
Surface Black passivated
Color Black
Pack Quantity 1 piece
Tip Compatible toggle clamps see page 20 et sq.
 Compatible threaded sleeves see page 37



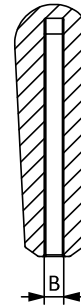
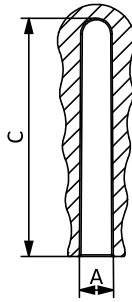
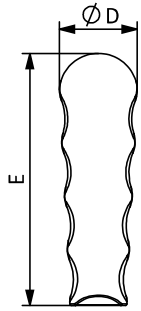
3

Size	A [mm]	B [mm]	B2 [mm]	L [mm]	H [mm]	Part #
2	32	12	6,5	40	15	041TCAM2CS
4	52	20	10,1	60	25	041TCAM4CS
6	68	25	12,1	80	30	041TCAM6CS



HANDLE

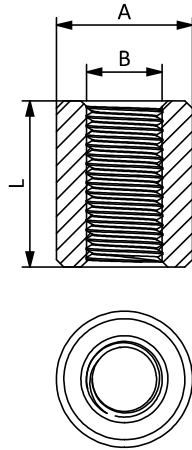
Description Handle for Modular toggle clamps
Material PUR
Color Red
Pack Quantity 1 piece
Tip Compatible handle bars see page 34



Size	A [mm]	B [mm]	C [mm]	D [mm]	E [mm]	Part #
1	11	4	54	17,5	58	041TCAM104HU
2	11	5	54	23	60	041TCAM205HU
3	11	6	74	25	80	041TCAM306HU
4	18	6	94	29	100	041TCAM406HU
5	18	8	94	29	100	041TCAM408HU
6	18	10	94	29	100	041TCAM410HU

THREADED SLEEVE

Description Threaded sleeve for Modular toggle clamps
Material Steel
Surface Black passivated
Color Black
Pack Quantity 1 piece
Tip Compatible clamping arms see page 35



Size	A [mm]	B [mm]	L [mm]	Part #
1	Ø10	M5	12	041TCAM1TS
2	Ø12	M6	15	041TCAM2TS
3	Ø16	M8	18	041TCAM3TS
4	Ø18	M10	22	041TCAM4TS
5	Ø20	M12	27	041TCAM5TS
6	Ø25	M12	32	041TCAM6TS



HORIZONTAL BASE

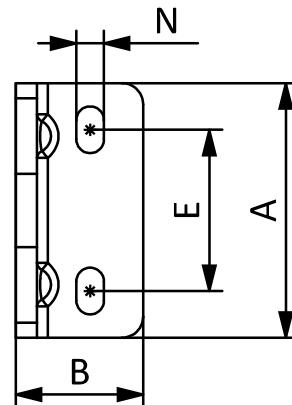
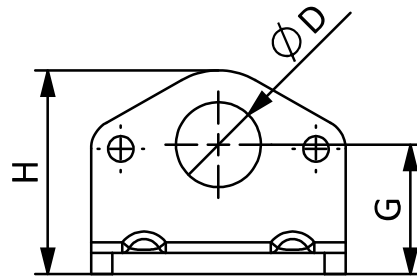
Description Base plate for Push-pull toggle clamps
Base position: horizontal

Material Steel

Surface Zinc plated

Pack Quantity 1 piece

Tip Compatible Toggle clamps see page 26



Size	A [mm]	B [mm]	$\varnothing D$ [mm]	E [mm]	G [mm]	H [mm]	N [mm]	Part #
1	44	20	12,5	21,5 - 31,5	19,5	30,5	5,5 x 10,5	041PCAH1V
2	53	24,5	16,5	30 - 40	24,5	39	6 x 11	041PCAH2V
3	60	30	20,5	33,5 - 42,5	30,5	48	6,5 x 11	041PCAH3V
5	78	36	24,5	42 - 57	38	61	8,5 x 16	041PCAH5V

SIDE BASE

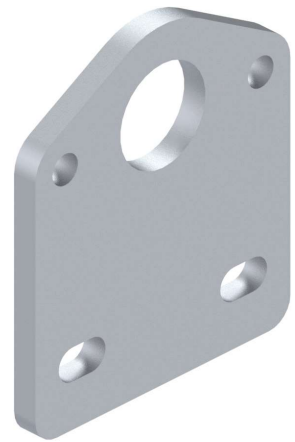
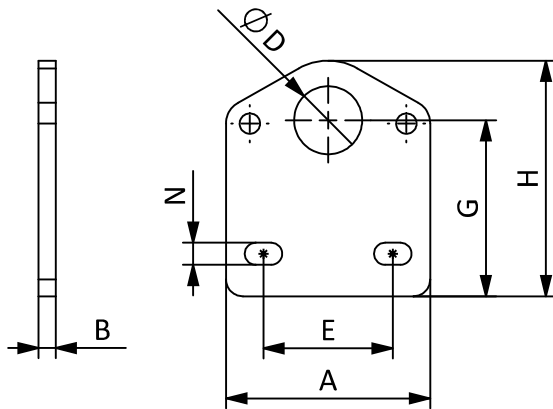
Description Base plate for Push-pull toggle clamps
Base position: side

Material Steel

Surface Zinc plated

Pack Quantity 1 piece

Tip Compatible Toggle clamps see page 26



Size	A [mm]	B [mm]	ØD [mm]	E [mm]	F [mm]	G [mm]	H [mm]	N [mm]	Part #
1	44	3	12,5	21,5 - 31,5	8,5	35	46	5,5 x 10,5	041PCAS1V
2	53	4	16,5	30 - 40	9	42,5	57	6 x 11	041PCAS2V
3	60	5	20,5	33,5 - 42,5	12,5	52	69	6,5 x 11	041PCAS3V
5	78	6	24,5	42 - 57	15	64,5	87,5	8,5 x 16	041PCAS5V