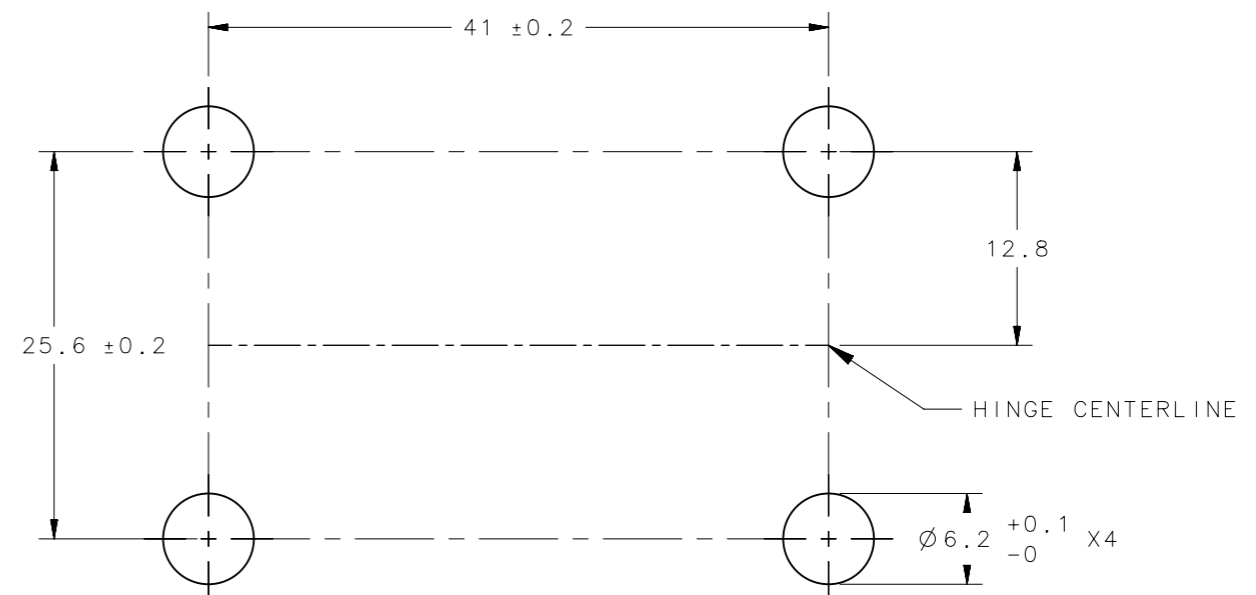
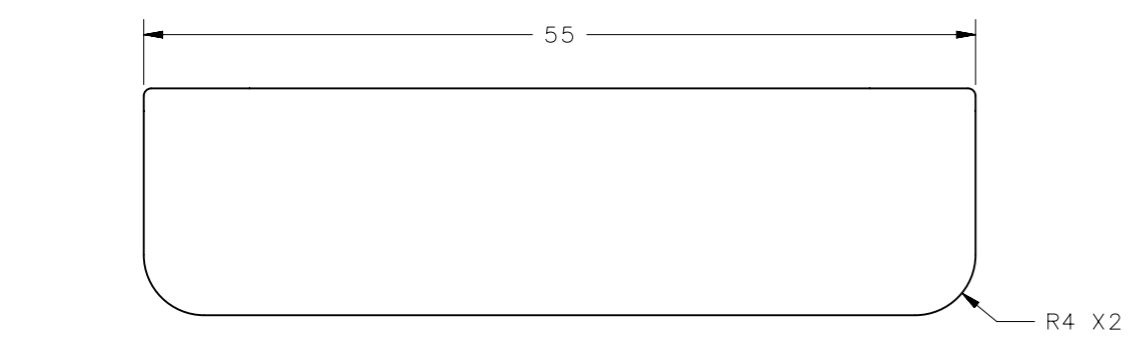
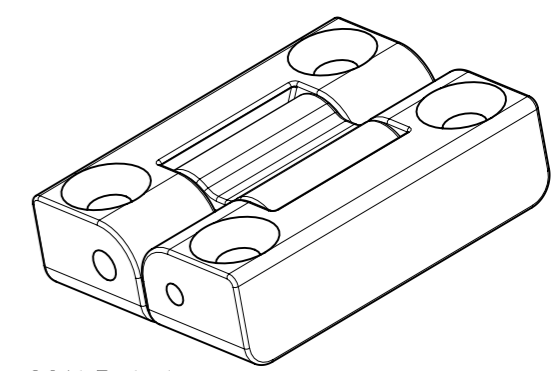
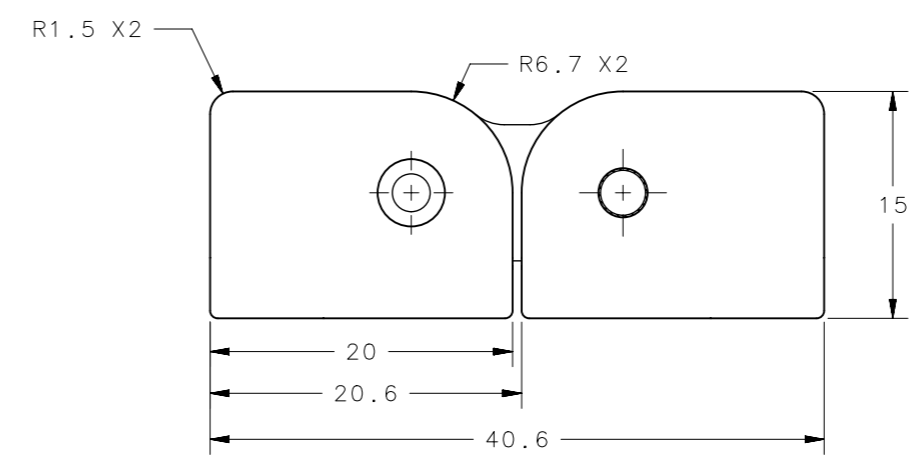
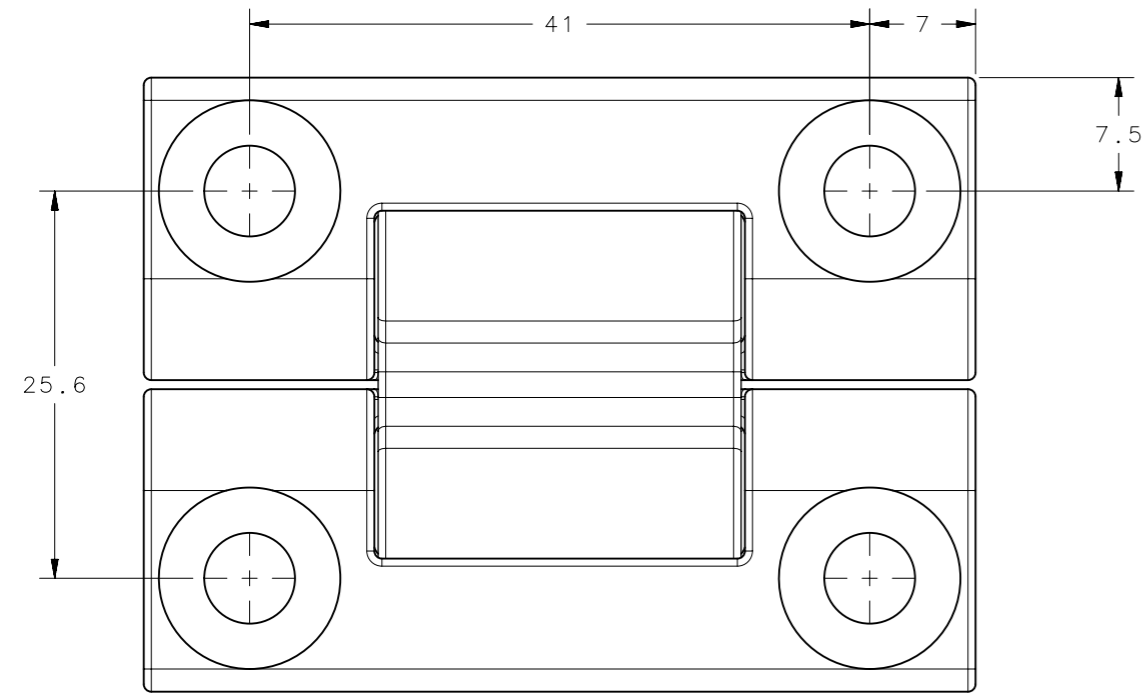


REVISION HISTORY			
REV	DATE	BY	DESCRIPTION
01	05NOV2018	JD/	PRN: DRAWINGS RELEASED FOR QUOTE.



PANEL PREPARATION

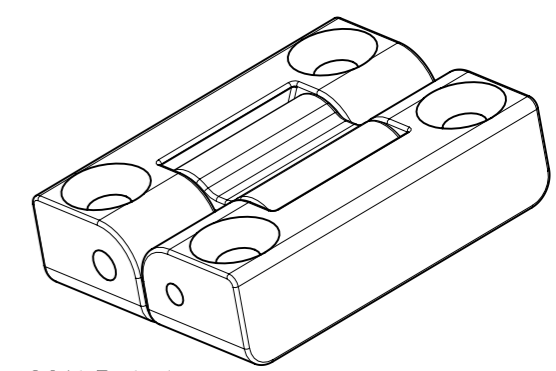
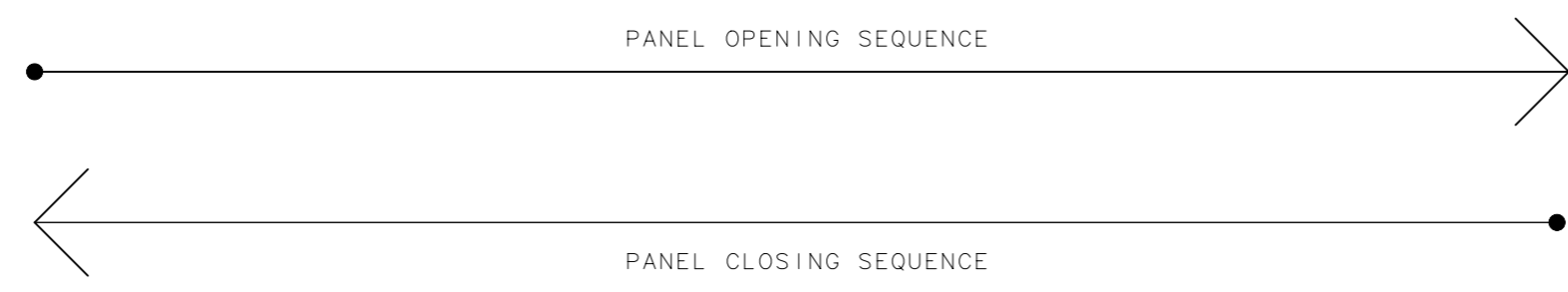
PART NUMBER	FORWARD TORQUE	REVERSE TORQUE
AH-2E-2000A2-XX	FREE OPERATING	
AH-2E-2012A2-XX	1.4 N-m (12.0 in-lbs)	0.8 N-m (7.2 in-lbs) (REF)
AH-2E-2016A2-XX	1.8 N-m (16.0 in-lbs)	1.1 N-m (9.6 in-lbs) (REF)
AH-2E-2020A2-XX	2.3 N-m (20.0 in-lbs)	1.4 N-m (12.0 in-lbs) (REF)
AH-2E-2024A2-XX	2.7 N-m (24.0 in-lbs)	1.6 N-m (14 in-lbs) (REF)
PART NUMBER	DESCRIPTION	FINISH
AH-2E-20XXA2-63	ASSEMBLY - AS CAST	NATURAL
AH-2E-20XXA2-51	ASSEMBLY - COATED	BLACK E-COAT

NOTES:

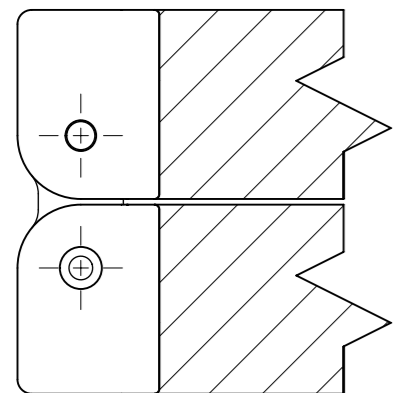
- A. PERFORMANCE TORQUE TOLERANCE ±20%.
- B. DESIGNED TO ACCEPT M6 OR No. 12 SCREW OR EQUIVALENT.
- C. MATERIAL:
 HINGE LEAVES: DIE CAST ALUMINUM, SEE TABLE FOR FINISH,
 SHAFT & PIN: STEEL,
 O-RINGS: BUNA-N RUBBER,
 BEARINGS: DIE CAST ZINC.

CPB NUMBER 2016-1086	THIRD ANGLE PROJECTION	 CONNECT · CREATE · INNOVATE	
	MILLIMETERS [IN]		
	TOLERANCES UNLESS OTHERWISE NOTED	DESCRIPTION 20mm BIFOLD HINGE & CONTROLLED MOTION DEVICE	
	ALL DIMENSIONS WITHOUT TOLERANCES ARE FOR REFERENCE ONLY.	SIZE A3	SYSTEM NX
PROPRIETARY ITEM <small>EXCEPT FOR USES EXPRESSLY GRANTED IN WRITING, INFORMATION DISCLOSED HEREON IS CONFIDENTIAL AND ALL RIGHTS, PATENT AND OTHERWISE, ARE RESERVED BY SOUTHCO, INC.</small>	PER ASME Y14.5M-1994	DWG NO. J-AH-2E-20	DATE 10OCT2018
		DRAWN BY JD	SCALE 2:1
			SHEET 1 OF 2

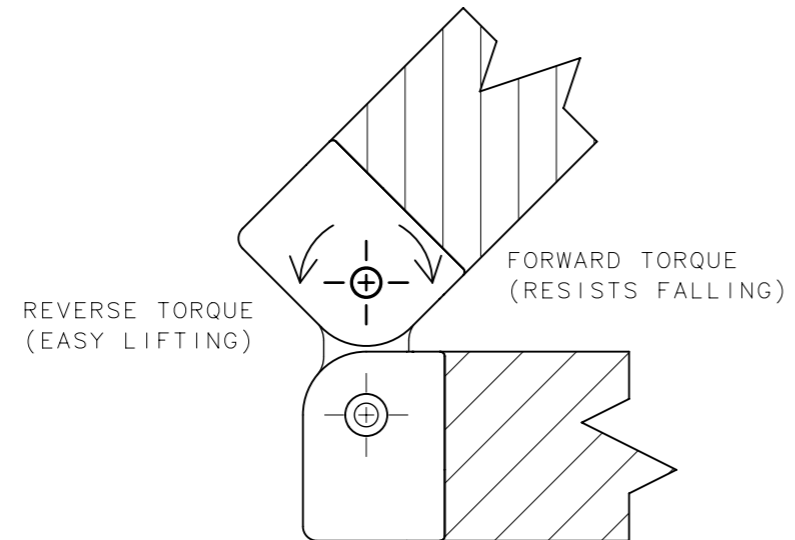
REVISION HISTORY			
REV	DATE	BY	DESCRIPTION
01	05NOV2018	JD/	PRN: DRAWINGS RELEASED FOR QUOTE.



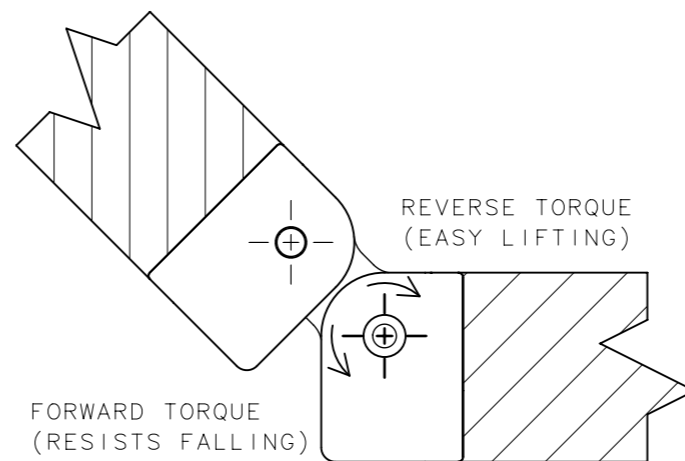
SCALE 1:1



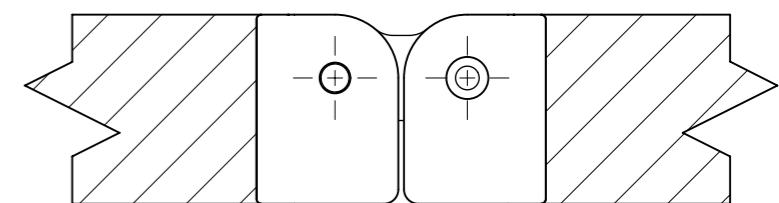
PANEL CLOSED



PANEL 45°



PANEL 135°



PANEL OPEN

PART NUMBER	FORWARD TORQUE	REVERSE TORQUE
AH-2E-2000A2-XX	FREE OPERATING	
AH-2E-2012A2-XX	1.4 N-m (12.0 in-lbs)	0.8 N-m (7.2 in-lbs) (REF)
AH-2E-2016A2-XX	1.8 N-m (16.0 in-lbs)	1.1 N-m (9.6 in-lbs) (REF)
AH-2E-2020A2-XX	2.3 N-m (20.0 in-lbs)	1.4 N-m (12.0 in-lbs) (REF)
AH-2E-2024A2-XX	2.7 N-m (24.0 in-lbs)	1.6 N-m (14 in-lbs) (REF)
PART NUMBER	DESCRIPTION	FINISH
AH-2E-20XXA2-63	ASSEMBLY - AS CAST	NATURAL
AH-2E-20XXA2-51	ASSEMBLY - COATED	BLACK E-COAT

NOTES:

A. PERFORMANCE TORQUE TOLERANCE $\pm 20\%$.

B. DESIGNED TO ACCEPT M6 OR No. 12 SCREW OR EQUIVALENT.

C. MATERIAL:
 HINGE LEAVES: DIE CAST ALUMINUM, SEE TABLE FOR FINISH,
 SHAFT & PIN: STEEL,
 O-RINGS: BUNA-N RUBBER,
 BEARINGS: DIE CAST ZINC.

CPB NUMBER 2016-1086	THIRD ANGLE PROJECTION	southco [®] CONNECT • CREATE • INNOVATE
	MILLIMETERS [IN]	
	TOLERANCES UNLESS OTHERWISE NOTED	DESCRIPTION 20mm BIFOLD HINGE & CONTROLLED MOTION DEVICE
	ALL DIMENSIONS WITHOUT TOLERANCES ARE FOR REFERENCE ONLY.	SIZE SYSTEM A3 NX
PROPRIETARY ITEM <small>EXCEPT FOR USES EXPRESSLY GRANTED IN WRITING, INFORMATION DISCLOSED HEREON IS CONFIDENTIAL AND ALL RIGHTS, PATENT AND OTHERWISE, ARE RESERVED BY SOUTHCO, INC.</small>	PER ASME Y14.5M-1994	DWG NO. J-AH-2E-20
	DRAWN BY JD	DATE 10OCT2018
		SCALE 2:1
		SHEET 2 OF 2