

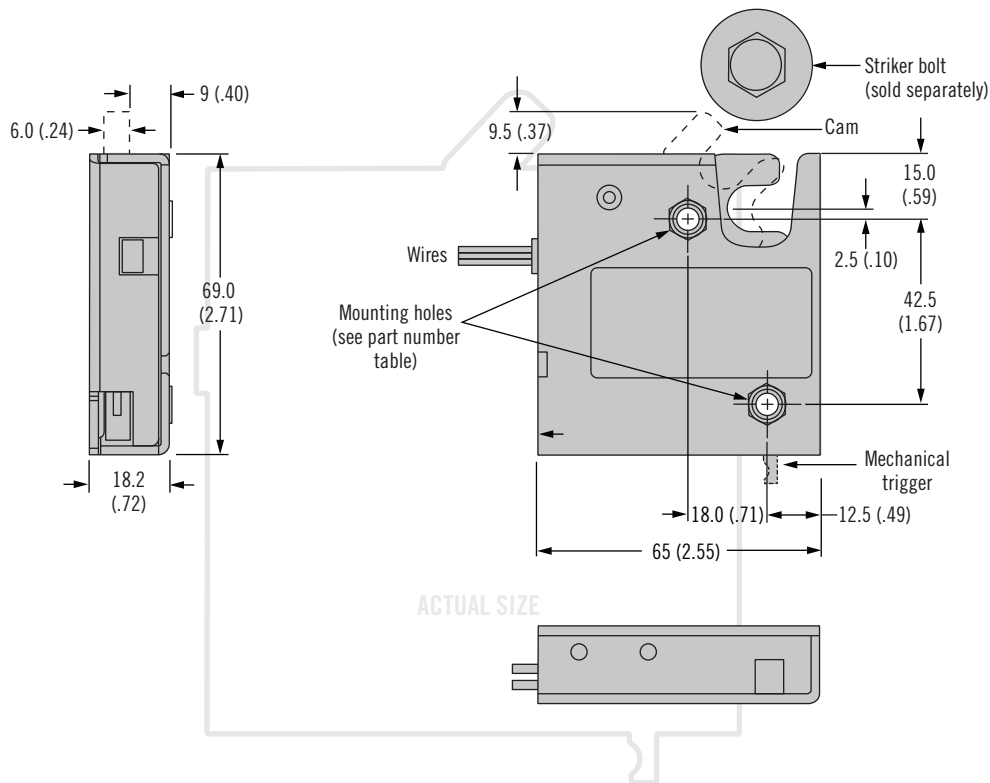
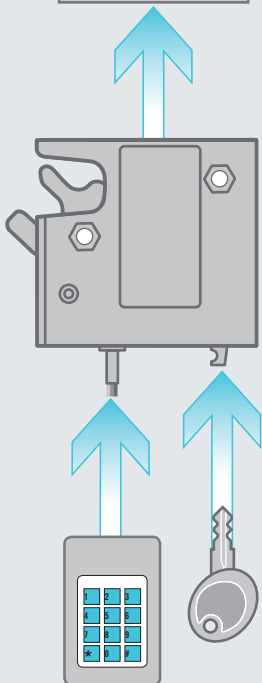


R4-EM 1 & 2 Series Electronic Rotary Latch

All-metal construction

Electronic access with internal motor control

- High strength, steel construction
- Operates against high mechanical loads
- Push-to-close, electronic release
- Versatile rotary mechanism
- Concealed latching
- Microprocessor control
- Minimal power draw
- Simple mechanical override
- Optional internal microswitch for latch open/close output signal

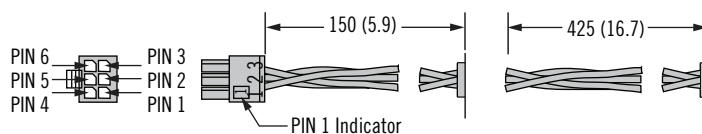


Latch Wiring Connections

With connector

Molex Microfit 3.0 series

Without connector



Part Number Selection

R4 - EM - T B A - 1 S C - P

T Trigger Styles

- 1 Auto relock, side trigger, with kick-out spring
- 2 Delayed relock, side trigger, with light spring
- R1 Auto relock, rear trigger, with kick-out spring
- R2 Delayed relock, rear trigger, with light spring

B Base Mounting Style

- 1 1/4 - 20 thread
- 2 M6 thread
- 3 Ø 7.0 (.27) thru hole

A Alternate Configurations

- None Standard configuration
- 2 Strong (kick out) cam spring (delayed relock)
 - 3 High strength cam
 - 4 High strength cam with strong (kick out) cam spring (delayed relock)

P Packaging Options

- None Individually packaged
- 1 Bulk packaged

C Connector Options

- 1 With connector
- 2 Without connector

S Switch Options

- 3 No switch
- 6 Internal latch status switch

Other options available. For complete details on variety, part numbers, installation and specification, go to



www.southco.com/R4-EM

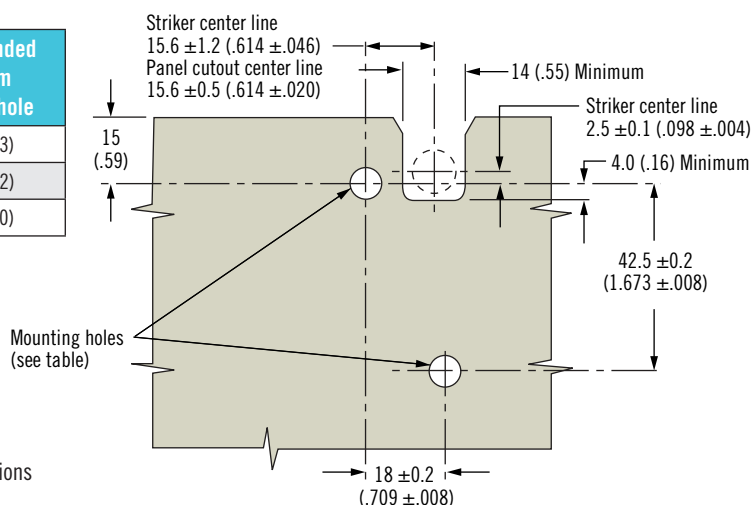
Dimensions in millimeters (inch) unless otherwise stated

southco
CONNECT · CREATE · INNOVATE

Installation

Panel Preparation

Base Mounting Style	Recommended minimum mounting hole
1/4-20 thread	Ø 7.2 (.283)
M6 thread	Ø 6.9 (.272)
Thru hole	Ø 7.6 (.300)



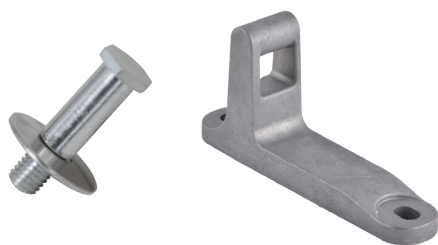
Operation

See page 34 for operating instructions

Accessories

Striker Bolt or Cast Striker

See page 35



Cable Mounting Kit

See page 35



Material & Finish

Mechanism

Housing: Steel, zinc plated
Cam, trigger: Steel, zinc plated
Springs: 300 Series stainless steel
Pins: Steel, zinc plated
Electronic Actuator:
Housing: PC/ABS
Cam / follower: Acetal

Electrical Specifications

Recommended Operating Voltage:
12 to 24 Volt DC
Typical Operating Current: Less
than 500mA at 12 VDC
Peak/Stall Operating Current: 1 A
Standby Current: 185uA
Input Signal Current Draw: 25mA
**Optional microswitch closes
upon latch closure
Microswitch Rating: 3A at
12VDC Maximum

Wire Color Code / Connector

Pin Assignment:

PIN 1: Brown: Ground (-)
PIN 2: Red: Power 8 to 26 Volts DC
PIN 3: Orange: Control Signal
8 to 26 Volts DC
PIN 4: Black: Microswitch Common
PIN 5: Blue: Microswitch N.O.
Contact
PIN 6: Grey: Microswitch N.C.
Contact

Other options available. For complete details
on variety, part numbers, installation and
specification, go to



www.southco.com/R4-EM

Electronic Actuators

See page 42



Mechanical Actuators

See page 36



Cables

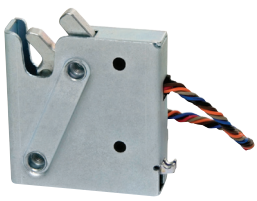
See page 272



Wiring/Junctions

See www.southco.com



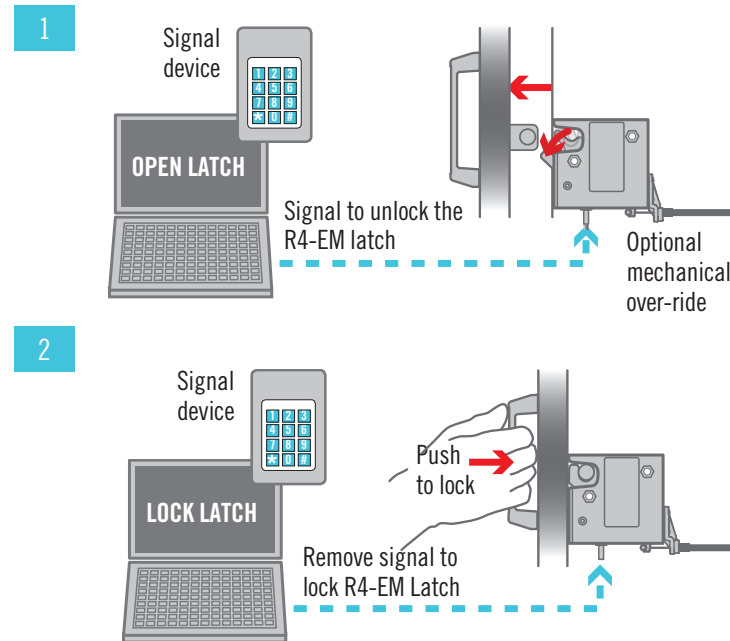


R4-EM Electronic Rotary Latch

Operating instructions

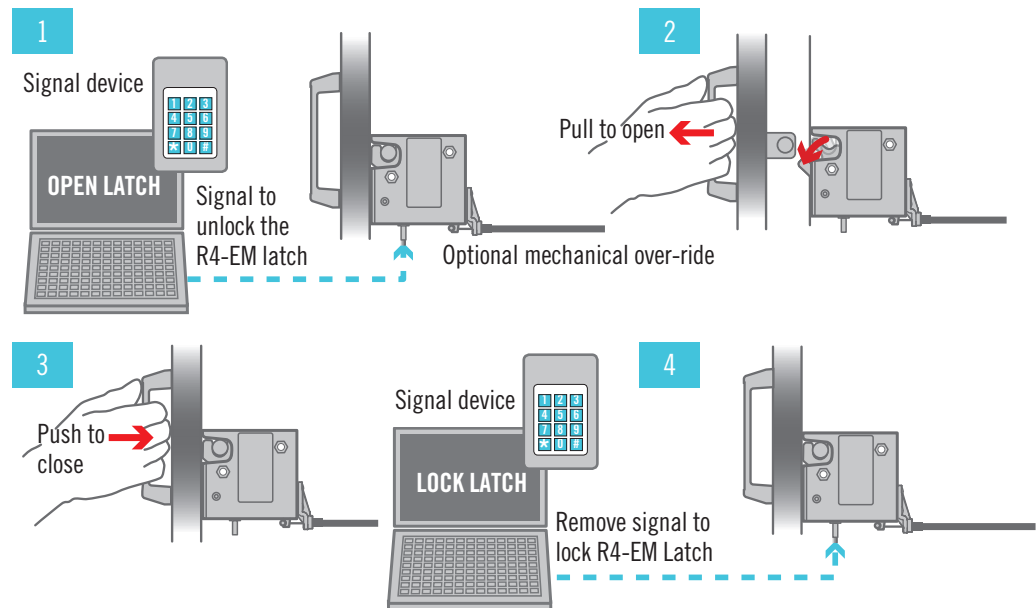
Operation - Auto relock

1. The signal unlocks the R4-EM latch and releases the spring loaded cam which rotates out to push a lightweight door open. The mechanism will cycle through unlatched then relatched state automatically, regardless of input signal on time.
2. Push door closed to engage striker after unlock time has expired. Striker will rotate cam to closed position.



Operation - Delayed relock

1. The signal unlocks the R4-EM latch leaving a biased closed door in the closed position. The unlock time is controlled by the access control device.
2. Manually pull door/striker free from R4-EM latch.
3. Manually push door closed. Striker will rotate cam to closed position, however latch will remain unlocked and can be re-opened as long as signal is present.
4. After accessing the door, the signal can be removed to re-lock the R4-EM. This can be done with the door in the open or closed position.



Other options available. For complete details on variety, part numbers, installation and specification, go to



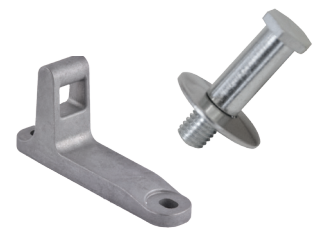
www.southco.com/R4-EM

Dimensions in millimeters (inch) unless otherwise stated

southco
CONNECT · CREATE · INNOVATE

R4-EM Electronic Rotary Latch

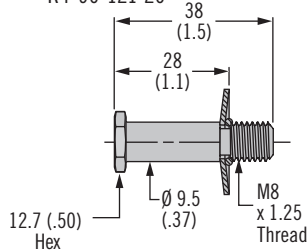
Strikers - Cable mounting kits



35

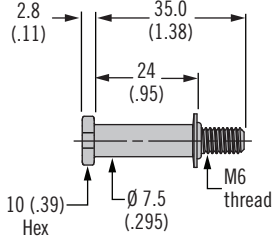
Striker Bolt - Large

Part number R4-90-121-10
R4-90-121-20



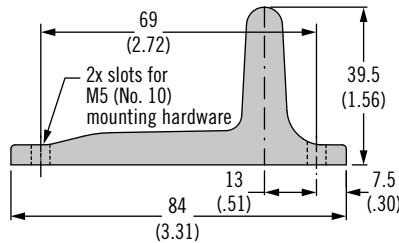
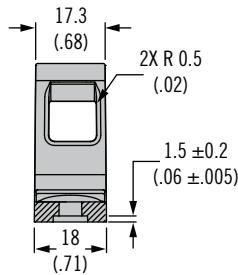
Striker Bolt - Small

Part number R4-90-511-20



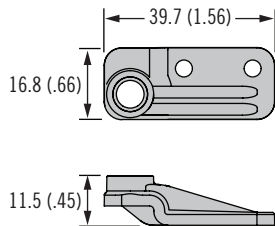
Cast Striker with Door Sensor Part number R4-90-804-10*

Cast Striker without Door Sensor Part number R4-90-800-10*

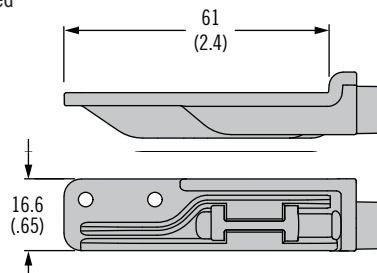


Cable Mounting Kit

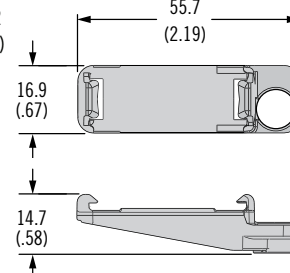
Part number R4-EM-52 – Rivets included
Part number R4-EM-72 – Screws included








Part number R4-EM-87 – Rivets included



Part number R4-EM-952



	Striker Bolt		Cast Striker		Cable Mounting Kit			
	R4-90-121-XX	R4-90-511-20	R4-90-800-10	R4-90-804-10	R4-EM-52	R4-EM-72	R4-EM-87	R4-EM-952
 R4-EM-9	✓		✓	✓				✓
 R4-EM-8	✓		✓	✓				
 R4-EM-5 & 7	✓		✓		✓		✓	
 R4-EM-4 & 6		✓				✓		
 R4-EM-1 & 2	✓		✓		✓		✓	

Material and Finish

Striker bolts: Steel, zinc plated

Cast strikers: Zinc alloy

Cable mounting kits: Glass-filled nylon, black

***Note:** Latch and striker installation details can be found on the latch trade drawing at www.southco.com.

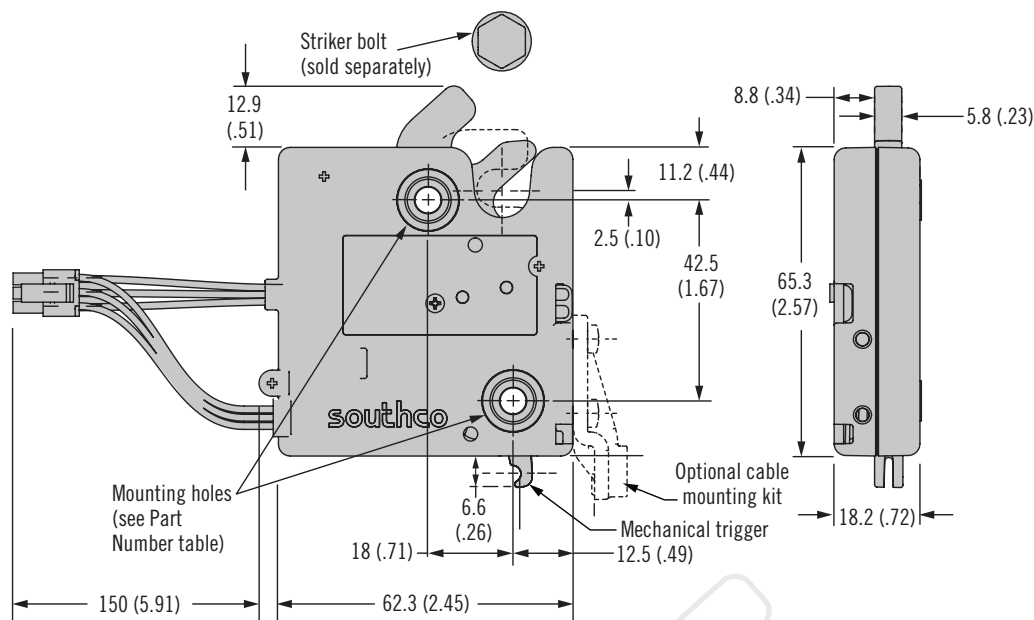
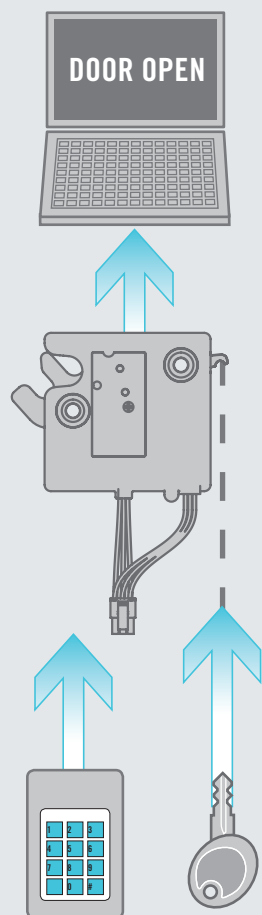


R4-EM 4 & 6 Series Electronic Rotary Latch

Compact size · Lightweight

Electronic access with internal motor control

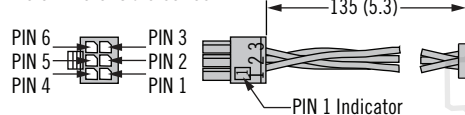
- Light weight construction
- Auto re-lock and delayed re-lock version
- Push-to-close, electronic release
- Versatile rotary mechanism
- Concealed latching
- Microprocessor control
- Minimal power draw
- Simple mechanical over-ride
- Optional internal microswitch for latch open/close output signal



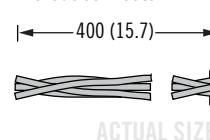
Latch Wiring Connections

With Connector

Molex Microfit 3.0 series



Without connector



Part Number Selection

R4 - EM - T B A - 1 S C - P

T Trigger Styles

- 4 Auto re-lock with kick-out spring
- 6 Delayed re-lock with light spring

B Base Mounting Style

- 3 Ø 5.5 (.22) thru hole
- 4 M5 thread
- 5 10-24 thread

A Alternate Configurations

- None Standard configuration
- 2 Strong (kick out) cam spring (delayed relock)

P Packaging Options

- None Individually packaged
- 1 Bulk packaged

C Connector Options

- 1 With connector
- 2 Without connector

S Switch Options

- 3 No switch
- 6 Internal latch status switch

Other options available. For complete details on variety, part numbers, installation and specification, go to



www.southco.com/R4-EM

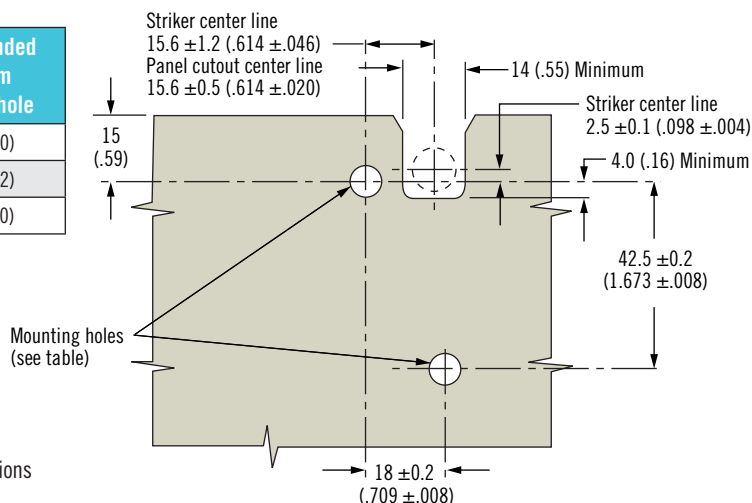
Dimensions in millimeters (inch) unless otherwise stated

southco
CONNECT · CREATE · INNOVATE

Installation

Panel Preparation

Base Mounting Style	Recommended minimum mounting hole
10-24 thread	Ø 5.6 (.220)
M5 thread	Ø 5.9 (.232)
Thru hole	Ø 6.1 (.240)



Operation

See page 34 for operating instructions

Accessories

Striker Bolt

See page 35



Cable Mounting Kit

See page 35



Material & Finish

Housings: PC/ABS

Cam: Glass-filled nylon

Trigger: PBT

Springs: Stainless Steel

Pins: Steel, zinc plated

Electrical Specifications

Recommended Operating Voltage:

12 to 24 VDC

Typical Operating Current (average at no load): Less than 600mA at 12VDC

Input Signal Current Draw: 25mA Maximum

**Optional microswitch closes upon latch closure

Microswitch Rating: 3A Max at 12 VDC

Wire Color Code / Connector Pin Assignment:

PIN 1: Brown: Ground (-)

PIN 2: Red: Power 8 to 26 Volts DC

PIN 3: Orange: Control Signal 8 to 26 Volts DC

PIN 4: Black: Microswitch Common

PIN 5: Blue: Microswitch N.O.

Contact

PIN 6: Grey: Microswitch N.C.

Contact

See www.southco.com

Other options available. For complete details on variety, part numbers, installation and specification, go to



www.southco.com/R4-EM

Electronic Actuators

See page 42



Mechanical Actuators

See page 36



Cables

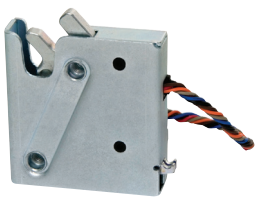
See page 272



Wiring/Junctions

See www.southco.com



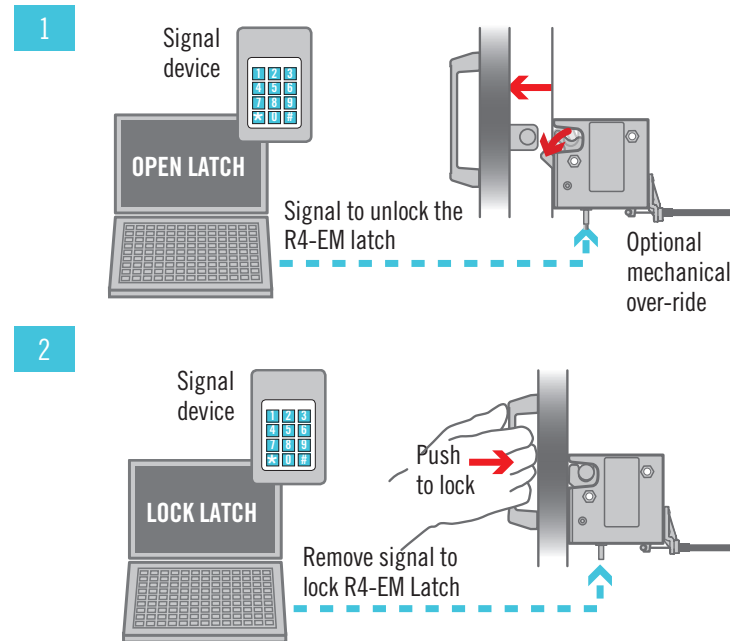


R4-EM Electronic Rotary Latch

Operating instructions

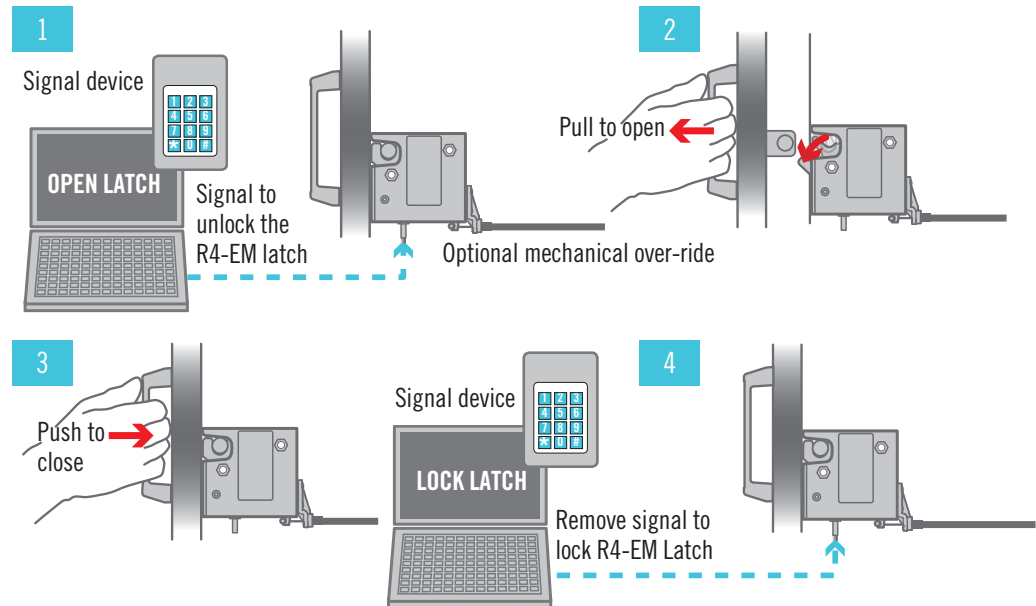
Operation - Auto relock

1. The signal unlocks the R4-EM latch and releases the spring loaded cam which rotates out to push a lightweight door open. The mechanism will cycle through unlatched then relatched state automatically, regardless of input signal on time.
2. Push door closed to engage striker after unlock time has expired. Striker will rotate cam to closed position.



Operation - Delayed relock

1. The signal unlocks the R4-EM latch leaving a biased closed door in the closed position. The unlock time is controlled by the access control device.
2. Manually pull door/striker free from R4-EM latch.
3. Manually push door closed. Striker will rotate cam to closed position, however latch will remain unlocked and can be re-opened as long as signal is present.
4. After accessing the door, the signal can be removed to re-lock the R4-EM. This can be done with the door in the open or closed position.



Other options available. For complete details on variety, part numbers, installation and specification, go to



www.southco.com/R4-EM

Dimensions in millimeters (inch) unless otherwise stated

southco
CONNECT · CREATE · INNOVATE

R4-EM Electronic Rotary Latch

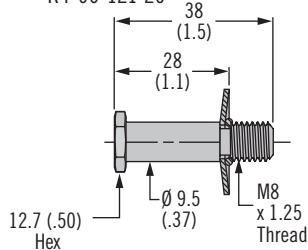
Strikers - Cable mounting kits



35

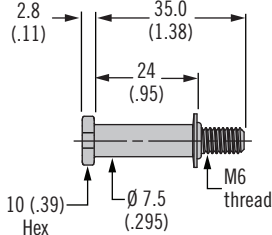
Striker Bolt - Large

Part number R4-90-121-10
R4-90-121-20



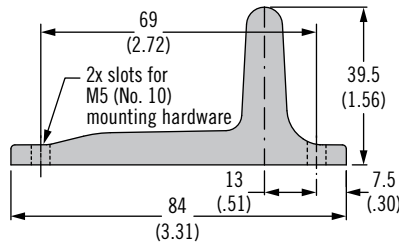
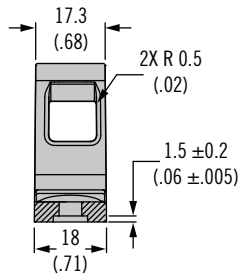
Striker Bolt - Small

Part number R4-90-511-20



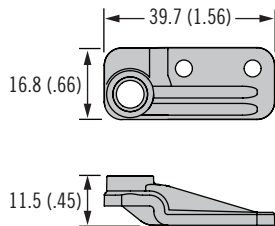
Cast Striker with Door Sensor Part number R4-90-804-10*

Cast Striker without Door Sensor Part number R4-90-800-10*

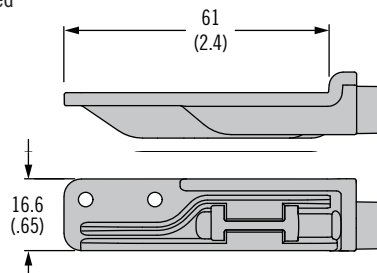


Cable Mounting Kit

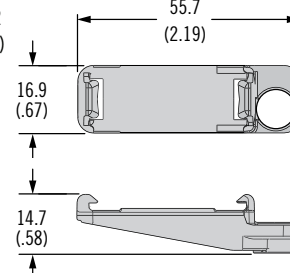
Part number R4-EM-52 – Rivets included
Part number R4-EM-72 – Screws included








Part number R4-EM-87 – Rivets included



Part number R4-EM-952



	Striker Bolt		Cast Striker		Cable Mounting Kit			
	R4-90-121-XX	R4-90-511-20	R4-90-800-10	R4-90-804-10	R4-EM-52	R4-EM-72	R4-EM-87	R4-EM-952
 R4-EM-9	✓		✓	✓				✓
 R4-EM-8	✓		✓	✓				
 R4-EM-5 & 7	✓		✓		✓		✓	
 R4-EM-4 & 6		✓				✓		
 R4-EM-1 & 2	✓		✓		✓		✓	

Material and Finish

Striker bolts: Steel, zinc plated

Cast strikers: Zinc alloy

Cable mounting kits: Glass-filled nylon, black

***Note:** Latch and striker installation details can be found on the latch trade drawing at www.southco.com.

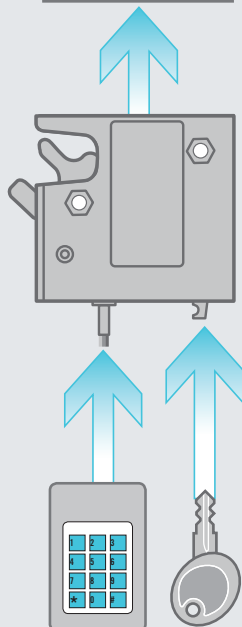


R4-EM 5 & 7 Series Electronic Rotary Latch

Sealed motor · Stainless steel housing option

Electronic access with internal motor control

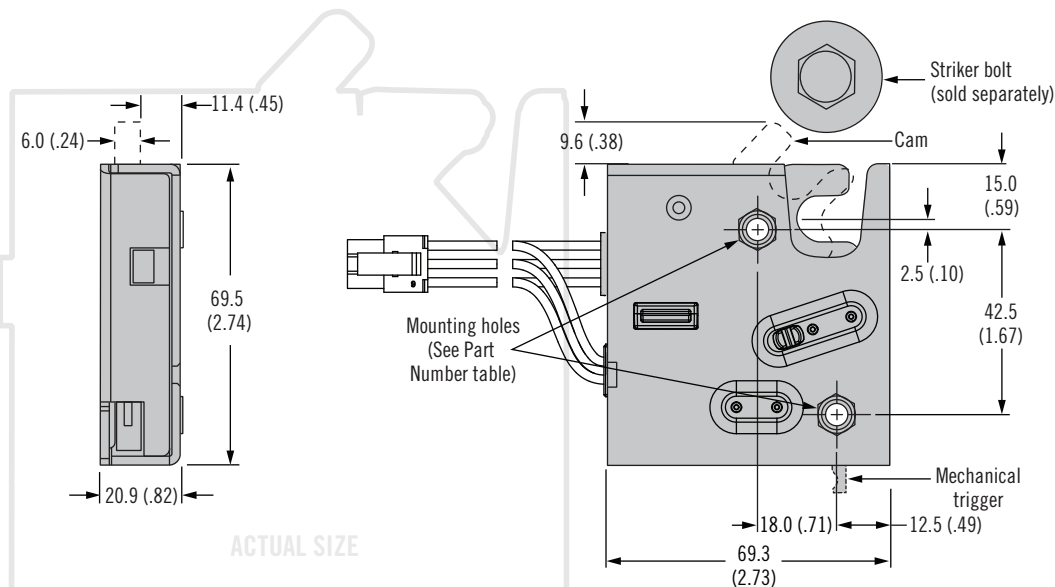
- Motor actuator sealed against water and dust ingress to IP56
- Corrosion resistant plated-steel and stainless steel options
- Push-to-close, electronic release
- Versatile rotary mechanism
- Concealed latching
- Microprocessor control
- Auto or delayed relock functionality
- Minimal power draw
- Optional internal micro-switch for latch status
- Simple mechanical over-ride



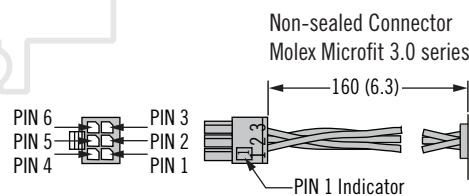
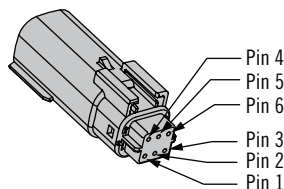
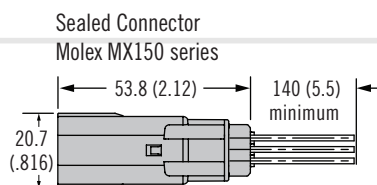
Other options available. For complete details on variety, part numbers, installation and specification, go to



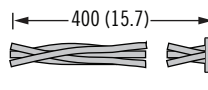
www.southco.com/R4-EM



Latch Wiring Connections



No Connector



Part Number Selection

R4 - EM - T B A - 1 S C - P M

T Trigger Style

- 5 Auto re-lock, side trigger, with kick-out spring
- 7 Delayed re-lock, side trigger, with light spring
- R5 Auto re-lock, rear trigger, with kick-out spring
- R7 Delayed re-lock, rear trigger, with light spring

B Base Mounting Style

- 1 1/4-20 thread
- 2 M6 thread
- 3 Ø 7.0 (.27) thru hole

A Alternate Configurations

- None Standard configuration
- 2 Strong (kick out) cam spring (delayed relock)
- 3 High strength cam (steel cam only) **M** = none only
- 4 High strength cam with strong (kick out) cam spring (delayed relock, steel cam only) **M** = none only

Dimensions in millimeters (inch) unless otherwise stated

M Material Options

- None Steel, zinc-nickel plated
- B Stainless steel, passivated
- A** = none or 2

P Packaging Options

- None Individually packaged
- 1 Bulk packaged

C Connector Options

- 1 Non-sealed connector
- 2 No connector (stripped and tinned)
- 3 Sealed connector

S Switch Options

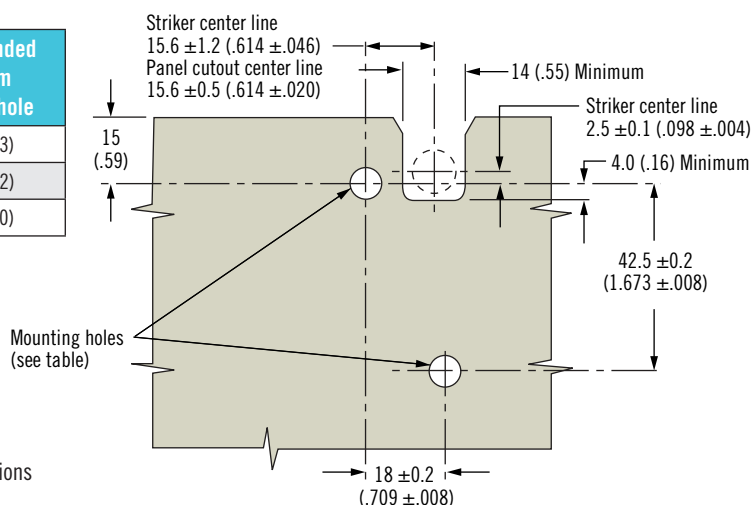
- 3 No switch
- 6 Internal latch status switch

southco
CONNECT · CREATE · INNOVATE

Installation

Panel Preparation

Base Mounting Style	Recommended minimum mounting hole
1/4-20 thread	Ø 7.2 (.283)
M6 thread	Ø 6.9 (.272)
Thru hole	Ø 7.6 (.300)



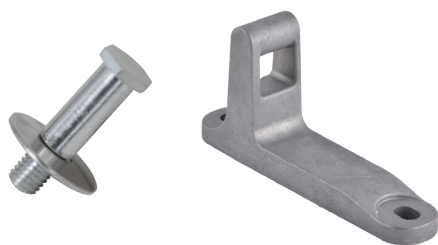
Operation

See page 34 for operating instructions

Accessories

Striker Bolt or Cast Striker

See page 35



Cable Mounting Kit

See page 35



Material & Finish

Mechanism

Housing, Cam, Trigger, Pins: Zinc

nickel plated steel or stainless steel

Springs: 300 Series stainless steel

Electronic Actuator

Housing: PC/ABS

Bellows, Wire seal: Silicone

Perimeter Seal: Buna

Cams: Acetal

Grommet: TPE

Electrical Specifications

Recommended Operating Voltage:

12 to 24 Volt DC

Typical Operating Current (average at no load): Less than 600mA at 12 VDC

Input Signal Current Draw: 25mA

Maximum at 24 VDC

Micro-switch Rating: 3A Maximum at 12VDC

Wire Color Code / Connector Pin Assignment:

PIN 1: Brown: Ground (-)

PIN 2: Red: Power 12 to 24 Volts DC

PIN 3: Orange: Control Signal 12 to 24 Volts DC

PIN 4: Black: Microswitch Common

PIN 5: Blue: Microswitch N.O.

Contact

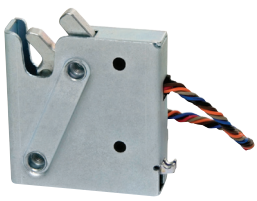
PIN 6: Grey: Microswitch N.C.

Contact

Other options available. For complete details on variety, part numbers, installation and specification, go to



www.southco.com/R4-EM

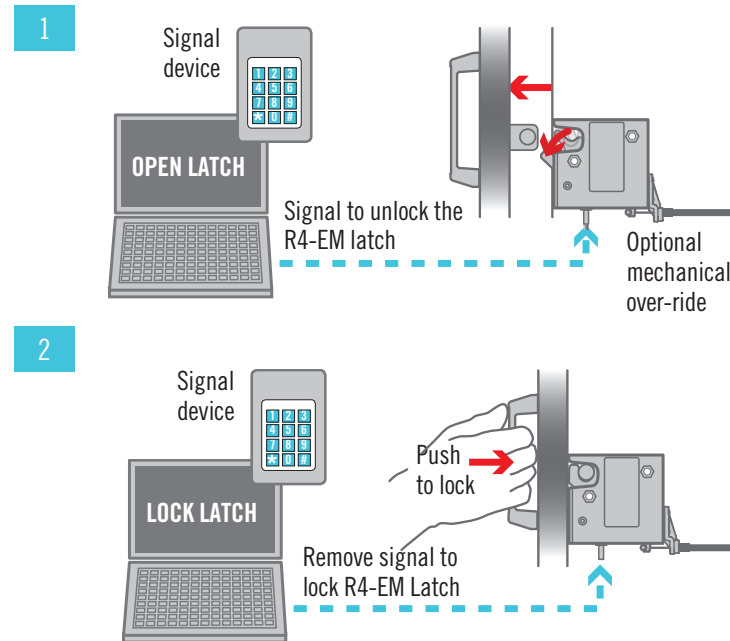


R4-EM Electronic Rotary Latch

Operating instructions

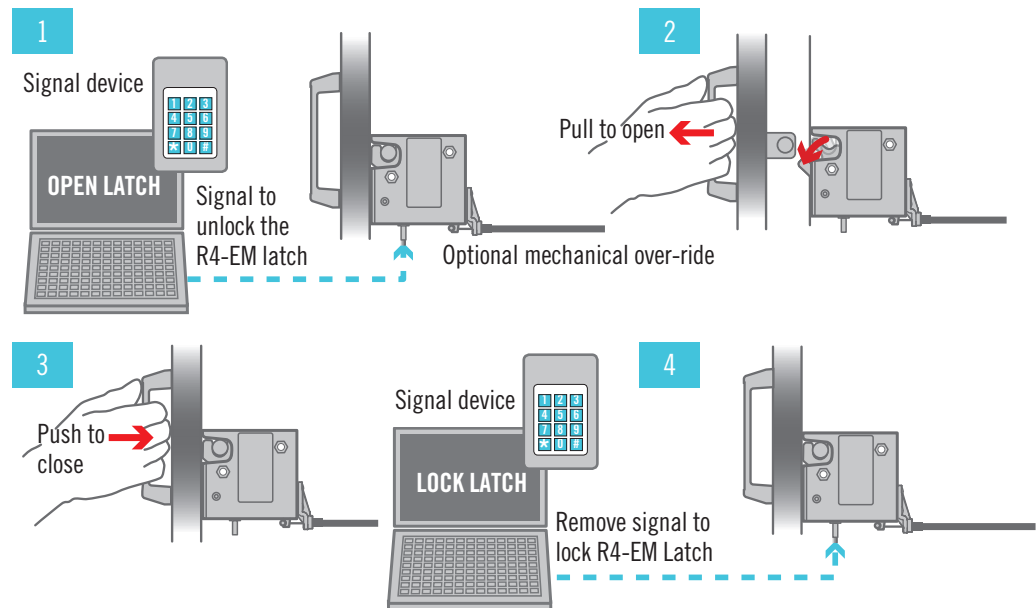
Operation - Auto relock

1. The signal unlocks the R4-EM latch and releases the spring loaded cam which rotates out to push a lightweight door open. The mechanism will cycle through unlatched then relatched state automatically, regardless of input signal on time.
2. Push door closed to engage striker after unlock time has expired. Striker will rotate cam to closed position.



Operation - Delayed relock

1. The signal unlocks the R4-EM latch leaving a biased closed door in the closed position. The unlock time is controlled by the access control device.
2. Manually pull door/striker free from R4-EM latch.
3. Manually push door closed. Striker will rotate cam to closed position, however latch will remain unlocked and can be re-opened as long as signal is present.
4. After accessing the door, the signal can be removed to re-lock the R4-EM. This can be done with the door in the open or closed position.



Other options available. For complete details on variety, part numbers, installation and specification, go to



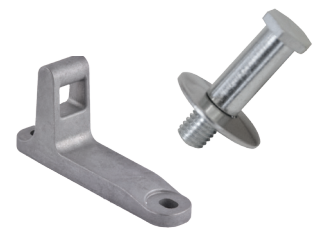
www.southco.com/R4-EM

Dimensions in millimeters (inch) unless otherwise stated

southco
CONNECT · CREATE · INNOVATE

R4-EM Electronic Rotary Latch

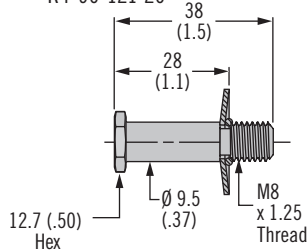
Strikers - Cable mounting kits



35

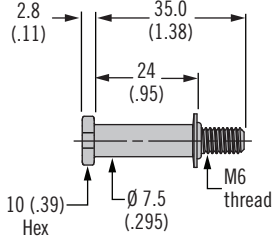
Striker Bolt - Large

Part number R4-90-121-10
R4-90-121-20



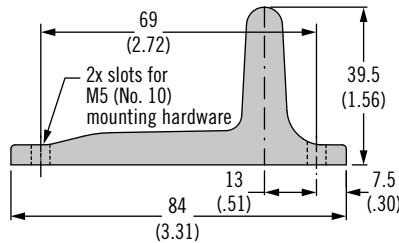
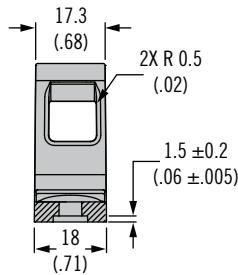
Striker Bolt - Small

Part number R4-90-511-20



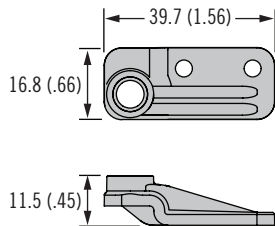
Cast Striker with Door Sensor Part number R4-90-804-10*

Cast Striker without Door Sensor Part number R4-90-800-10*

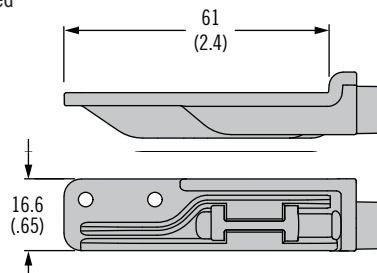


Cable Mounting Kit

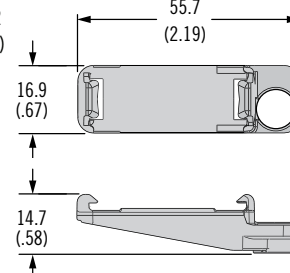
Part number R4-EM-52 – Rivets included
Part number R4-EM-72 – Screws included



Part number R4-EM-87 – Rivets included



Part number R4-EM-952



	Striker Bolt		Cast Striker		Cable Mounting Kit			
	R4-90-121-XX	R4-90-511-20	R4-90-800-10	R4-90-804-10	R4-EM-52	R4-EM-72	R4-EM-87	R4-EM-952
R4-EM-9	✓		✓	✓				✓
R4-EM-8	✓		✓	✓				
R4-EM-5 & 7	✓		✓		✓		✓	
R4-EM-4 & 6		✓				✓		
R4-EM-1 & 2	✓		✓		✓		✓	

Material and Finish

Striker bolts: Steel, zinc plated

Cast strikers: Zinc alloy

Cable mounting kits: Glass-filled nylon, black

***Note:** Latch and striker installation details can be found on the latch trade drawing at www.southco.com.

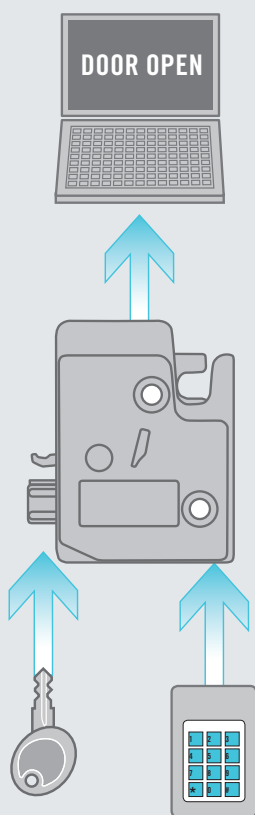


R4-EM 8 Series Electromechanical Rotary Lock

Door sensor option · Extended housing option

Electronic access without internal motor control

- Push-to-close, electronic release
- Auto relock functionality
- Minimal power draw
- Integrated connector
- Extended housing option for added security
- Optional door sensor
- Microswitch to detect latch status
- Mechanical over-ride with integrated cable bracket
- Efficient DC motor actuation
- Simple two-hole installation



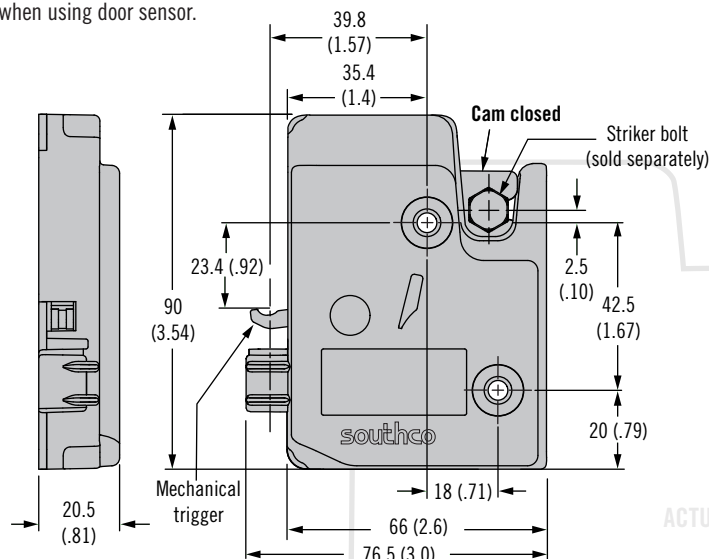
Other options available. For complete details on variety, part numbers, installation and specification, go to



www.southco.com/R4-EM

Extended Housing

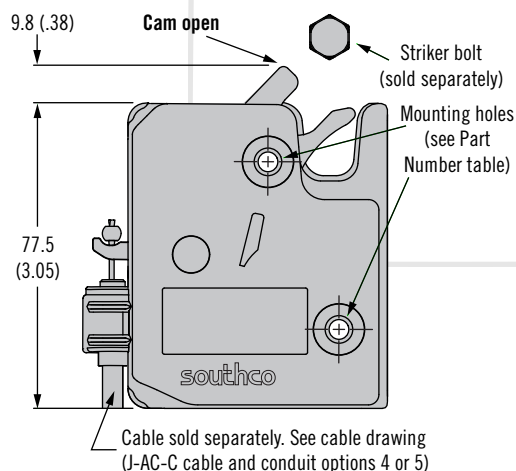
This version is required when using door sensor.



ACTUAL SIZE

Standard Housing

(Dimensions are the same as above, except as noted.)



Part Number Selection

R4 - EM - 8 B A - V S O - P

B Base Mounting Style

- 1 1/4-20 thread
- 2 M6 thread
- 3 Ø 7.0 (.27) thru hole

A Housing Configurations

- None Standard housing
- 6 Extended housing

V Voltage

- 2 24 volts
- 3 12 volts

S Integrated Door Sensor

- 3 No
- 4 Yes (Extended housing only)

P Packaging Options

- None Individually packaged
- 1 Bulk packaged

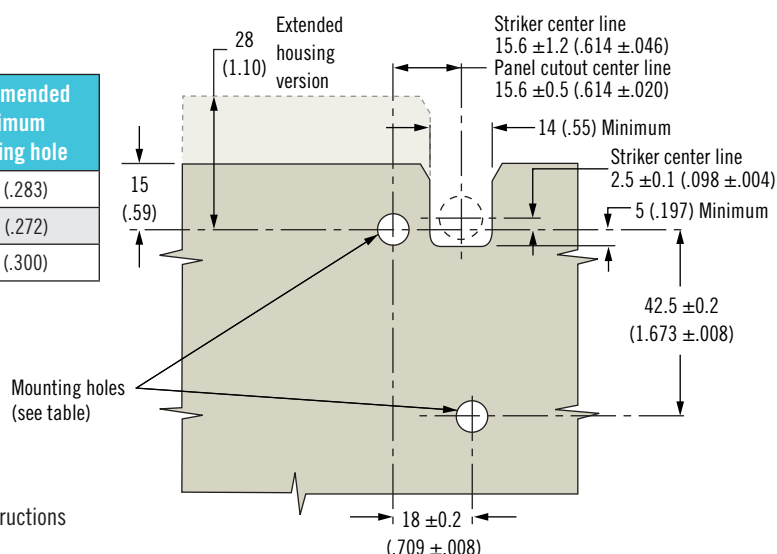
Dimensions in millimeters (inch) unless otherwise stated

southco
CONNECT · CREATE · INNOVATE

Installation

Panel Preparation

Base Mounting Style	Recommended minimum mounting hole
1/4-20 thread	Ø 7.2 (.283)
M6 thread	Ø 6.9 (.272)
Thru hole	Ø 7.6 (.300)



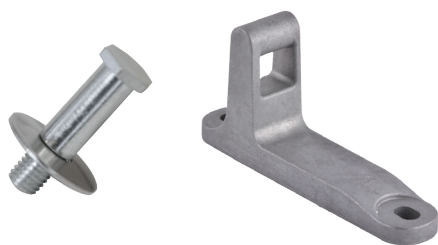
Operation

See page 34 for operating instructions

Accessories

Striker Bolt or Cast Striker

See page 35



Electronic Actuators

See page 42



Mechanical Actuators

See page 36



Cables

See page 272



Wiring/Junctions

See www.southco.com



Material & Finish

Top housing: Nylon

Gearbox cover: PC/ABS

Bottom housing, Pivot pins,

Screws: Steel, zinc plated

Cam, Trigger: Steel, sealed

Gears: Acetal

Pin, Springs: Stainless steel

Electrical Specifications

Recommended Operating Voltage:

12 V Models: 8 to 14 VDC

24 V Models: 21 to 26 VDC

Typical Operating Current :

12 V Models: Less than 200mA

24 V Models: Less than 100mA

Latch status switch: 1A Maximum

Latch Connector

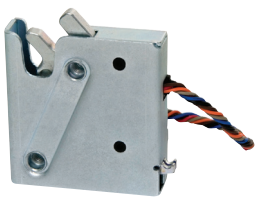
Pin Assignment

PIN 1: Power

PIN 2: Ground (-)

PIN 3: None

PIN 4: Latch status signal



R4-EM Electronic Rotary Latch

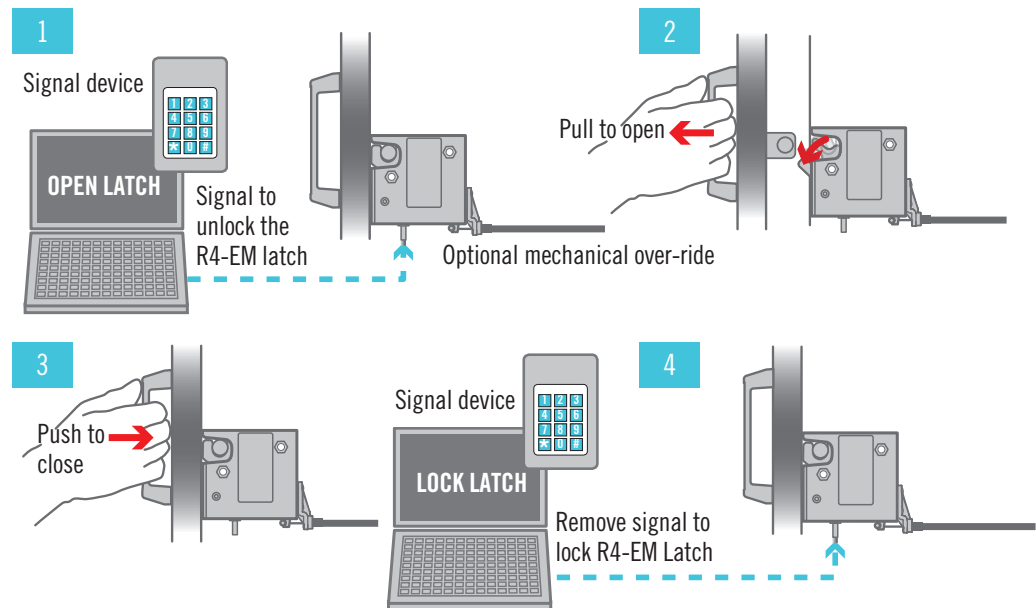
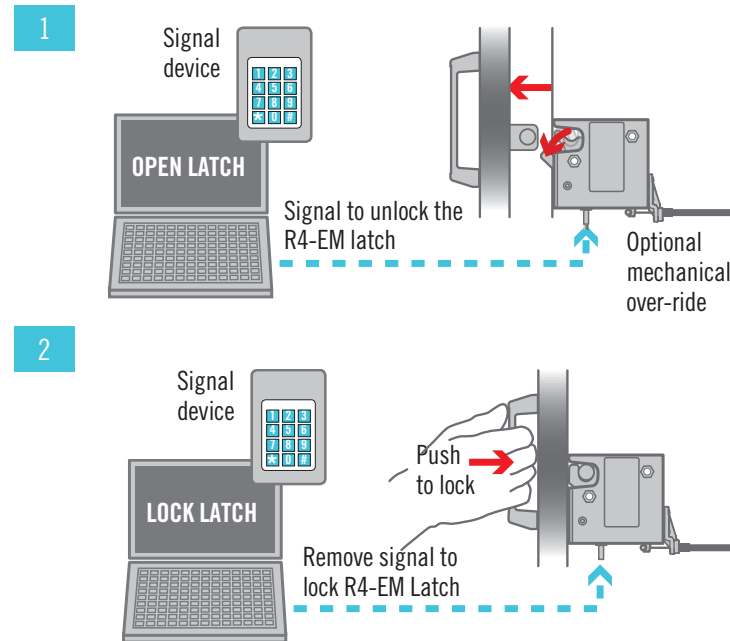
Operating instructions

Operation - Auto relock

1. The signal unlocks the R4-EM latch and releases the spring loaded cam which rotates out to push a lightweight door open. The mechanism will cycle through unlatched then relatched state automatically, regardless of input signal on time.
2. Push door closed to engage striker after unlock time has expired. Striker will rotate cam to closed position.

Operation - Delayed relock

1. The signal unlocks the R4-EM latch leaving a biased closed door in the closed position. The unlock time is controlled by the access control device.
2. Manually pull door/striker free from R4-EM latch.
3. Manually push door closed. Striker will rotate cam to closed position, however latch will remain unlocked and can be re-opened as long as signal is present.
4. After accessing the door, the signal can be removed to re-lock the R4-EM. This can be done with the door in the open or closed position.



Other options available. For complete details on variety, part numbers, installation and specification, go to



www.southco.com/R4-EM

Dimensions in millimeters (inch) unless otherwise stated

southco
CONNECT · CREATE · INNOVATE

R4-EM Electronic Rotary Latch

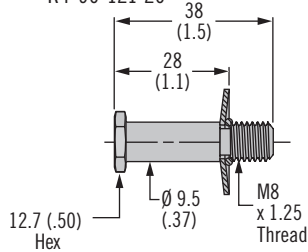
Strikers - Cable mounting kits



35

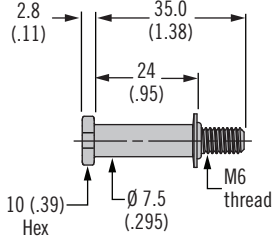
Striker Bolt - Large

Part number R4-90-121-10
R4-90-121-20



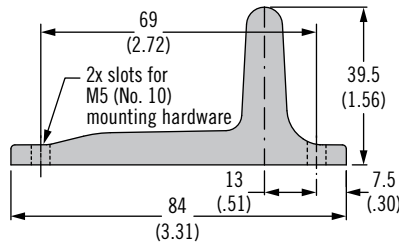
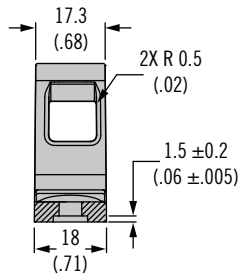
Striker Bolt - Small

Part number R4-90-511-20



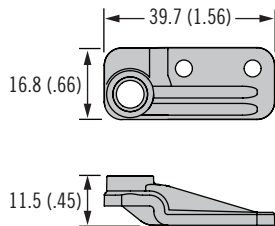
Cast Striker with Door Sensor Part number R4-90-804-10*

Cast Striker without Door Sensor Part number R4-90-800-10*

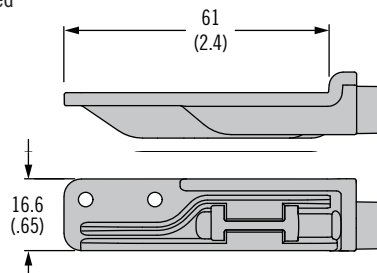


Cable Mounting Kit

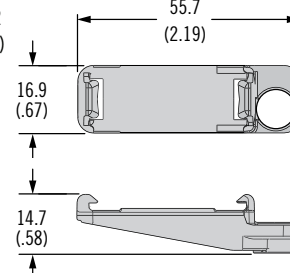
Part number R4-EM-52 – Rivets included
Part number R4-EM-72 – Screws included



Part number R4-EM-87 – Rivets included



Part number R4-EM-952



	Striker Bolt		Cast Striker		Cable Mounting Kit			
	R4-90-121-XX	R4-90-511-20	R4-90-800-10	R4-90-804-10	R4-EM-52	R4-EM-72	R4-EM-87	R4-EM-952
R4-EM-9	✓		✓	✓				✓
R4-EM-8	✓		✓	✓				
R4-EM-5 & 7	✓		✓		✓		✓	
R4-EM-4 & 6		✓				✓		
R4-EM-1 & 2	✓		✓		✓		✓	

Material and Finish

Striker bolts: Steel, zinc plated

Cast strikers: Zinc alloy

Cable mounting kits: Glass-filled nylon, black

***Note:** Latch and striker installation details can be found on the latch trade drawing at www.southco.com.

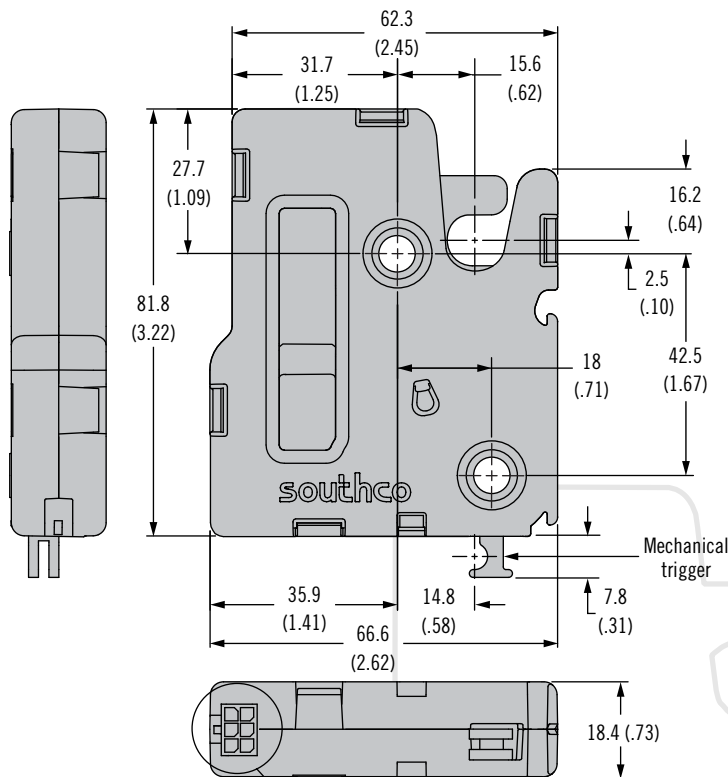
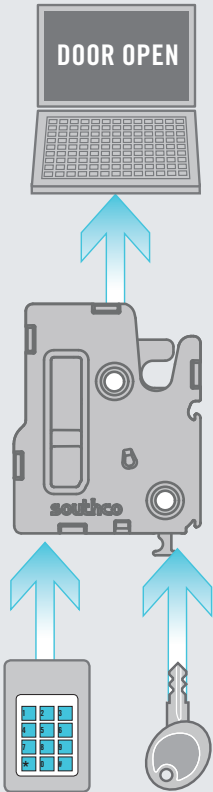


R4-EM 9 Series Electromechanical Rotary Lock

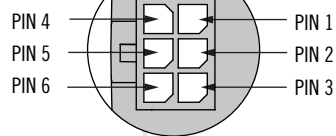
Concealed cam

Electronic access with internal motor control

- Push-to-close, electronic release
- High electromechanical release load
- Minimal power draw
- Integrated connector
- Extended housing for added security
- Door and Trigger Sensor
- Microswitch to detect latch status
- Mechanical over-ride with integrated cable bracket
- 12V to 24V operations
- Efficient DC gear motor actuation
- Detent mechanism for pull-open function
- Simple two-hole installation



Latch Wiring Connections



ACTUAL SIZE

Part Number Selection

R4 - EM - 9 **T** **B** **A** - 150 - **P**

T Trigger Styles

- A** Auto relock, rear trigger, with kick-out spring
- D** Delayed relock, rear trigger, with kick-out spring
- P** Delayed relock, rear trigger, pull to open

A Alternate Configurations

- None** Plastic housing
- 5** Metal Housing

B Base Mounting Style

- 1** 1/4 - 20 thread
- 2** M6 thread
- 3** Ø 7.0 (.27) thru hole

P Packaging Options

- None** Individually packaged
- 1** Bulk packaged

Other options available. For complete details on variety, part numbers, installation and specification, go to



www.southco.com/R4-EM

Dimensions in millimeters (inch) unless otherwise stated

southco
CONNECT · CREATE · INNOVATE

Installation

Panel Preparation

Base Mounting Style	Recommended minimum mounting hole
1/4-20 thread	Ø 7.2 (.283)
M6 thread	Ø 6.9 (.272)
Thru hole	Ø 7.6 (.300)

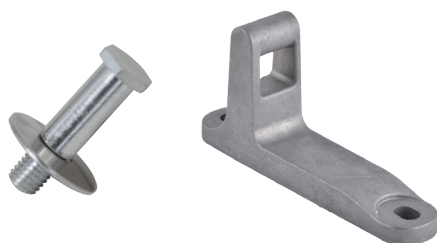
Operation

See page 34 for operating instructions

Accessories

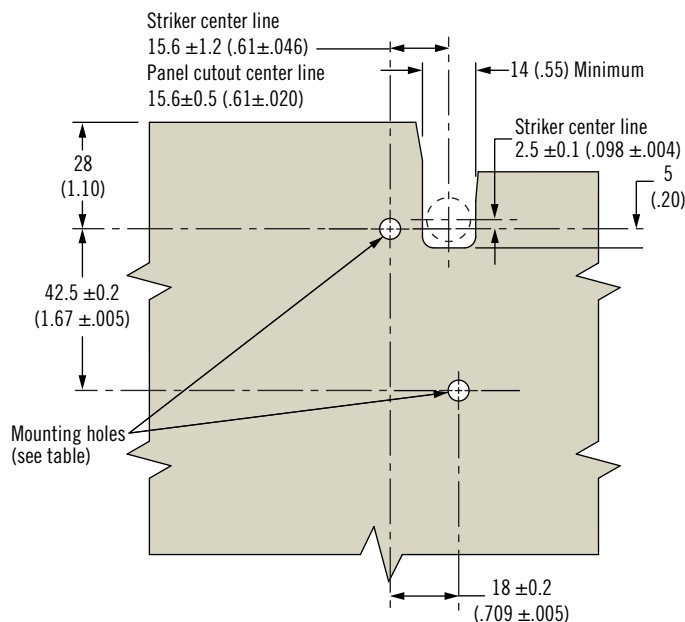
Striker Bolt or Cast Striker

See page 35



Cable Mounting Kit

See page 35



Material & Finish

Top Housing: PC/ABS or Aluminum

Bottom Housing: PC/ABS or Zinc,

Die Cast

Pivot Pins: Steel, zinc plated

Cam, Trigger: Steel, sealed

Springs: Stainless steel passivated

Trigger Interlock Lever: Glass-filled nylon

Bistable Spring Retainer: Zinc Alloy

Drive Cam: Acetal, black

Output Cam: Acetal, white

Electrical Specifications

Recommended Operating Voltage:

12 to 24 VDC

Typical Operating Current :

12 V Models: Less than 500mA

Latch Connector

Pin Assignment

PIN 1: Ground (-)

PIN 2: Power (+)

PIN 3: Control Signal

PIN 4: Latch Status

PIN 5: None

PIN 6: Door status

Electronic Actuators

See page 42



Mechanical Actuators

See page 36



Cables

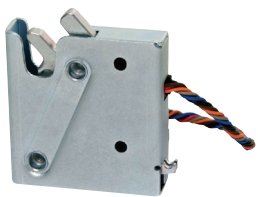
See page 272



Wiring/Junctions

See www.southco.com



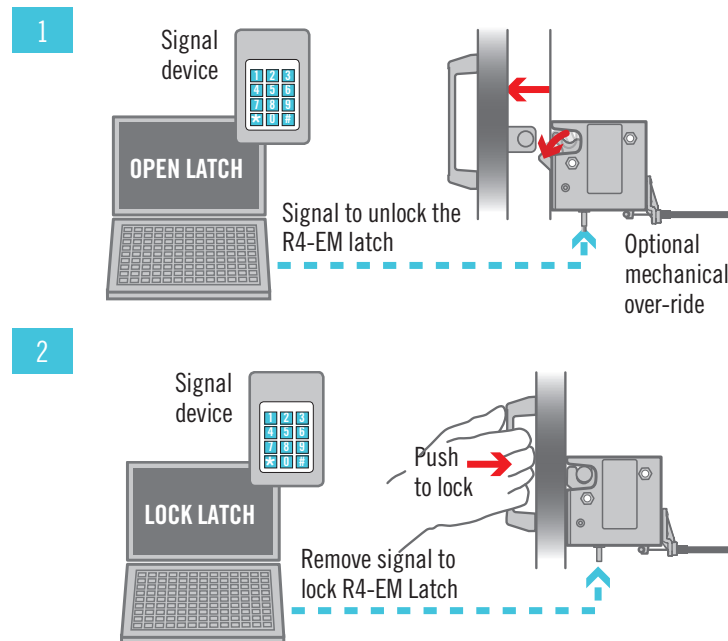


R4-EM Electronic Rotary Latch

Operating instructions

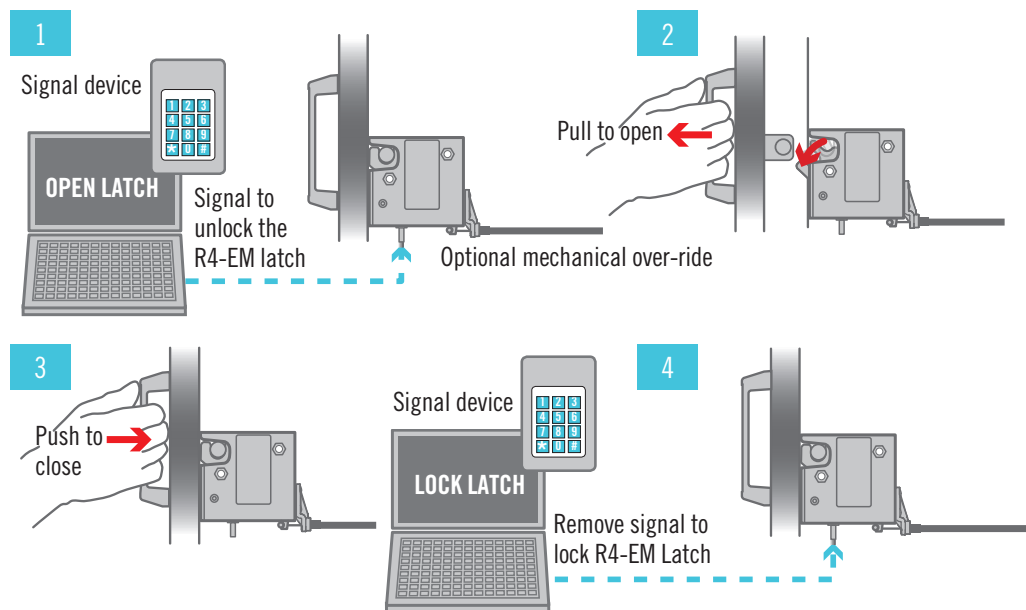
Operation - Auto relock

1. The signal unlocks the R4-EM latch and releases the spring loaded cam which rotates out to push a lightweight door open. The mechanism will cycle through unlatched then relatched state automatically, regardless of input signal on time.
2. Push door closed to engage striker after unlock time has expired. Striker will rotate cam to closed position.



Operation - Delayed relock

1. The signal unlocks the R4-EM latch leaving a biased closed door in the closed position. The unlock time is controlled by the access control device.
2. Manually pull door/striker free from R4-EM latch.
3. Manually push door closed. Striker will rotate cam to closed position, however latch will remain unlocked and can be re-opened as long as signal is present.
4. After accessing the door, the signal can be removed to re-lock the R4-EM. This can be done with the door in the open or closed position.



Other options available. For complete details on variety, part numbers, installation and specification, go to



www.southco.com/R4-EM

Dimensions in millimeters (inch) unless otherwise stated

southco
CONNECT · CREATE · INNOVATE

R4-EM Electronic Rotary Latch

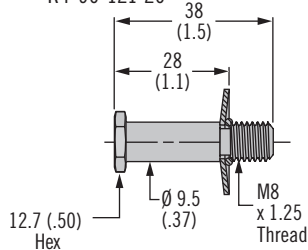
Strikers - Cable mounting kits



35

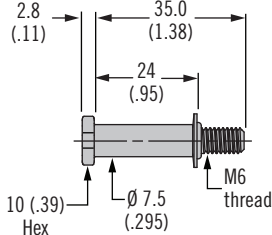
Striker Bolt - Large

Part number R4-90-121-10
R4-90-121-20



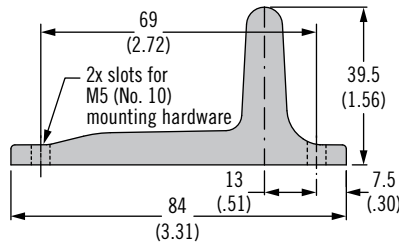
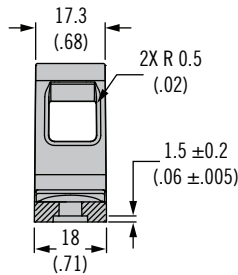
Striker Bolt - Small

Part number R4-90-511-20



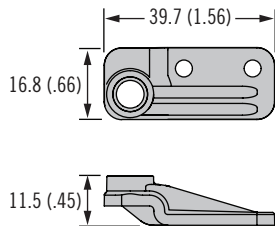
Cast Striker with Door Sensor Part number R4-90-804-10*

Cast Striker without Door Sensor Part number R4-90-800-10*

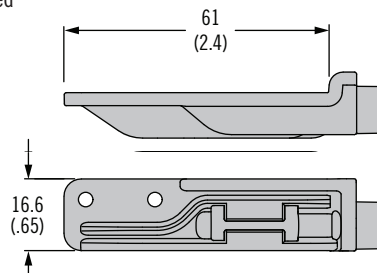


Cable Mounting Kit

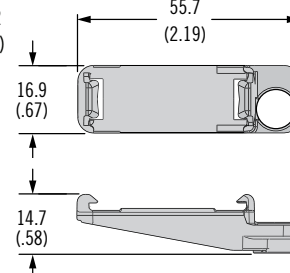
Part number R4-EM-52 – Rivets included
Part number R4-EM-72 – Screws included








Part number R4-EM-87 – Rivets included



Part number R4-EM-952



	Striker Bolt		Cast Striker		Cable Mounting Kit			
	R4-90-121-XX	R4-90-511-20	R4-90-800-10	R4-90-804-10	R4-EM-52	R4-EM-72	R4-EM-87	R4-EM-952
 R4-EM-9	✓		✓	✓				✓
 R4-EM-8	✓		✓	✓				
 R4-EM-5 & 7	✓		✓		✓		✓	
 R4-EM-4 & 6		✓				✓		
 R4-EM-1 & 2	✓		✓		✓		✓	

Material and Finish

Striker bolts: Steel, zinc plated

Cast strikers: Zinc alloy

Cable mounting kits: Glass-filled nylon, black

***Note:** Latch and striker installation details can be found on the latch trade drawing at www.southco.com.