



56 Spring-Loaded Plunger

Thread-in style - Miniature, Small and Large

- Simplified positioning of sliding components
- Quick-release hinge for removable door
- Fast installation and removal of components
- Designate access with color

Material and Finish

Stud: Steel, hardened, zinc plated, chromate plus sealer

Ferrule and Sleeve: Steel, zinc plated, chromate plus sealer

Spring: 300 series stainless steel passivated

Prism Knob: PC/ABS, UL94-V0 Rated

End cap: Steel, zinc plated, chromate, plus sealer

(Aluminum knob plungers only)

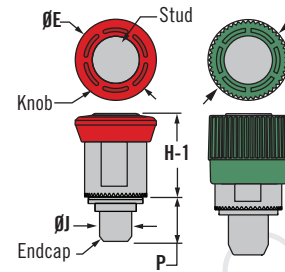
Detent washer: Steel, zinc plated (Hold-open only)

Part Number

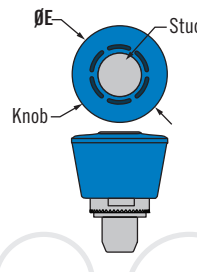
See table

Thread-in Style

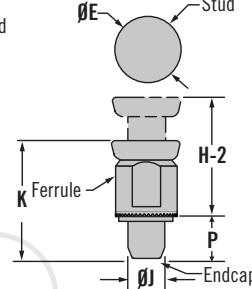
Prism - Miniature and Small



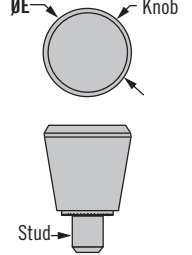
Prism - Large



Bright Steel Knob



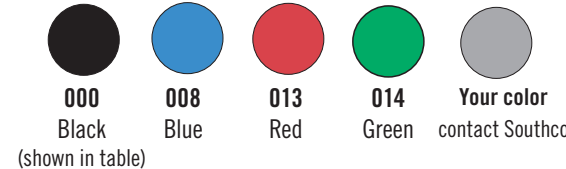
Bright Aluminum Knob



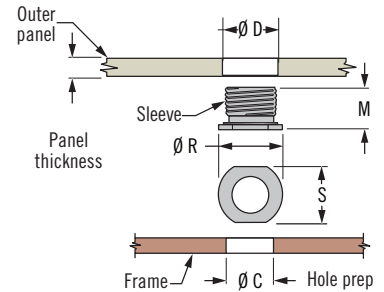
Specifying Prism Color

To indicate color, change the last three digits of the part number.

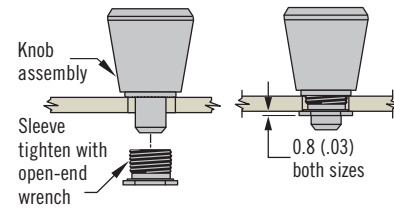
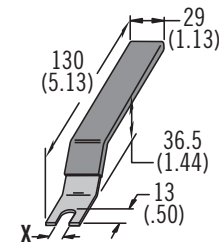
Example: 56-130-000, black; 56-130-013, red



ACTUAL SIZE



Installation tool



Size	X (Tool)	Tool Part Number
Mini	7.1 (.28)	56-0-22041-03
Small	9.5 (.38)	56-0-22041-04
Large		

Outer Panel		P	Size	Knob Style	Part Number		H-1	H-2	Ø E	K	Ø J	Ø C	Ø D	M	Ø R	S
Min.	Max.				Hold-Open	Without										
0.8 (.031)	1.5 (.06)	4.4 (.17)	Mini	Bright	—	56-30-15	9.2 (.36)	12.9 (.51)	8.5 (.335)	13.6 (.54)	4.29 (.169) MAX	4.3 +0.08/-0.0 (.17 +.003 -.000)	7.14 ±0.08 (.281 ±.003)	5.1 (.20)	9 (.35)	7 (.28)
				Prism	—	56-130-000	9.9 (.39)	13.6 (.54)	9 (.354)	14.3 (.56)						
				4C-Prism	—	56-330-000	9.9 (.39)	13.6 (.54)	10 (.354)	14.3 (.56)						
0.8 (.031)	3.2 (.13)	6.9 (.27)	Small	Bright	—	56-80-15	12.2 (.48)	20.4 (.80)	11.5 (.45)	20.3 (.80)	6.33 (.249)	6.35 + 0.08/-0.0 (.250 +.003/.000)	9.12 ±0.08 (.359 ±.003)	7.1 (.28)	11.1 (.44)	9.4 (.37)
				Prism	—	56-180-000	13 (.51)	21.1 (.83)	13.3 (.52)	21 (.83)						
				4C-Prism	—	56-380-000	13 (.51)	21.1 (.83)	13 (.51)	21 (.83)						
			Large	Prism	—	56-280-000	14.1 (.56)	21.1 (.83)	17 (.67)	21 (.83)						
0.64 (.025)	1.5 (.06)	6.4 (.17)	Small	Aluminum	56-10-301-20	56-99-196-20	13.4 (.53)	18.4 (.72)	13.5 (.53)	19.8 (.78)	4.7 (.183)	4.78 +0.08/-0.03 (.17 +.003 -.000)	7.14 ±0.08 (.281 ±.003)	5.6 (.20)	9 (.35)	7 (.28)
0.8 (.031)	3.2 (.13)	7.9 (.31)	Large	Aluminum	56-10-401-20	56-99-197-20	18.3 (.72)	24.6 (.97)	17.5 (.69)	26.2 (1.03)	6.2 (.245)	6.35 + 0.08/-0.08 (.250 +.003/.000)	9.12 ±0.08 (.359 ±.003)	7.1 (.28)	11.1 (.44)	9.4 (.37)

Other options available. For complete details on variety, part numbers, installation and specification, go to



www.southco.com/56

Dimensions in millimeters (inch) unless otherwise stated

